

NATIONAL TRIBAL BROADBAND SUMMIT



SEPTEMBER 23 – 24, 2019 | WASHINGTON, DC



TARA SWEENEY

ASSISTANT SECRETARY – INDIAN AFFAIRS



DOUG HOELSCHER

DIRECTOR

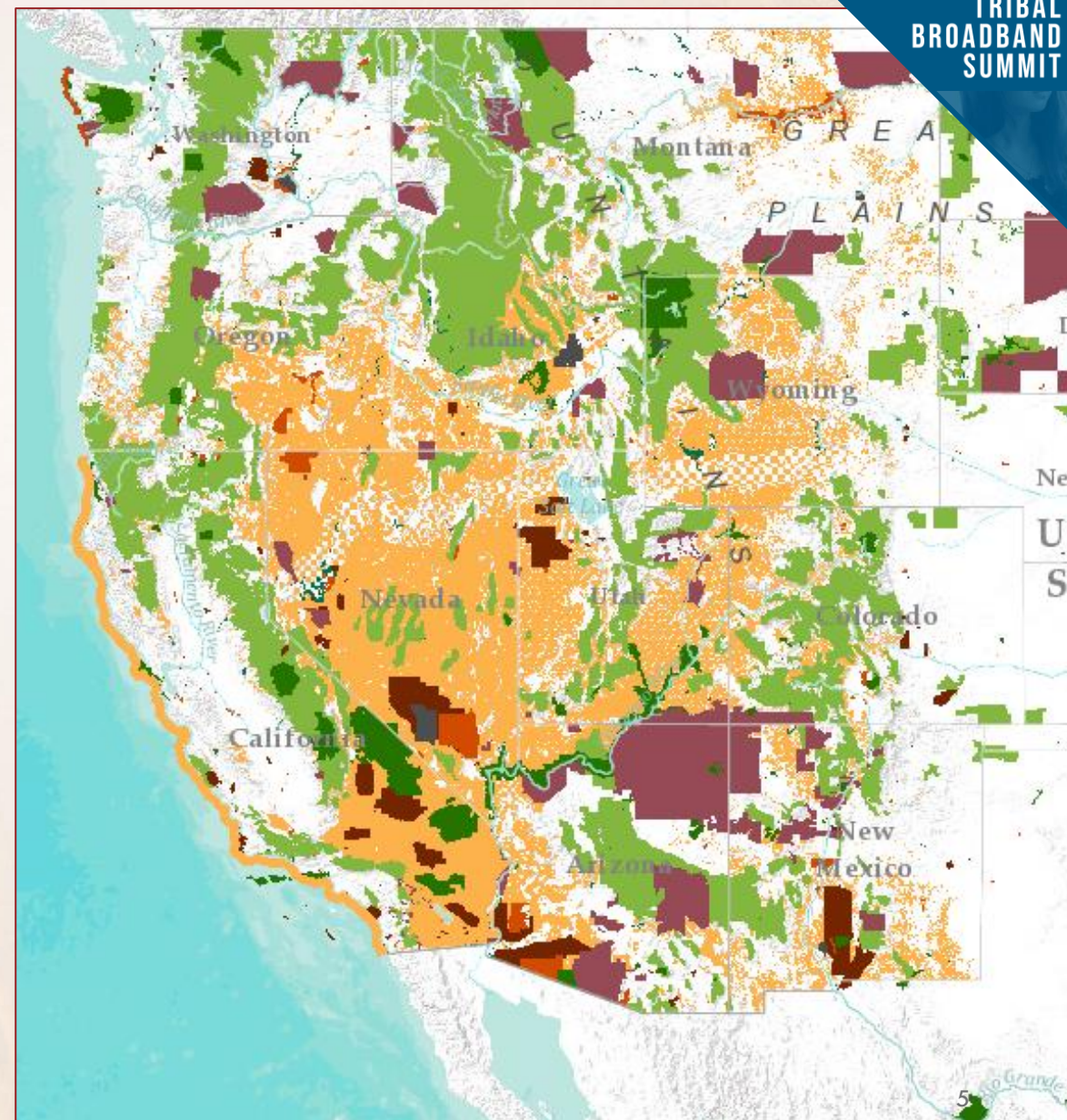
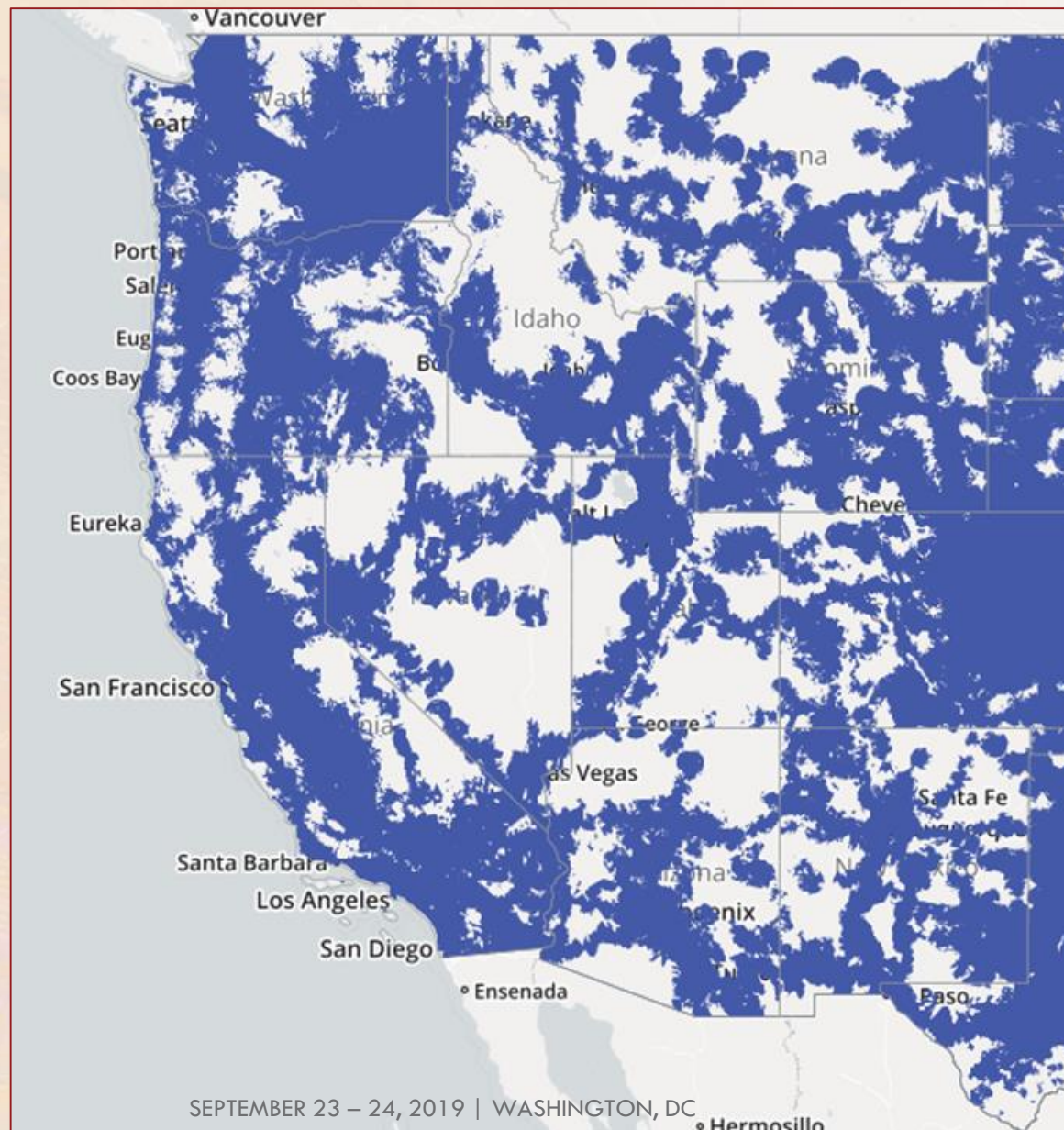
WHITE HOUSE OFFICE OF INTERGOVERNMENTAL AFFAIRS

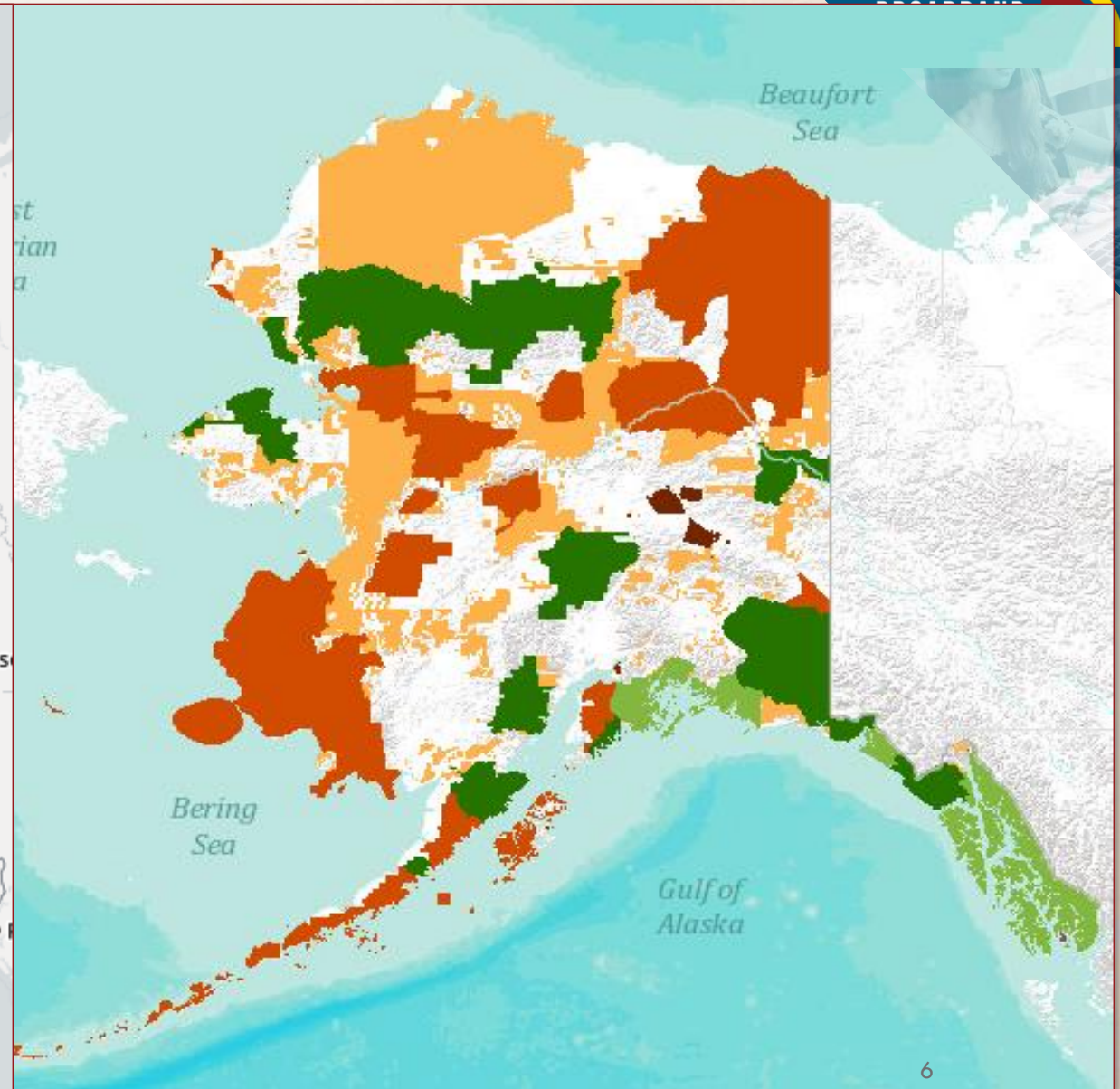
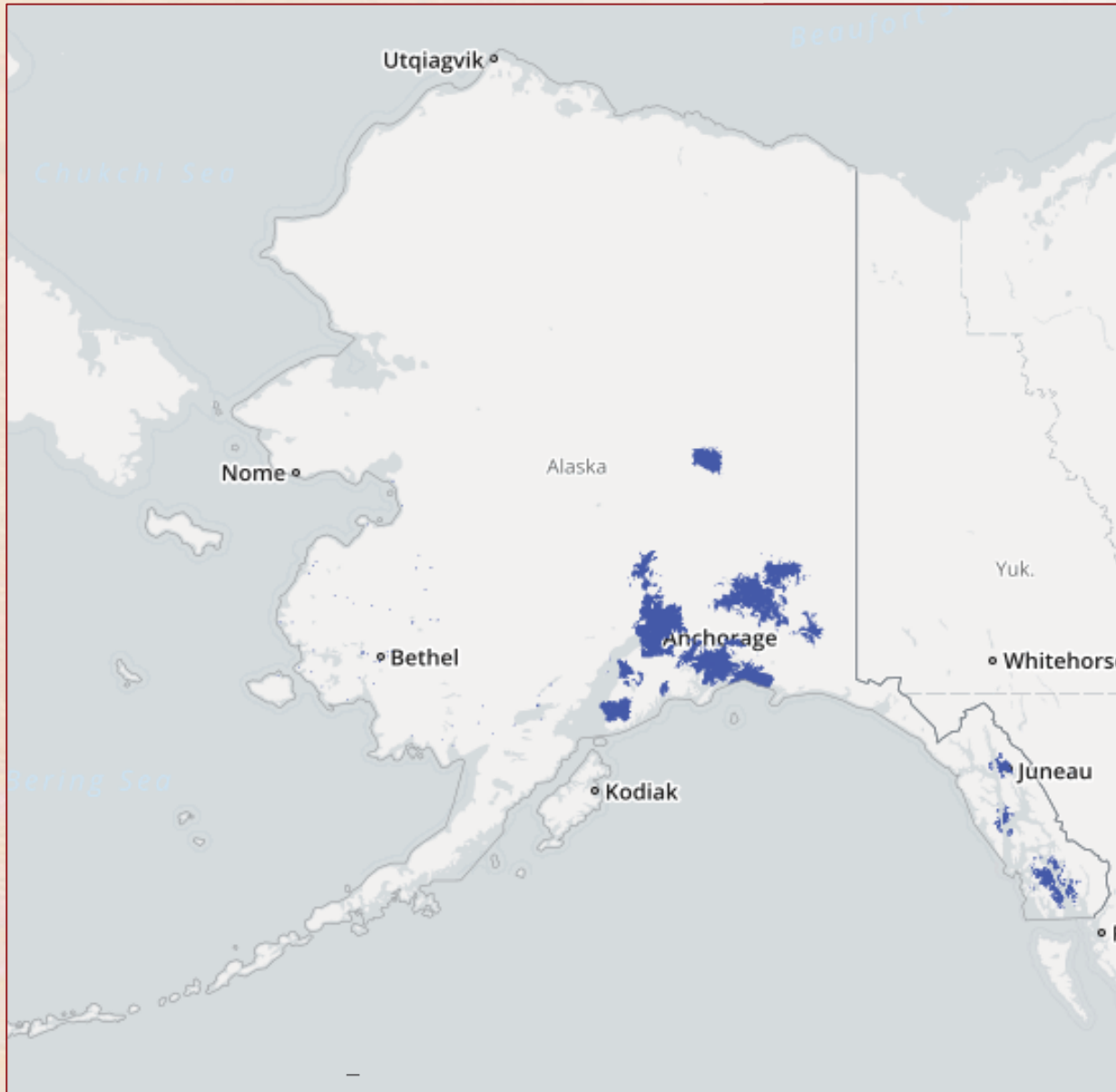


KATE MACGREGOR

DEPUTY CHIEF OF STAFF

EXERCISING THE AUTHORITY OF THE
DEPUTY SECRETARY OF THE INTERIOR







Telecommunication Infrastructure Sites and Cases

Washington DC Office of Energy, Minerals, and Realty

<https://www.doi.gov/broadband>



Filter for Telecommunication Sites

▼ ☒ Telecommunication Sites ☐

State is

- empty -

Comm Site Type is

- empty -

▼ ☒ Telecommunication Areas (Bureau of Land Management) ☐

State is

- empty -

Comm Site Type is

Info Summary

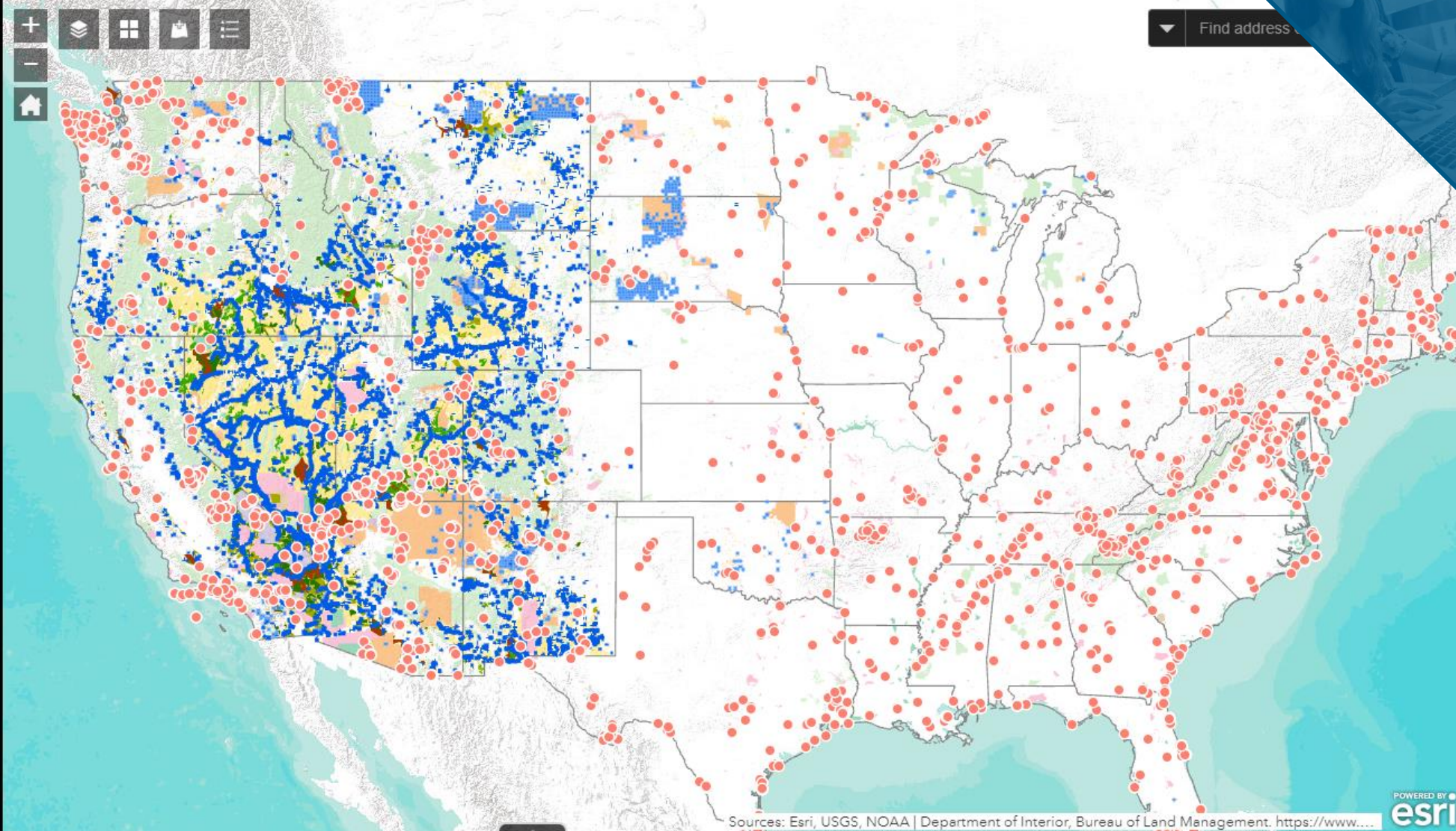
Telecommunication Sites 5,413

Telecommunication Areas (Bureau of Land Management) 10,245

Wilderness and Wilderness Study Areas 1,522

National Monument Areas 51

Areas Of Critical Environmental Concern 1,208



Sources: Esri, USGS, NOAA | Department of Interior, Bureau of Land Management. <https://www.doi.gov/broadband>



AJIT PAI

CHAIRMAN

FEDERAL COMMUNICATIONS COMMISSION



NANCY WEISS

GENERAL COUNCIL

INSTITUTE OF MUSEUM AND LIBRARY SERVICES



JENNIE LICHTER

DEPUTY DIRECTOR

DOMESTIC POLICY COUNCIL



LIGHTNING TALKS

IMPACT OF BROADBAND ON NATIVE COMMUNITIES



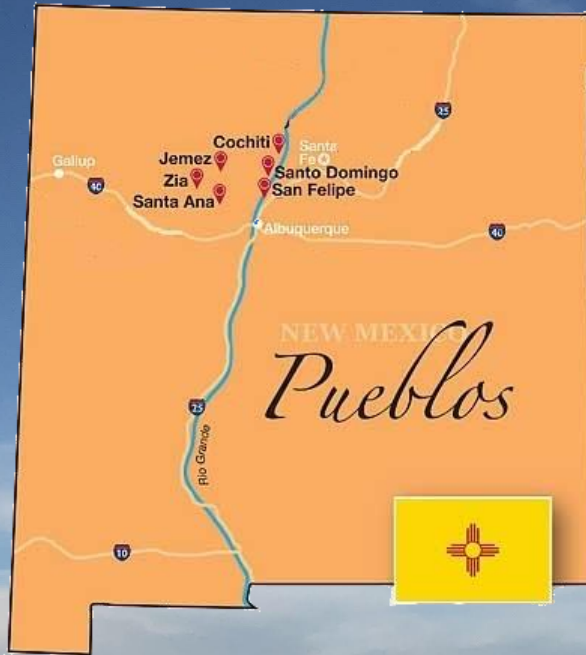
TYLER SCRIBNER

POLICY ANALYST, NATIONAL CONGRESS OF AMERICAN INDIANS



KIMBALL SEKAQUAPTEWA

CHIEF TECHNOLOGY DIRECTOR, SANTA FE INDIAN SCHOOL



Jemez-Zia Pueblo Tribal Consortium

San Diego Riverside (NM Charter) • Walatowa High School (NM Charter)
Jemez Tribal Library • Zia Tribal Library



Middle Rio Grande Pueblo Tribal Consortium

Pueblo de Cochiti Tribal Library • Santo Domingo Tribal Library
San Felipe Pueblo Community Library • Santa Ana Pueblo Community Library

Beginnings

MRG CONSORTIUM MEMBERS		BEFORE		
School/Library Name	Connection Type/Qty	Current Speed (Mbps)	Monthly Recurring Cost (MRC)	Current Cost/Mbps
Santa Ana Community Library	Microwave	70	\$960	\$13.71
San Felipe Pueblo Community Library	2 x T1s	3	\$700	\$233.33
Santo Domingo Tribal Library	Satellite	3	\$116	\$38.67
Pueblo de Cochiti Tribal Library	LTE Mi Fi	10	\$1,400	\$140.00

**Tribal Libraries:
Critical
Community
Computing
Centers**

JEMEZ / ZIA CONSORTIUM MEMBERS		BEFORE		
School/Library Name	Connection Type/Qty	Current Speed (Mbps)	Monthly Recurring Cost (MRC)	Current Cost/Mbps
Jemez Pueblo Community Library	1x DSL	12	\$95	\$7.92
Jemez Day School	6x T1s	9	\$2,549	\$283.24
San Diego Riverside Charter School	2x DSL	12	\$1,200	\$100.00
Walatowa Charter High School	3x T1s	4.5	\$550	\$122.22
T'siya Pueblo Elementary School	1x T1	1.5	\$303	\$202.00
Pueblo of Zia Tribal Library	Ethernet	10	\$0	\$0.00

**Very Underserved
Little IT
Support**

**Barely
Using
E-rate**

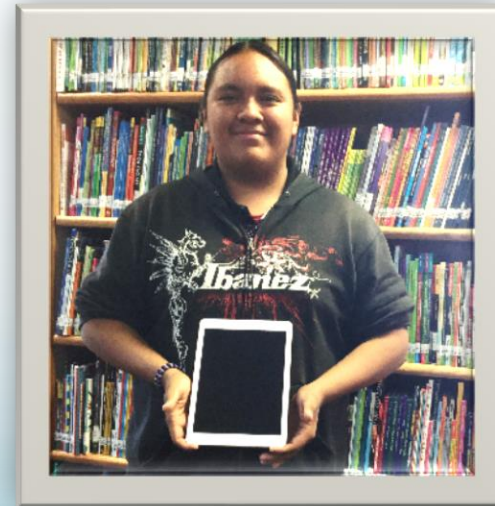
Broadband in Tribal Libraries

Critical community infrastructure for computer services

- K-12: After school homework and live tutoring often using cloud apps, Kahn Academy
- Adults: On-line classes for college degrees, GED, basic literacy, certificates, i.e. food handlers
- On-line college applications, scholarships, FAFSA
- Video-Conferencing for language and/or culture
- Website Portals for on-line banking, bill pay
- Required on-line testing for NM Drivers License, Food Handlers Classes, Permits and Safety course for NM Game and Fish
- Social services for senior, disabled and veterans e.g. Social Security, Medicare, Veteran benefits
- Filing federal and state taxes, managing refunds
- Job searches, applications, resume writing, unemployment claims
- Public Internet access for personal devices, including parking lot Wi-Fi
- Center for connectivity during emergencies



SD Youth ages 18-20 update their resumes and apply for federal and tribal financial aid for college

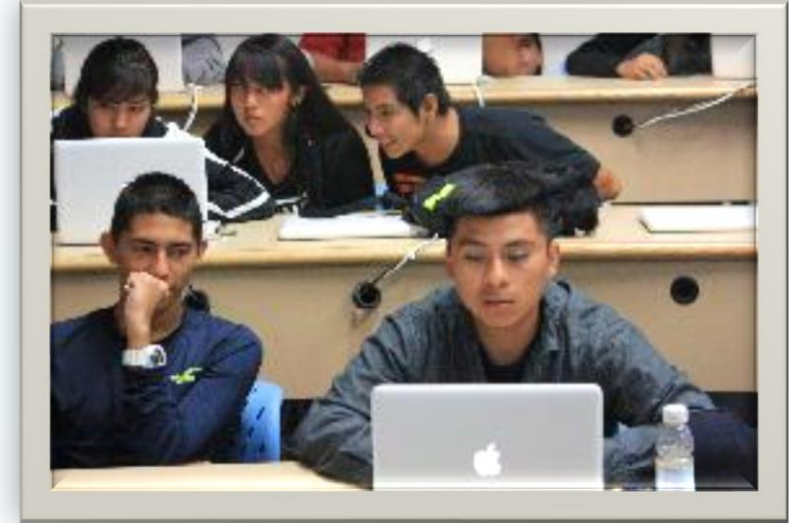


Winner of a logo contest receives an iPad that cannot be used in the pueblo due to connectivity issues

Broadband in Schools

Conduit of teaching, learning, and school operations

- Using Internet content in teaching and learning, *e.g.*, Kahn Academy, digital textbooks, YouTube
- Communication and collaboration with students and teachers, *e.g.*, Google Classroom
- Mobile devices provide new opportunities but require high-speed Internet, *e.g.*, iPads, Kindles, and Chromebooks
- NASIS Parent Portal to check assignments and grades (BIE)
- Mandatory online testing, *e.g.*, PARCC, MAPS
- Distance learning, *e.g.*, college dual enrollment
- Videoconferencing back to Tribes in native language classes
- Virtual field trips across the globe
- Administration: Online human resources, accounting, phone, safety, and e-mail systems



Santa Fe Indian School students use computers in all classes in all grades as part of instruction



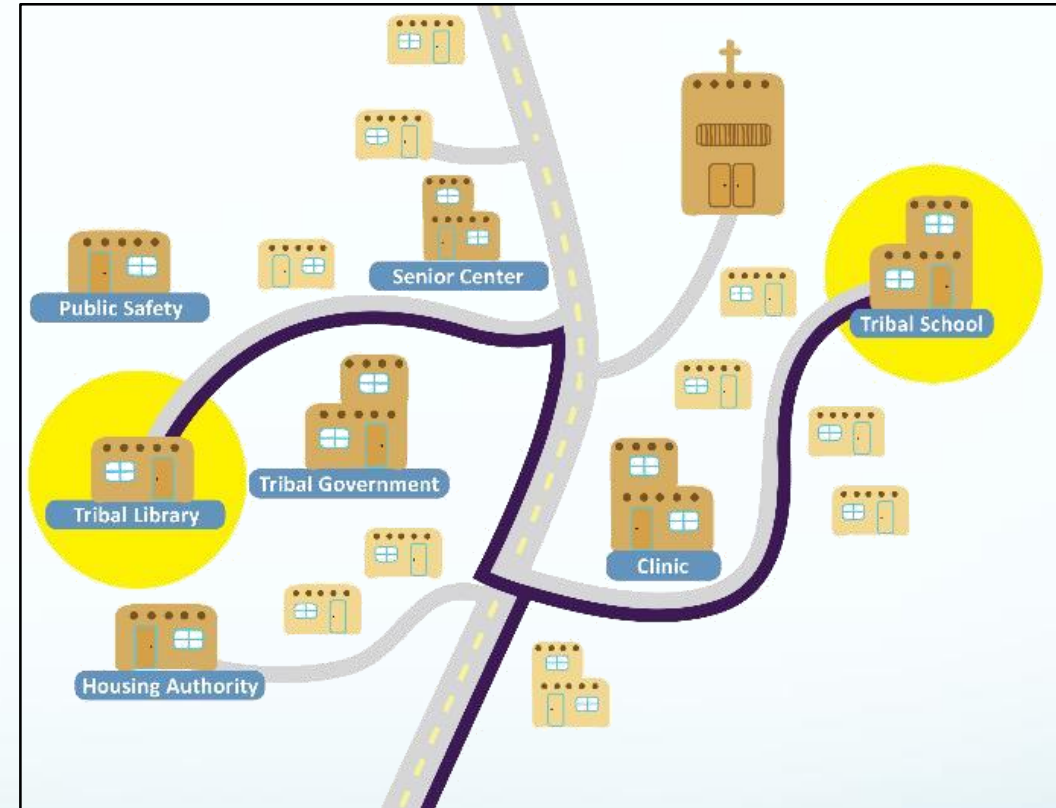
Funding Opportunity

FCC USF E-rate Program

- K-12 Schools and libraries
- Up to 90% discount off Internet bills
- New: Discounts on fiber construction
- Limited time: Additional 5% discount if match is from Tribal, state, federal source

Opportunity

- Bring Broadband – high-speed Internet – to schools and libraries
- Fiber optic benefits: Can be easily increased to meet future needs, symmetrical uploads and downloads
- Tribal ownership

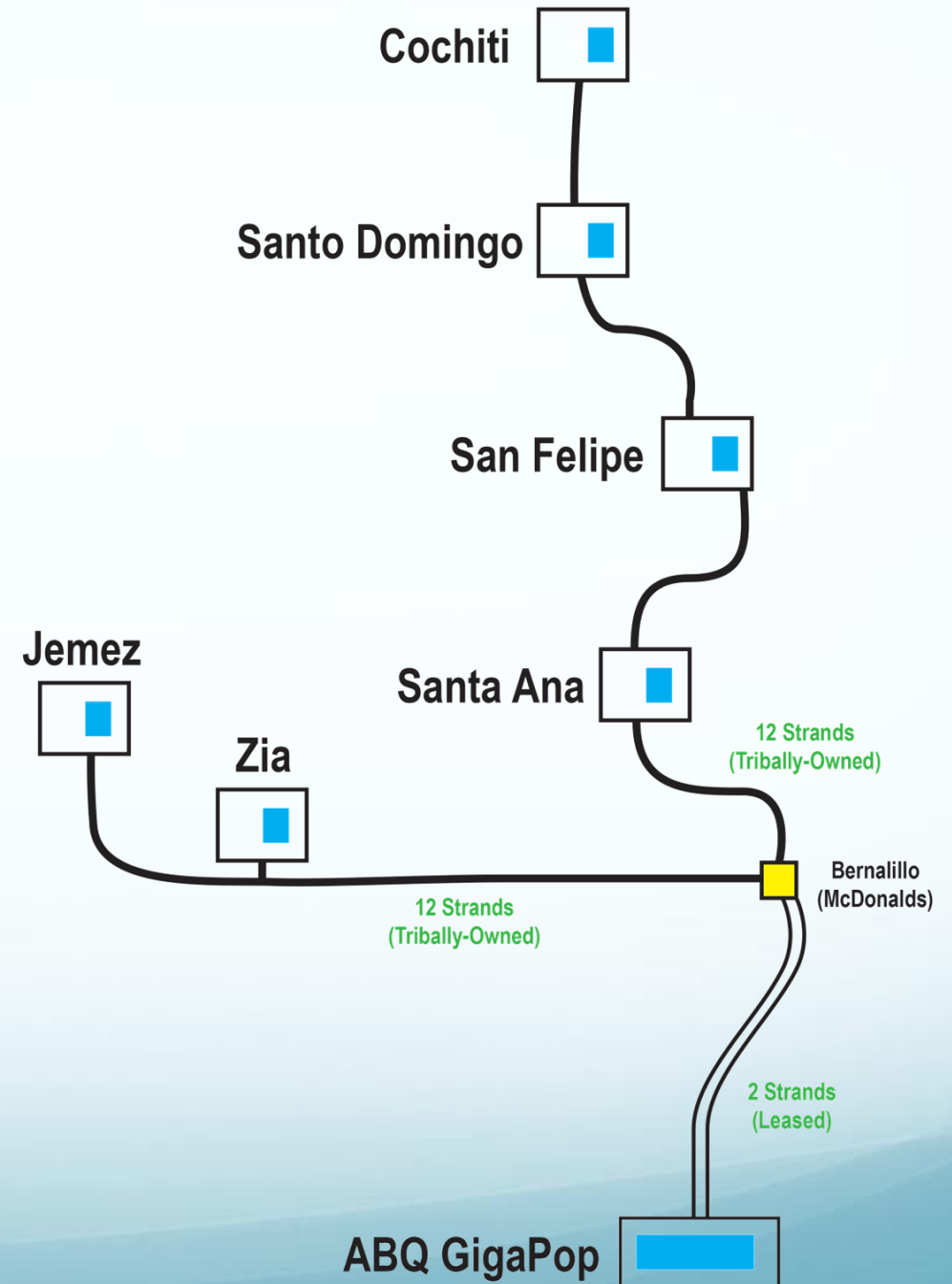


**Fiber Optic Backbone to
the schools and libraries**

Our Approach

Tribal Consortia

- Network Design – Aimed for 505 Marquette
- Aggregated Demand
- Geography-based Approach Tribal Schools and Libraries
Tribal Libraries Partner
- Critical partnerships: Santa Fe Indian School, AMERIND Risk, University of New Mexico
- New Mexico Broadband Deficiencies Correction Program – NMPED, NMDoIT, PFSA, E-rate Central, Education Superhighway
- Industry partners: Layer 1 Construction (Kelly Cable of NM) and Carrier Electronics (Juniper)



Middle Rio Grande Pueblo Tribal Consortium Jemez-Zia Pueblo Tribal Consortium

Fiber Optic Backbone

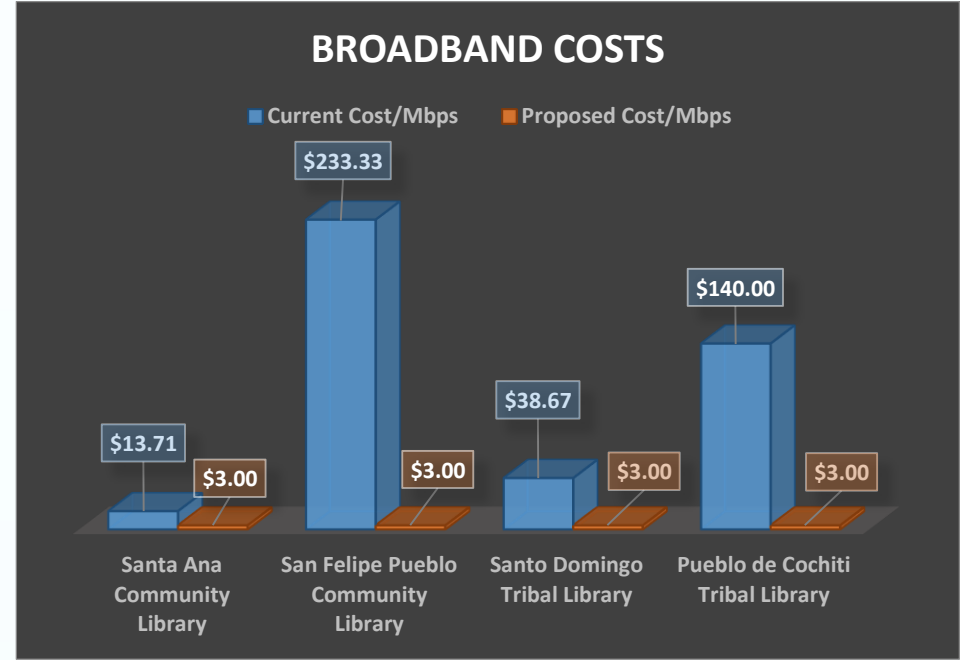
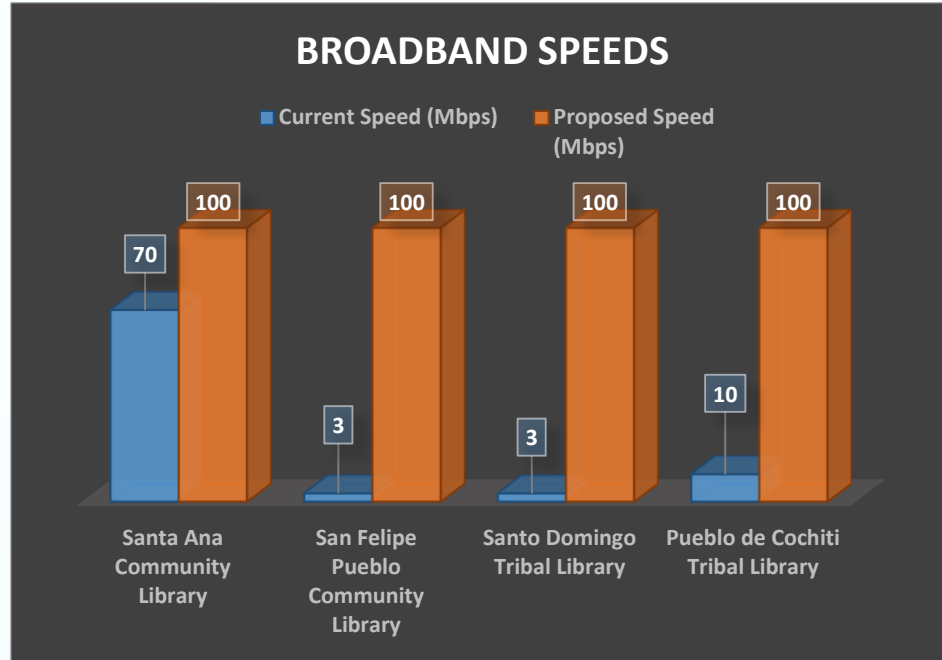
- Two Networks
- Connects 2 Schools and 6 Libraries
- Intended to also connect 3 BIE – operated Schools
- 12 Strand 60-mile network from Albuquerque to Cochiti
- Leased Dark Fiber
- Utilizes DWDM equipment
- ~ \$4 million asset

Benefits

- Coming from within the tribes
- Tribally-Owned and Operated



Before / After



MRG CONSORTIUM MEMBERS		BEFORE					AFTER				
School/Library Name		Connection Type/Qty	Old Speed (Mbps)	Monthly Recurring Cost (MRC)	Old Cost/Mbps	Old Cost/Mbps w/E Rate	Connection Type/Qty	New Speed (Mbps)	Monthly Recurring Cost (MRC)	New Cost/Mbps	New Cost/Mbps w/E Rate
Santa Ana Community Library		Microwave	70	\$960	\$13.71	N/A	Fiber	100	\$300	\$3	30 cents
San Felipe Pueblo Community Library		2 x T1s	3	\$700	\$233.33	\$23.33	Fiber	100	\$300	\$3	30 cents
Santo Domingo Tribal Library		Satellite	3	\$116	\$38.67	\$3.87	Fiber	100	\$300	\$3	30 cents
Pueblo de Cochiti Tribal Library		LTE Mi Fi	10	\$1,400	\$140.00	\$14.00	Fiber	100	\$300	\$3	30 cents

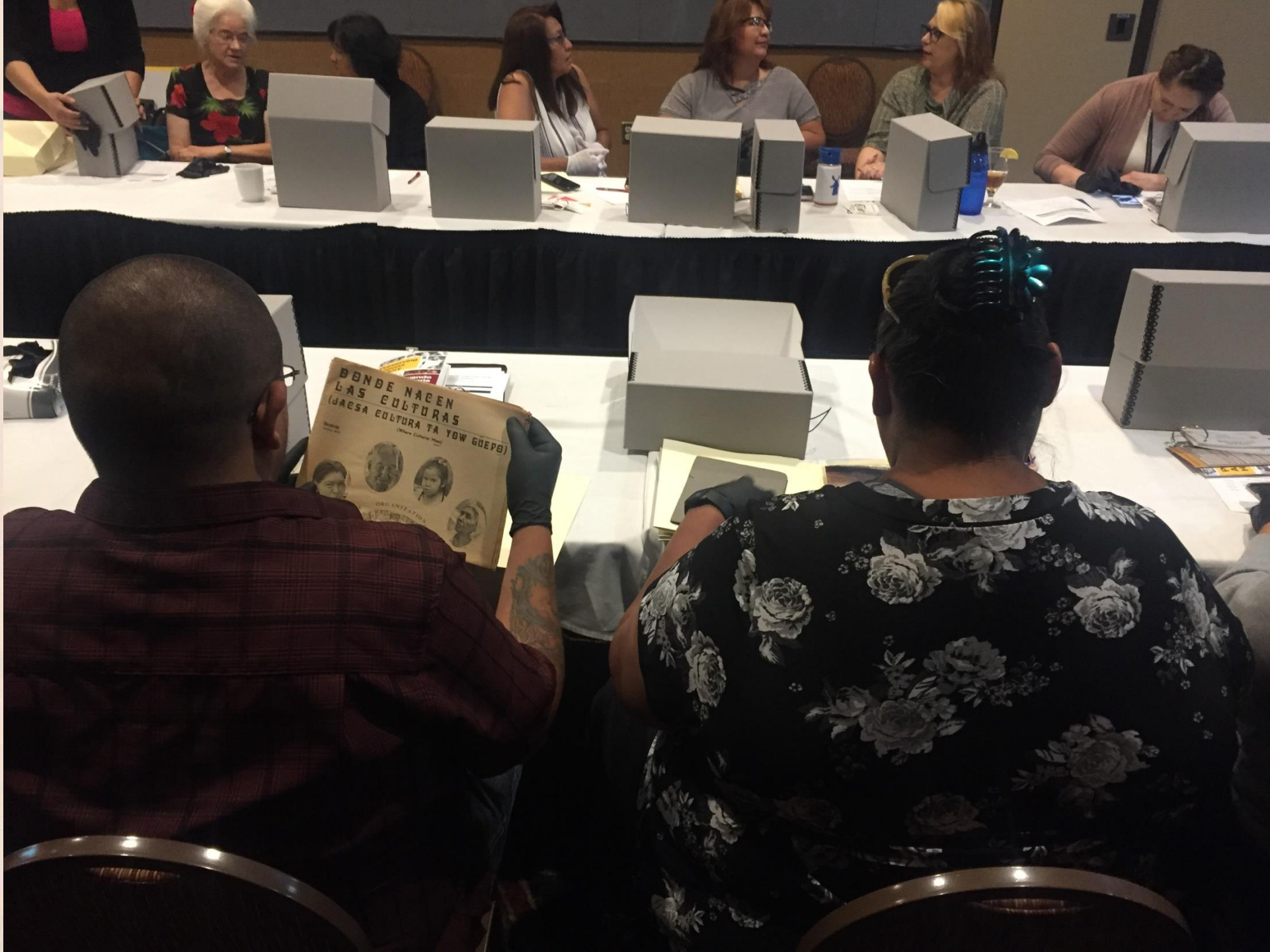


NICOLE UMayAM

DIGITAL INCLUSION LIBRARIAN, ARIZONA STATE LIBRARY,
ARCHIVES AND PUBLIC RECORD









IMPACT OF BROADBAND ON NATIVE COMMUNITIES

ANN TREACY, MODERATOR, BLANDIN FOUNDATION

TYLER SCRIBNER, NATIONAL CONGRESS OF AMERICAN INDIANS

KIMBALL SEKAQUAPTEWA, SANTA FE INDIAN SCHOOL

NICOLE UMayAM, ARIZONA STATE LIBRARY, ARCHIVES, AND PUBLIC RECORD