

**ALASKA DEPARTMENT OF FISH AND GAME
DIVISION OF COMMERCIAL FISHERIES
NEWS RELEASE**



*Sam Cotten, Commissioner
Scott Kelley, Director*



Contact:

Holly Carroll, Area Management Biologist
Deena Jallen, Assistant Area Management Biologist
Toll free fishing schedule hotline: (866) 479-7387
Fishing schedule hotline in Fairbanks: 459-7387

Lower Yukon Area Office
P.O. Box 127
Emmonak, Alaska 99581
Phone: (907) 949-1320
Fax: (907) 949-1830
Date Issued: June 25, 2018

**2018 Yukon River Summer Salmon Fishery News Release # 28
Summer Update # 4, Yukon Area Salmon Fishery
Districts Affected: Yukon Area**

The estimated Chinook salmon passage at the Pilot Station sonar is well below average. Chinook salmon run timing and abundance appear to be similar to 2015, a year with normal run timing (Figure 1). This indicates that the run may come in below the lower end of the preseason projection range of 173,000 to 251,000 fish. While a run of this size should be large enough to meet escapement goals, subsistence restrictions are necessary. The summer chum run appears to be above average, with over 1 million fish projected for the season. Fishermen may need to adjust their Chinook harvest goals, and may want to plan to harvest more chum salmon to meet their subsistence salmon needs.

The average first quarter point for Chinook salmon for a run with normal run timing at Pilot station sonar is June 18 and the midpoint is typically June 24th. The midpoint for summer chum salmon at Pilot station sonar is typically around June 27.

As of June 25, the first pulse of Chinook salmon (~27,000 fish) should be near Ruby, while small numbers of early Chinook salmon may be as far upriver as Fort Yukon. A relatively weak second pulse of Chinook salmon (~27,000 fish) was recently counted at the Pilot Station sonar and should be near Anvik and Grayling as of July 25. Early summer chum salmon may be near Tanana and the first pulse of summer chum salmon (~203,000 fish) should be near Grayling as of June 25.

Genetic mixed stock analysis (MSA) on the early group and first pulse of Chinook salmon sampled at the Pilot Station sonar project (June 2 to June 19) indicated that 56% of the fish sampled were of Canadian-origin. Genetic MSA will continue throughout the season. The age composition of 206 Chinook salmon sampled from the drift gillnets in the Pilot Station test fishery through June 19 was 13% age-4, 49% age-5, and 37% age-6 fish. The proportion of fish that were female was well above average.

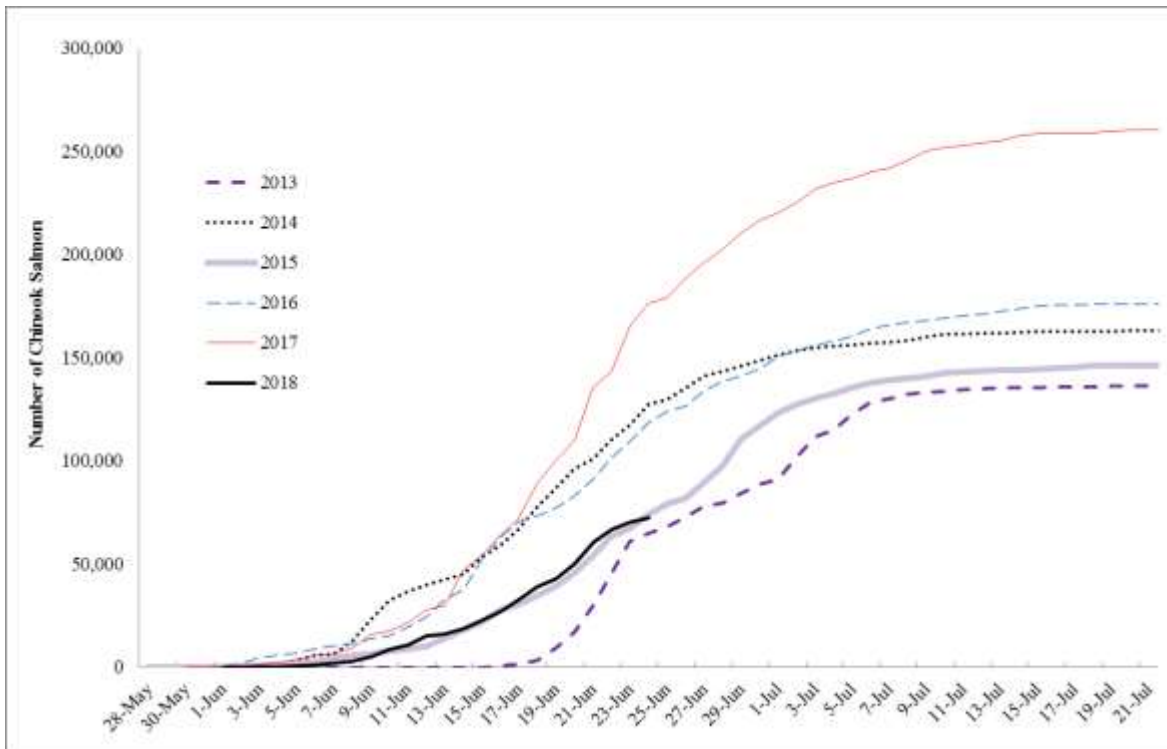


Figure 1. Cumulative Chinook salmon passage at the Pilot Station sonar project, 2013 – 2018.

Assessment Projects

Lower Yukon Test Fishery (LYTF)/ ADF&G and YDFDA

The combined cumulative Chinook salmon CPUE for the 8.5-inch set gillnet at the Big Eddy and Middle Mouth sites, as of June 24, is 12.02, which is below the historical average of 15.92. However, operations may not be comparable to previous years because fishing duration and net locations have been affected due to high water and large amounts of woody debris. River conditions have recently improved and the nets are operating well.

The cumulative Chinook salmon CPUE in the 8.25-inch drift gillnet at the Big Eddy site, as of June 24, is 325.75, which is above the historical average of 278.20. As of June 24, the combined cumulative summer chum salmon CPUE for the 5.5-inch drift gillnet at the Big Eddy and Middle Mouth sites is 9,723.78, which is well above the historical median of 3,809.62 for this date.

Sonar Project near Pilot Station/ ADF&G

The sonar project near Pilot Station began operations on June 1. The project is operating well and is not experiencing any issues with debris or equipment malfunction. Chinook salmon passage, as of June 24, is estimated to be 72,515 fish which is below the historical cumulative average of 101,742 Chinook salmon for this date. Summer chum salmon passage, as of June 24, is estimated to be 590,089 fish which is below the historical cumulative median of 706,261 fish for this date.

Anvik River Sonar / ADF&G

The Anvik River sonar began operations on June 15. Summer chum salmon passage, as of June 24, is 10,117 fish, which is below the historical cumulative median of 24,454 fish for this date. The biological escapement goal is 350,000–700,000 summer chum salmon past the sonar project.

Management Strategy

To allow some reduced harvest of Chinook salmon and provide summer chum harvest opportunity, fishing time has been reduced to half of the regulatory fishing schedule in most districts. One subsistence period per week has also been cancelled in most districts to protect the first pulse and to allow early groups of fish to pass to the upper river. To further reduce Chinook salmon harvest, most subsistence fishing periods have been restricted to 6-inch or smaller mesh gill nets. In Districts 1-3 subsistence fishing has been reduced to a single period per week to limit harvest on the remainder of the Chinook run.

Commercial summer chum salmon fishing using selective gear is ongoing in Districts 1 and 2 and is beginning in Subdistrict 4-A with live-release fish wheels. Commercial fishermen are required to release all Chinook salmon alive and report the number of released fish on their fish tickets.

Subsistence Fishing Schedule:

South Coastal District (from the Naskonat Peninsula north to 62 degrees North latitude including the marine waters near Hooper Bay and Scammon Bay):

Subsistence fishing is open 24 hours a day, 7 days per week with 7.5-inch or smaller mesh gillnets.

District 1 (including the Black River and North Coastal District):

Subsistence fishing is closed and will reopen with 6-inch or smaller mesh gillnets for an 18-hour period from:

- **2 p.m. Friday, June 29 to 8 a.m. Saturday, June 30**

Districts 2 and 3:

Subsistence fishing is open with 6-inch or smaller mesh gillnets for two 18-hour periods:

- **2 p.m. Monday, June 25 to 8 a.m. Tuesday, June 26**
- **2 p.m. Monday, July 2 to 8 a.m. Tuesday, July 3**

Innoko River:

Subsistence fishing is open 24 hours a day, seven days per week with 7.5-inch or smaller mesh gillnets and fish wheels.

Subdistrict 4-A (including the Anvik River and the communities of Anvik, Grayling, Kaltag, Nulato, and Koyukuk):

The previously announced period from 6 p.m. Wednesday, June 27 to 6 p.m. Thursday, June 28 **is cancelled**. This is to ensure passage of Chinook salmon to the upper river.

Subsistence fishing is open with 6-inch or smaller mesh gillnets and will close effective 6 p.m. Monday, June 25.

Fishing will reopen with **6-inch or smaller mesh gillnets** for the following 24-hour period:

6 p.m. Sunday, July 1 to 6 p.m. Monday, July 2

Drift gillnets and fish wheels may be used for salmon in Subdistrict 4-A. Subsistence fishing is closed between the 24-hour fishing periods.

Koyukuk River:

Subsistence fishing is open 24 hours a day, seven days per week with 7.5-inch or smaller mesh gillnets and fish wheels.

Subdistricts 4-B and 4-C (including the communities of Galena and Ruby):

Subsistence fishing is open with 7.5-inch or smaller mesh gillnets and will close effective 6 p.m. Monday, June 25.

Fishing will reopen with **6-inch** or smaller mesh gillnets for the following 24-hour period:

6 p.m. Sunday, July 1 to 6 p.m. Monday, July 2

During these openings, fishermen may use set gillnets, drift gillnets, and fishwheels.

Subdistricts 5-A, 5-B, and 5-C (including the communities of Tanana and Rampart)

Subsistence fishing is currently closed. Fishing will reopen for two 24-hour periods with **6-inch or smaller mesh set gillnets** and fish wheels from:

6 p.m. Tuesday, June 26 to 6 p.m. Wednesday, June 27

6 p.m. Friday, June 29 to 6 p.m. Saturday, June 30

A fishing permit is required to fish for all species in the following locations: the portions of Subdistricts 5-C and 5-D from the western most tip of Garnet Island upstream to the mouth of Dall River (Dalton Highway bridge area) and from the upstream mouth of 22 Mile Slough to the U.S./Canada border. Subsistence fishermen outside of the permit areas are encouraged to fill out their subsistence salmon catch calendars. Calendars and subsistence fishing permits are available from the Alaska Department of Fish and Game in Fairbanks.

Subdistrict 5-D Lower and Middle (from an ADF&G regulatory marker two miles downstream of Waldron Creek upstream to 22 Mile Slough, including the Porcupine River and all other adjacent tributaries, and the communities of Stevens Village, Beaver, Venetie, Chalkyitsik, and Fort Yukon)

Subsistence fishing is currently open 24 hours per day, 7 days per week with 7.5-inch or smaller mesh gillnets and fish wheels.

Effective **10 p.m. Sunday, July 1**, subsistence salmon fishing will close.

Subsistence salmon fishing will reopen for 3.5 days (84 hours) with **6-inch or smaller mesh gillnets** and fish wheels **from 10 a.m. Thursday, July 5, to 10 p.m. Sunday, July 8.**

Subdistrict 5-D Upper (from 22 Mile Slough to the U.S./Canada border and including all adjacent tributaries, which includes the communities of Circle and Eagle):

Subsistence fishing is **open 24 hours per day, 7 days per week** with 7.5-inch or smaller mesh gillnets and fish wheels. Fishermen should expect reductions in fishing time and gear restrictions in future announcements.

Subdistricts 6-A and 6-B (from the mouth of the Tanana River upstream to the regulatory marker at the mouth of Wood River, which includes the communities of Manley, Minto, and Nenana)

Subsistence fishing is closed and will reopen at 6 p.m. Monday, June 25 for two **21-hour** periods per week with **6-inch or smaller mesh gillnets** and fish wheels from:

6 p.m. Mondays to 3 p.m. Tuesdays

6 p.m. Fridays to 3 p.m. Saturdays

A subsistence fishing permit is required to fish for salmon in the Tanana River drainage below the Wood River. Permits are available from the ADF&G office in Fairbanks. Subsistence salmon fishermen in the upper portion of Subdistrict 6-B, from three miles upstream of the mouth of Totchaket Slough to Wood River, are required to report their harvest catches to the department by 4:30 p.m. Thursday each week by reporting online at www.adfg.alaska.gov/sf/PU/ or by calling (907) 459-7388. When you call, please provide your name, permit number, fishing location, and daily catch by species for that week.

Kantishna River:

The Kantishna River is open 24 hours a day, seven days per week. Fishermen may use fish wheels or gillnets with a mesh size of 7.5 inches or less.

Old Minto Area:

Subsistence fishing is currently open with 7.5-inch or smaller mesh gillnets and fish wheels and **will close at 6 p.m. Wednesday, June 27**. Fishing will **reopen at 6 p.m. Friday, June 29** on the regulatory schedule of five days per week from:

6 p.m. Fridays until 6 p.m. Wednesdays

Fishermen may use fish wheels or set gillnets with a mesh size of 7.5 inches or smaller.

Upper Tanana Area (the Tanana River from the confluence with the mouth of Volkmar River on the north bank and the mouth of the Johnson River on the south bank upstream to the Tanana River headwaters):

Subsistence fishing is open 24 hours a day, seven days per week with 7.5-inch or smaller mesh size gillnets and fish wheels. A subsistence fishing permit is required in the Upper Tanana River Drainage.

Personal Use Fishing:

Subdistrict 6-C (from the regulatory marker at the mouth of the Wood River upstream to the Salcha River, which includes the communities of Fairbanks, North Pole, and Salcha):

Effective 6 p.m. Monday, June 25, personal use fishing will be open for two **21-hour** periods per week with **6-inch or smaller mesh gillnets** and fish wheels from:

6 p.m. Mondays to 3 p.m. Tuesdays

6 p.m. Fridays to 3 p.m. Saturdays

A personal use salmon fishing permit and sport fish license are required to fish in Subdistrict 6-C. Fishermen are required to report their harvest catches to the department by **4:30 p.m.**

Thursday each week by reporting online at www.adfg.alaska.gov/sf/PU/ or by calling **(907) 459-7388**. When you call, please provide your name, permit number, fishing location, and daily catch by species for that week.

Commercial Fishing:

The summer chum salmon commercial fishery in Districts 1 and 2 is limited to fishing with dip nets and beach seines. **All Chinook salmon must be released alive immediately and recorded on a fish ticket.** Fishermen must confirm they have a buyer prior to fishing.

Commercial Fishing Periods:

District 1 (including Black River) Commercial:

Commercial fishing will open for 12-hour periods with dip nets and beach seine gear:

- Noon to Midnight, Monday, June 25
- Noon to Midnight, Tuesday, June 26
- Noon to Midnight, Wednesday, June 27
- Noon to Midnight, Thursday, June 28
- Noon to Midnight, Saturday, June 30

District 2 Commercial:

Commercial fishing will open for 12-hour periods with dip nets and beach seines:

- Noon to Midnight, Tuesday, June 26
- Noon to Midnight, Wednesday, June 27
- Noon to Midnight, Thursday, June 28
- Noon to Midnight, Friday, June 29
- Noon to Midnight, Saturday, June 30
- Noon to Midnight, Sunday, July 1

Subdistrict 4-A Commercial (from $\frac{3}{4}$ miles downstream of Old Paradise Village to Cone Point):

Commercial fishing will open at 12:01 a.m. Tuesday, June 26. Fishermen must use commercial fish wheels that are manned at all times of operation. All Chinook salmon caught in commercial fish wheels must be immediately returned to the water alive and recorded on a fish ticket.

Fishing will be open for 24-hours a day each day:

- Period #1: Tuesday, June 26
- Period #2: Wednesday, June 27
- Period #3: Thursday, June 28
- Period #4: Friday, June 29
- Period #5: Saturday, June 30
- Period #6: Sunday, June 1
- Period #7: Monday, July 2

These commercial fishing periods do not affect current subsistence management actions and fishing schedules.

Find News Releases, test fish catches, & sonar counts on Facebook: www.facebook.com/YukonRiverFishingADFG

-end-