



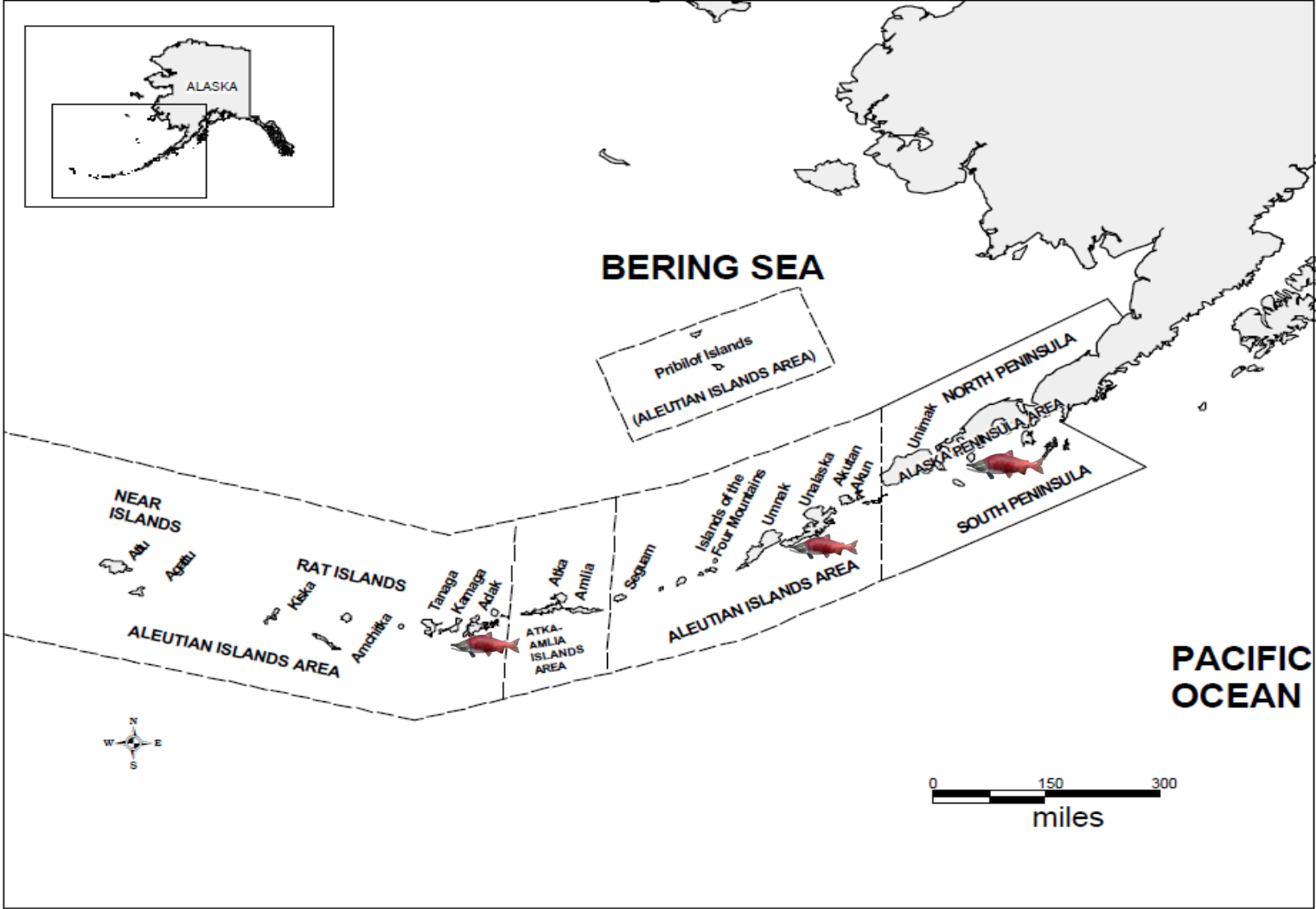
Escapement and Subsistence Harvest of Alaska Peninsula and Aleutian Island Salmon Systems



Tyler Lawson

Alaska Department of Fish & Game
Assistant Area Management Biologist
Alaska Peninsula and Aleutian Islands



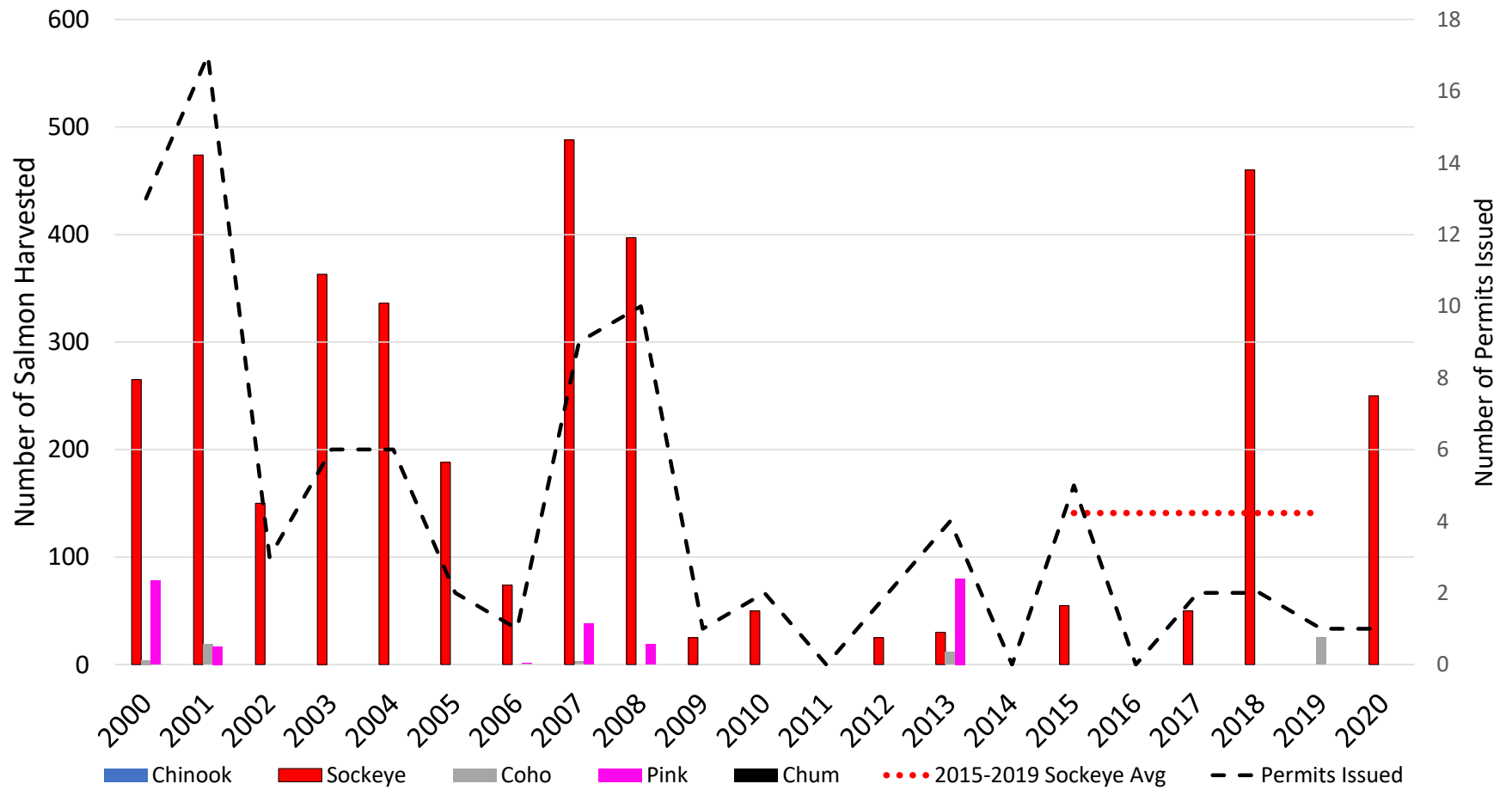


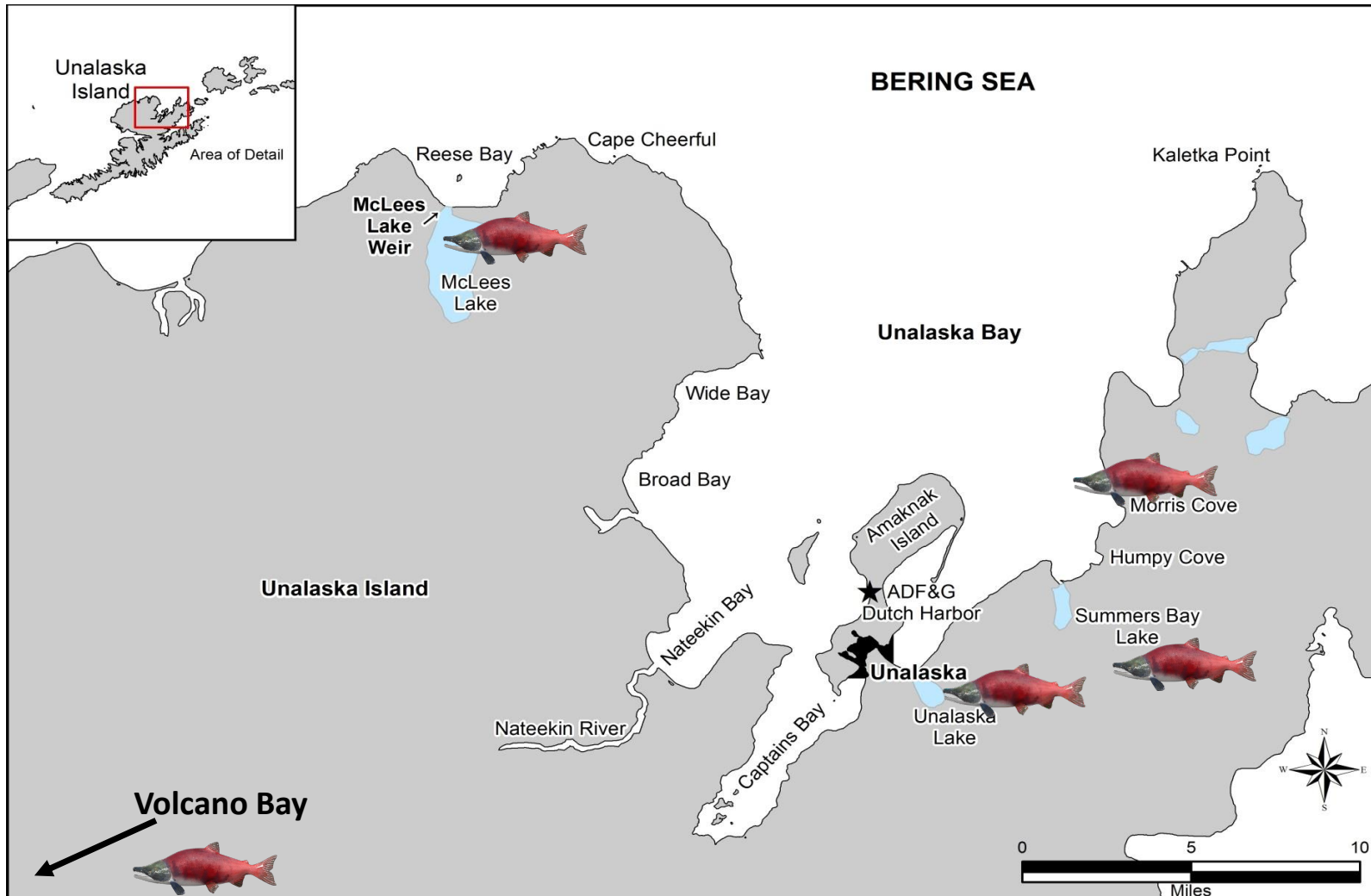
FCR23-12 Adak - Kagalaska FW Closure





Adak Subsistence Salmon Harvest 2000-2020



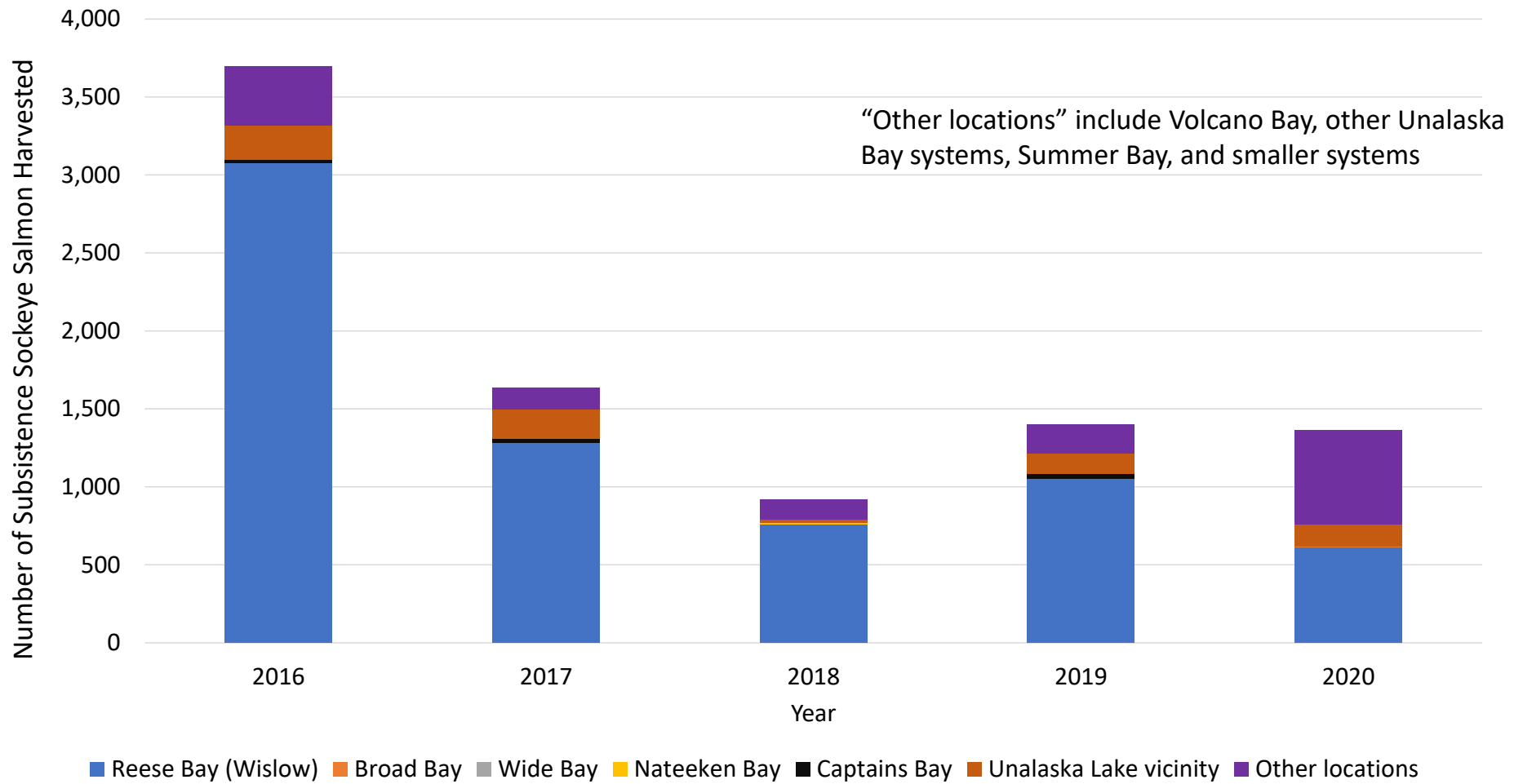


Unalaska Subsistence Salmon Harvest 2000-2020



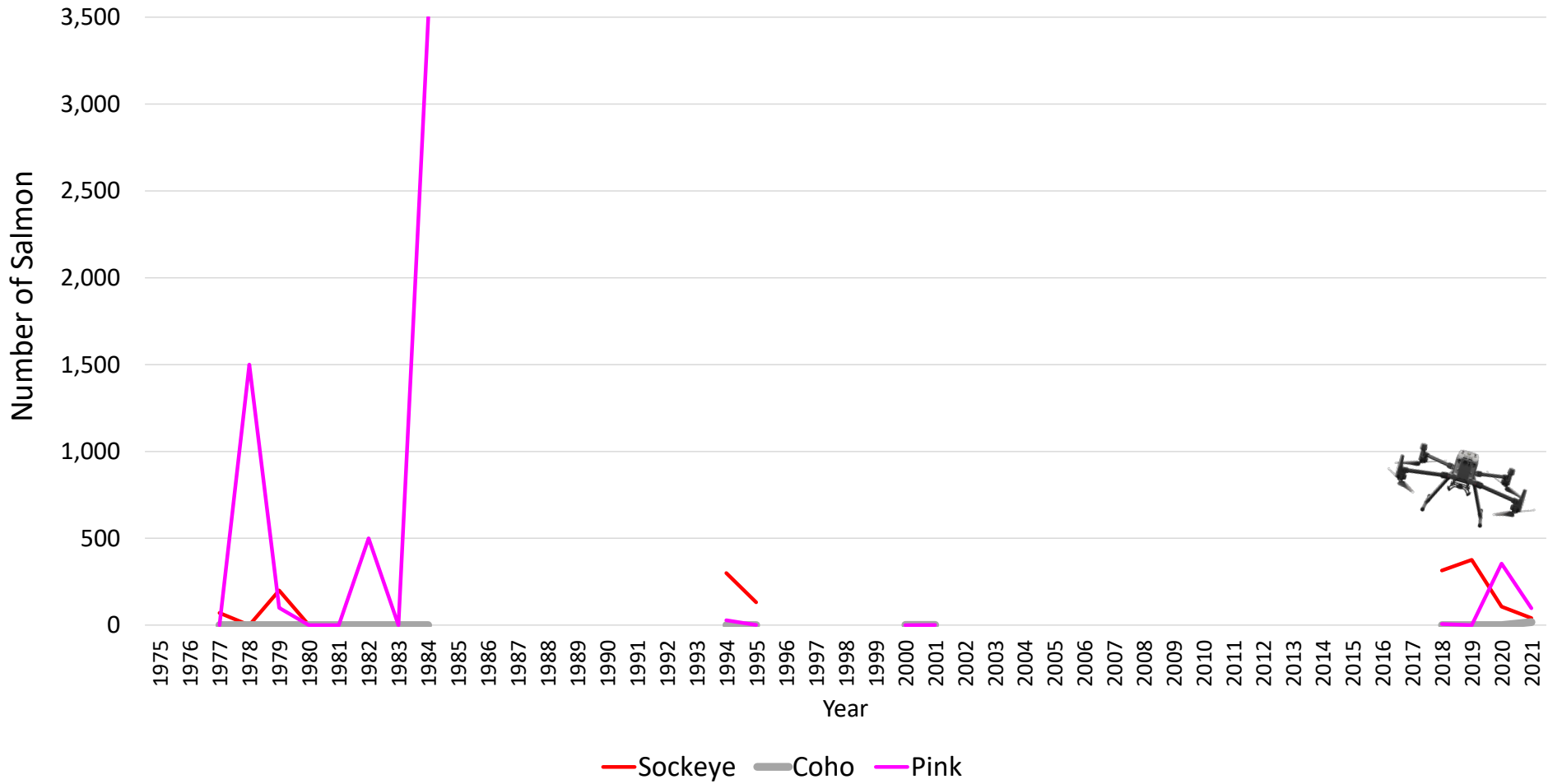


Number of Unalaska Subsistence Sockeye Harvested by Location 2016-2020



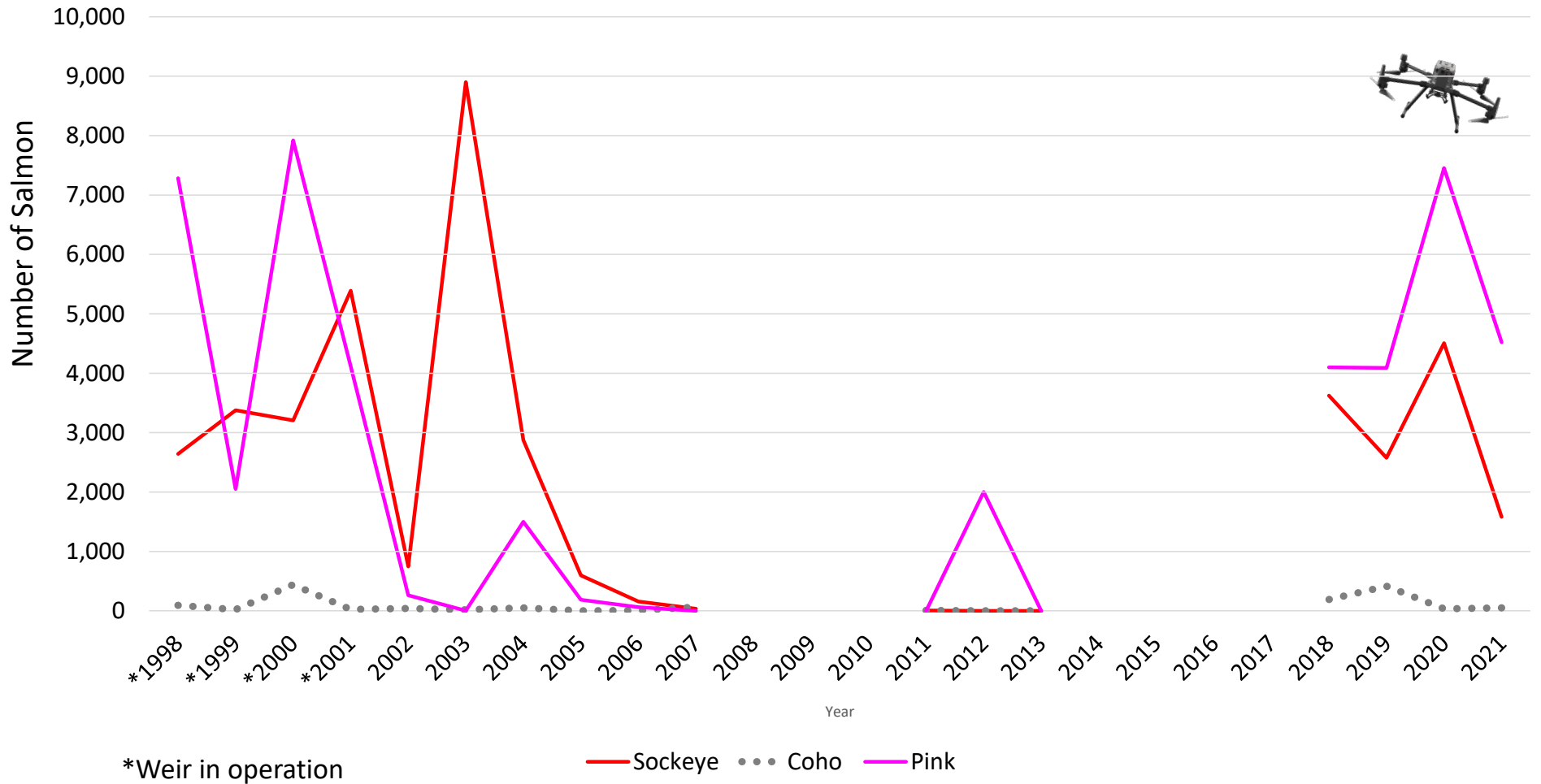
FCR21-09

Morris Cove Salmon Escapement 1975-2021



FCR21-09

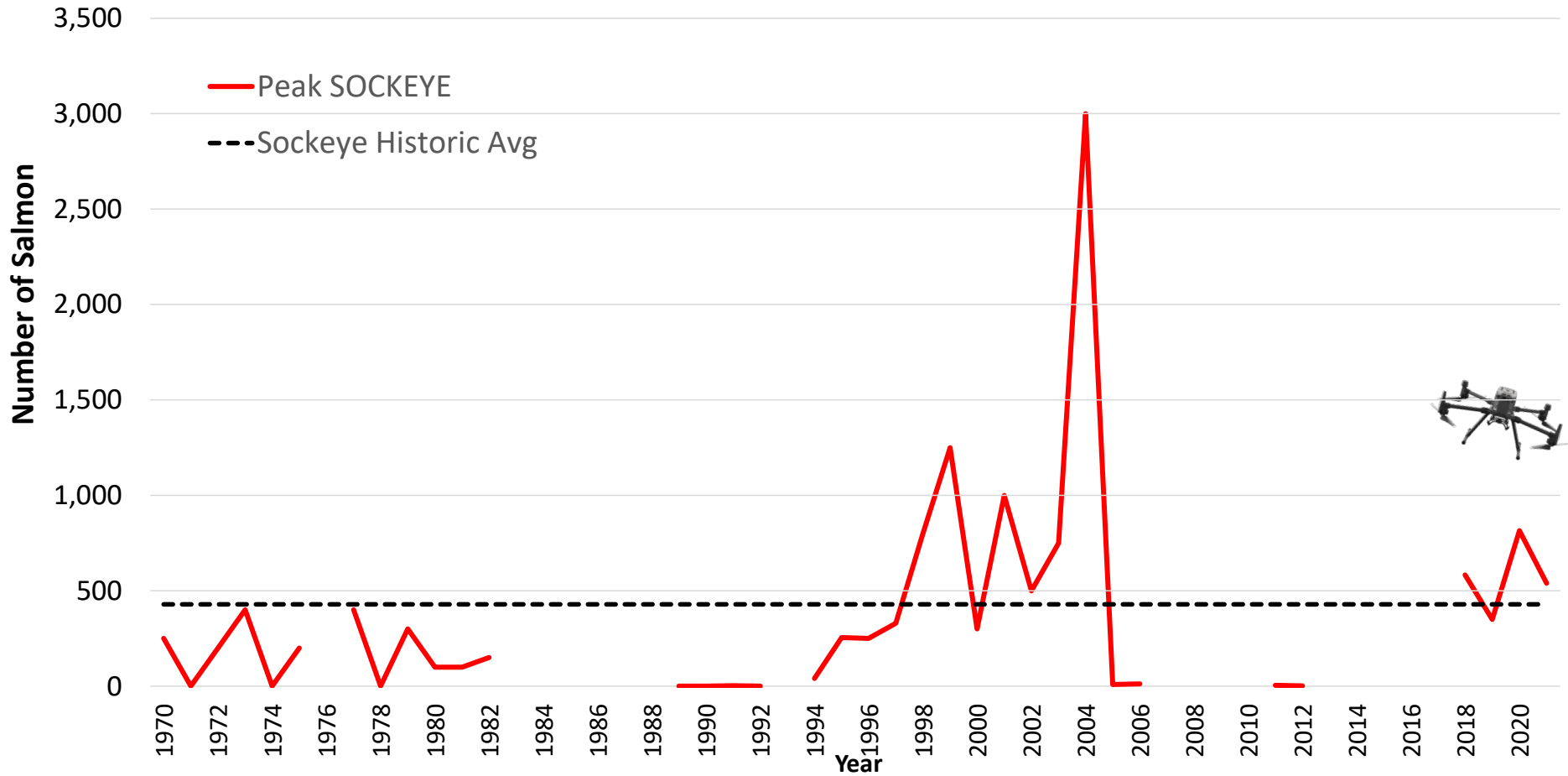
Summer Bay Escapement 1998-2021



FCR 21-08

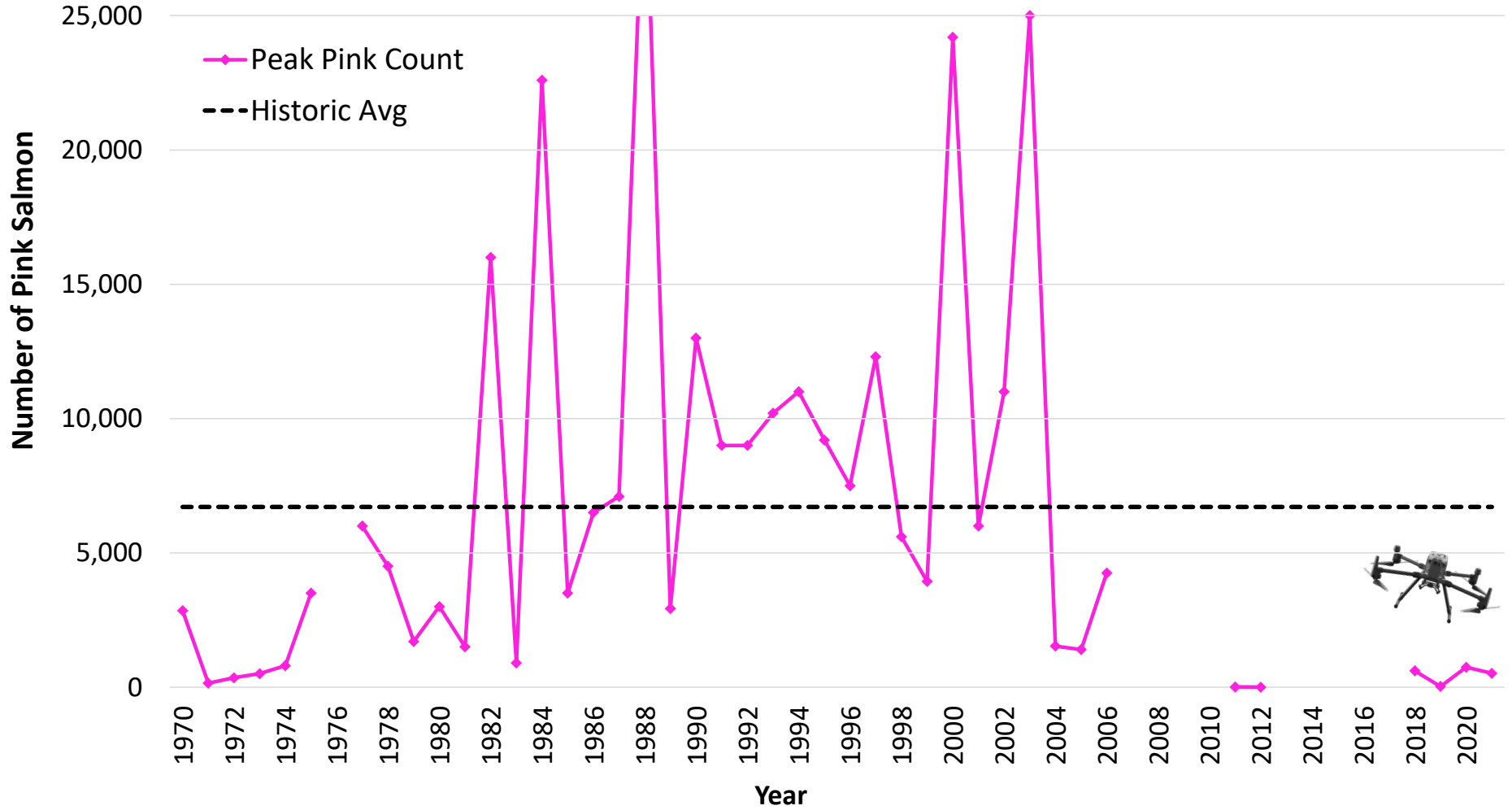


Unalaska (Iliuliuk) Lake Sockeye Escapement 1970-2021



FCR 21-08

Unalaska (Iliuliuk) Lake Pink Salmon Escapement 1970-2021

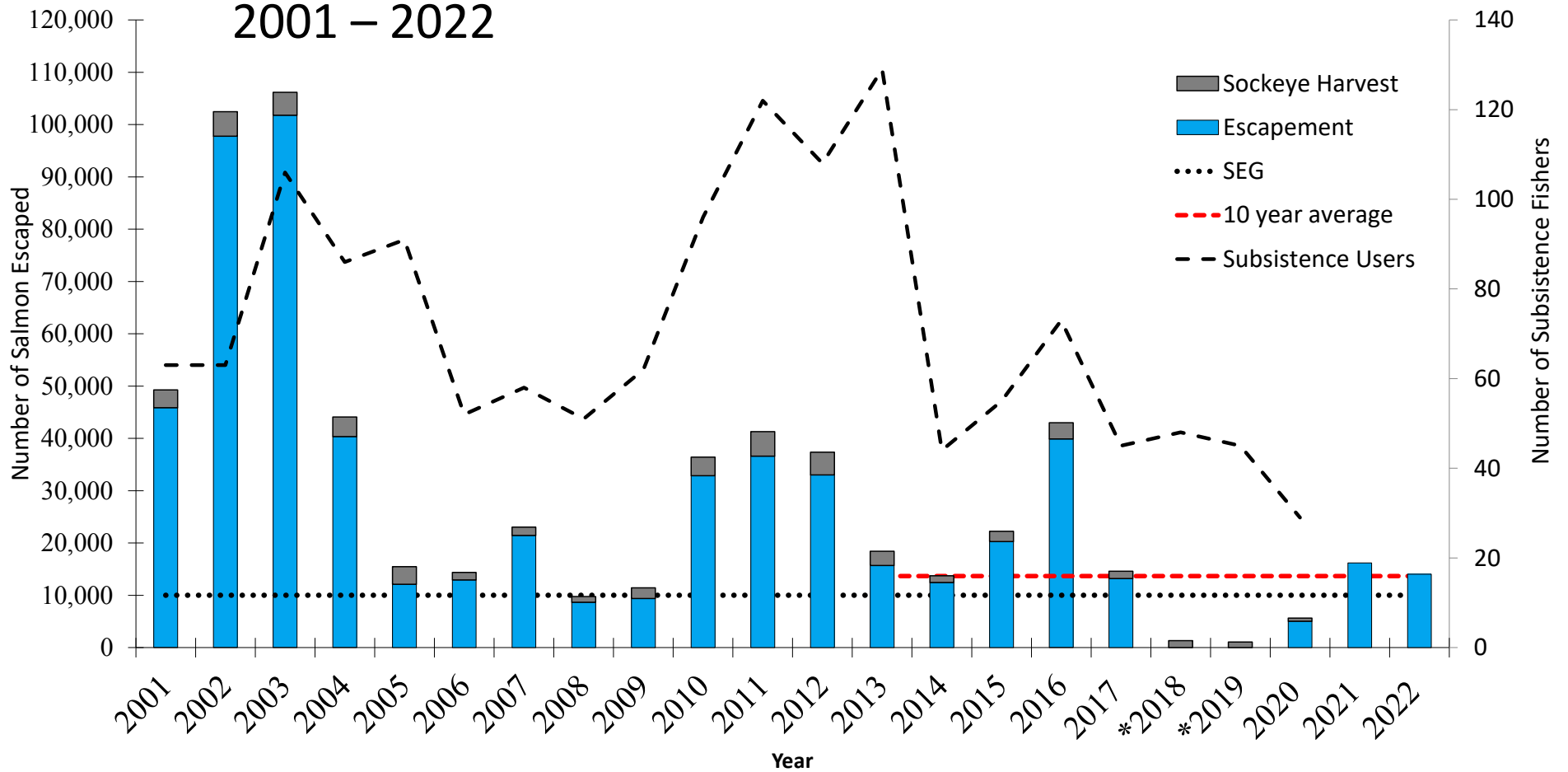


FCR21-11 McLees Lake - Reese (Wislow) Bay

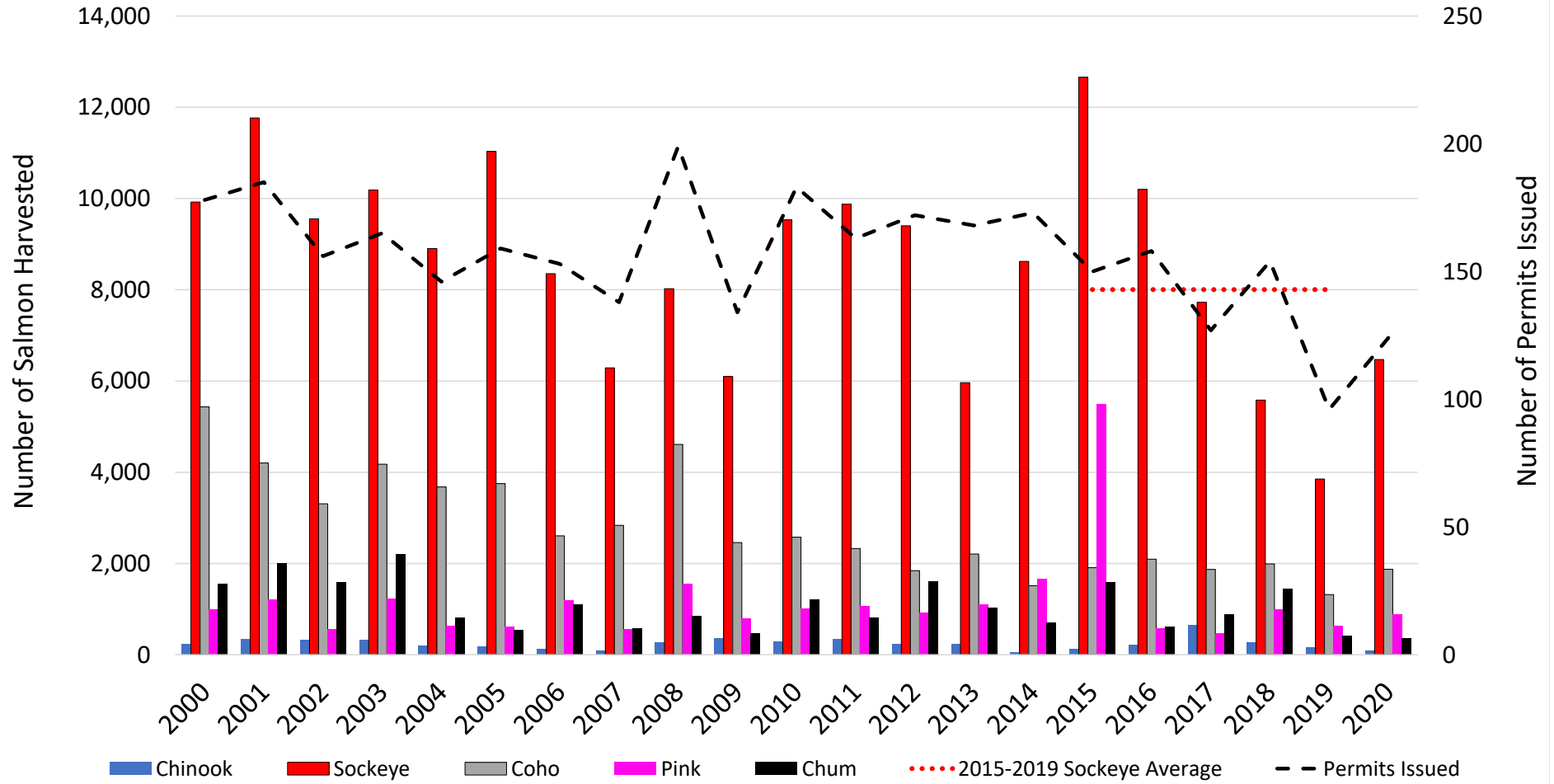


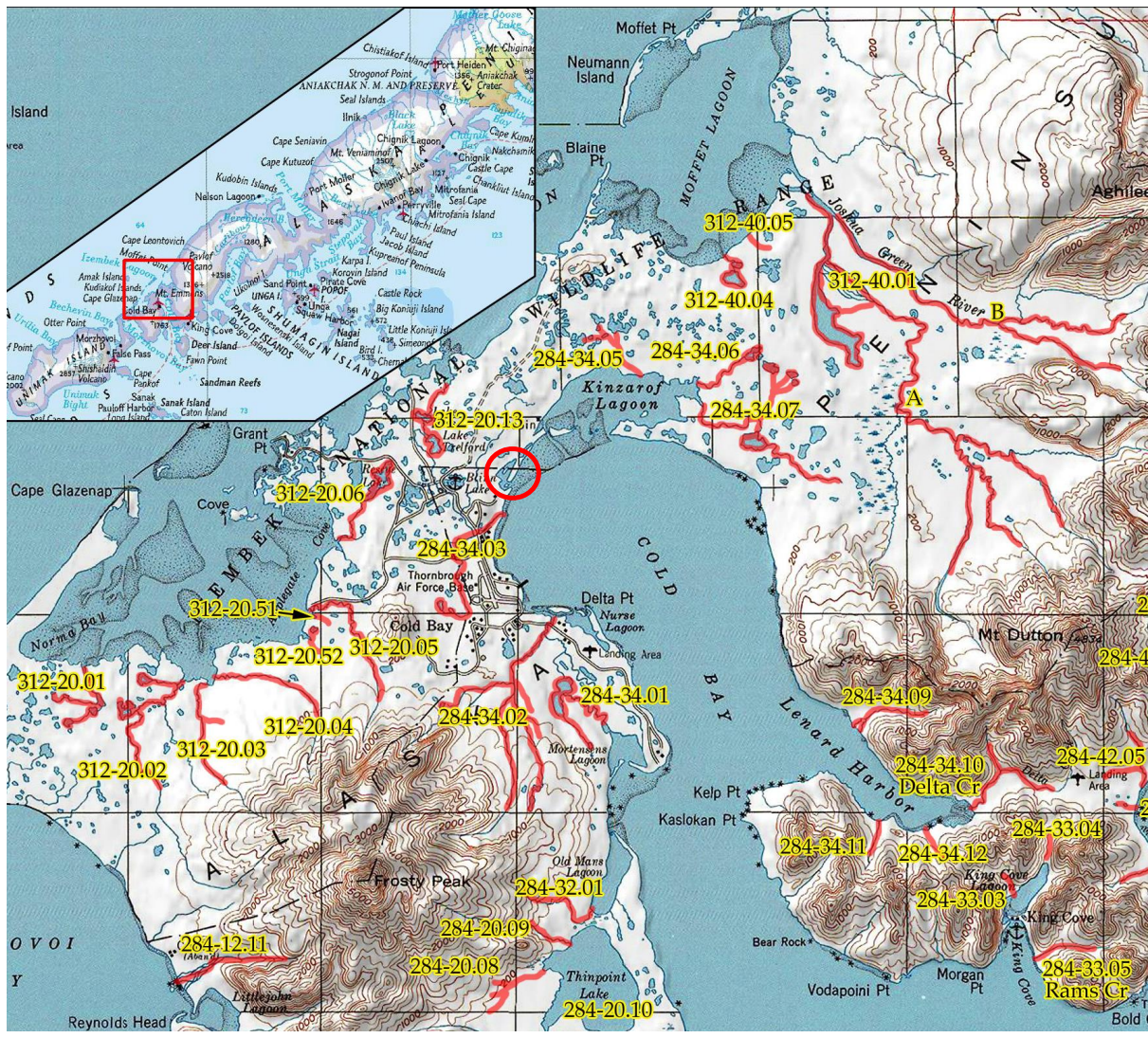
FCR 21-11

McLees Lake Sockeye Escapement and Harvest 2001 – 2022

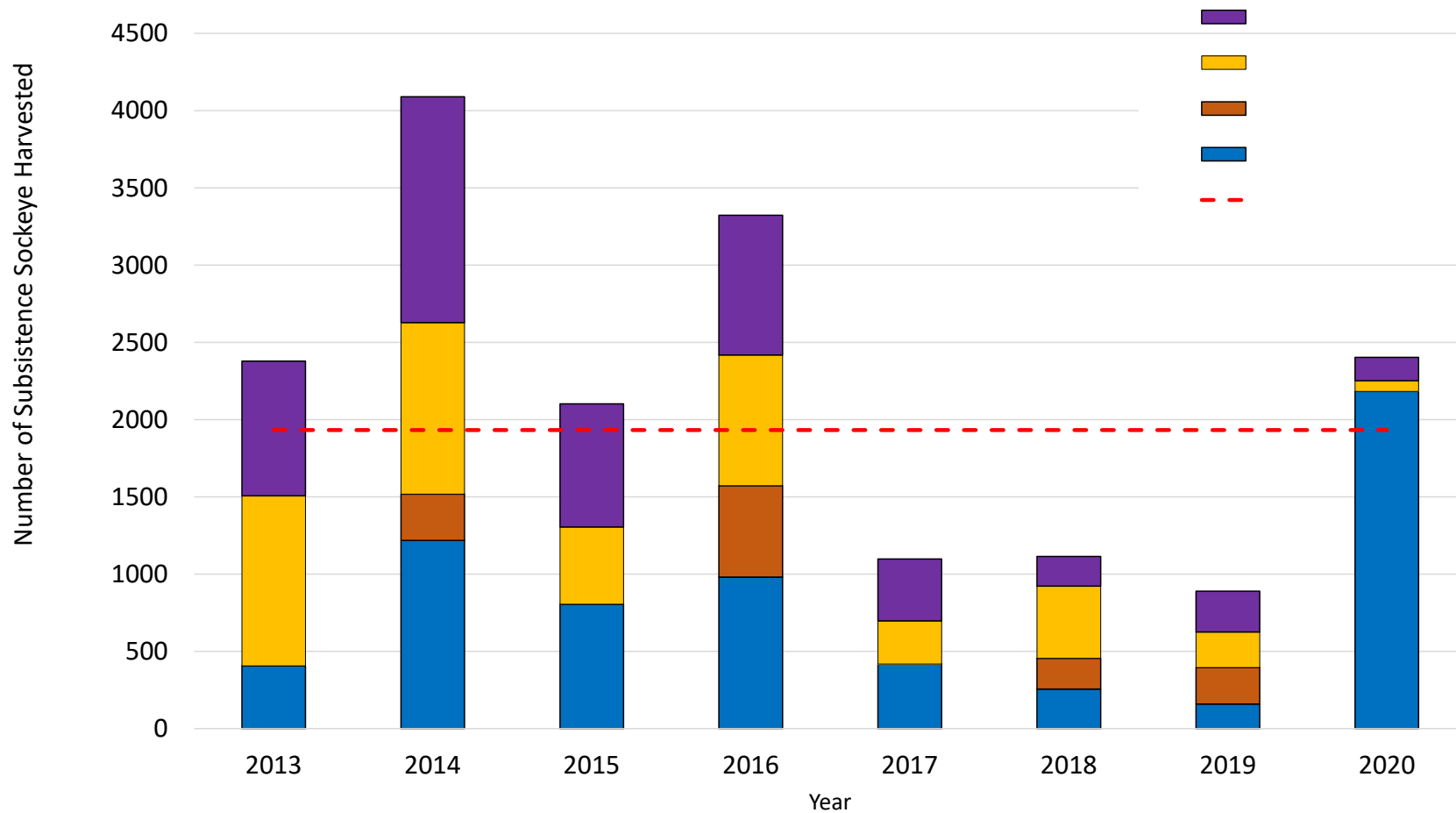


Alaska Peninsula Subsistence Salmon Harvest 2000-2020

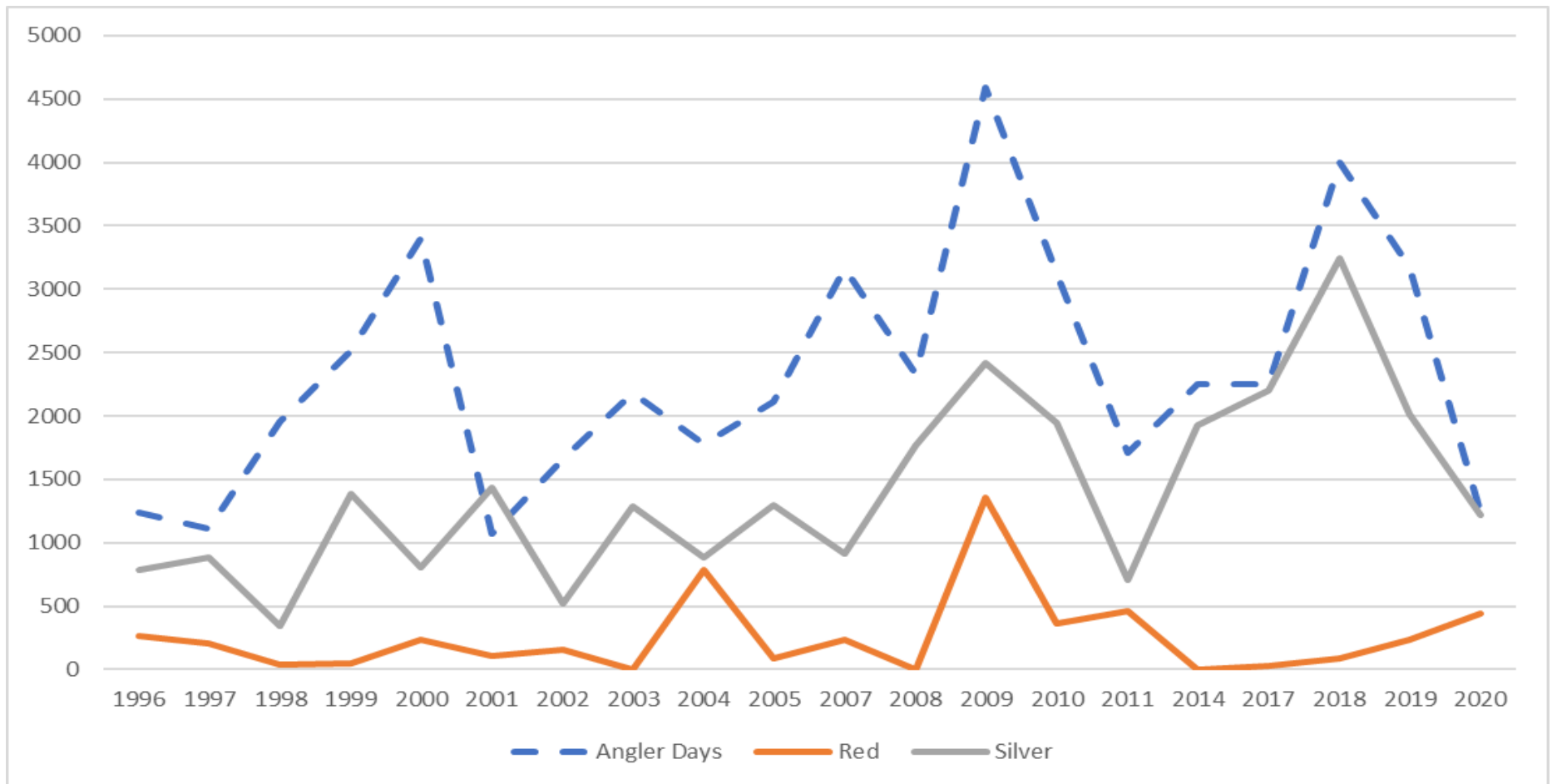




2013 - 2020 Subsistence Sockeye Harvested near Cold Bay



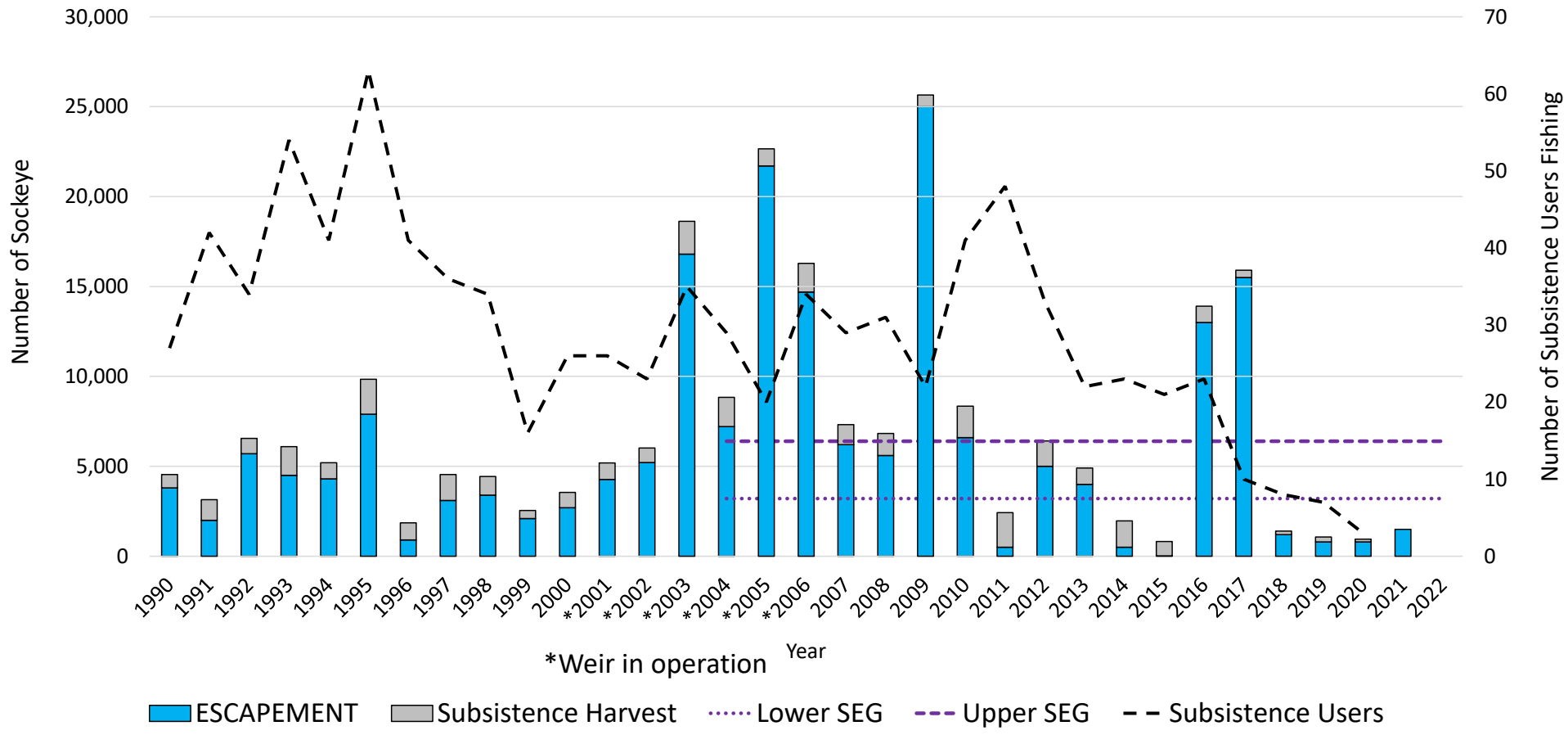
1996 – 2020 Cold Bay Sport Fish Harvest



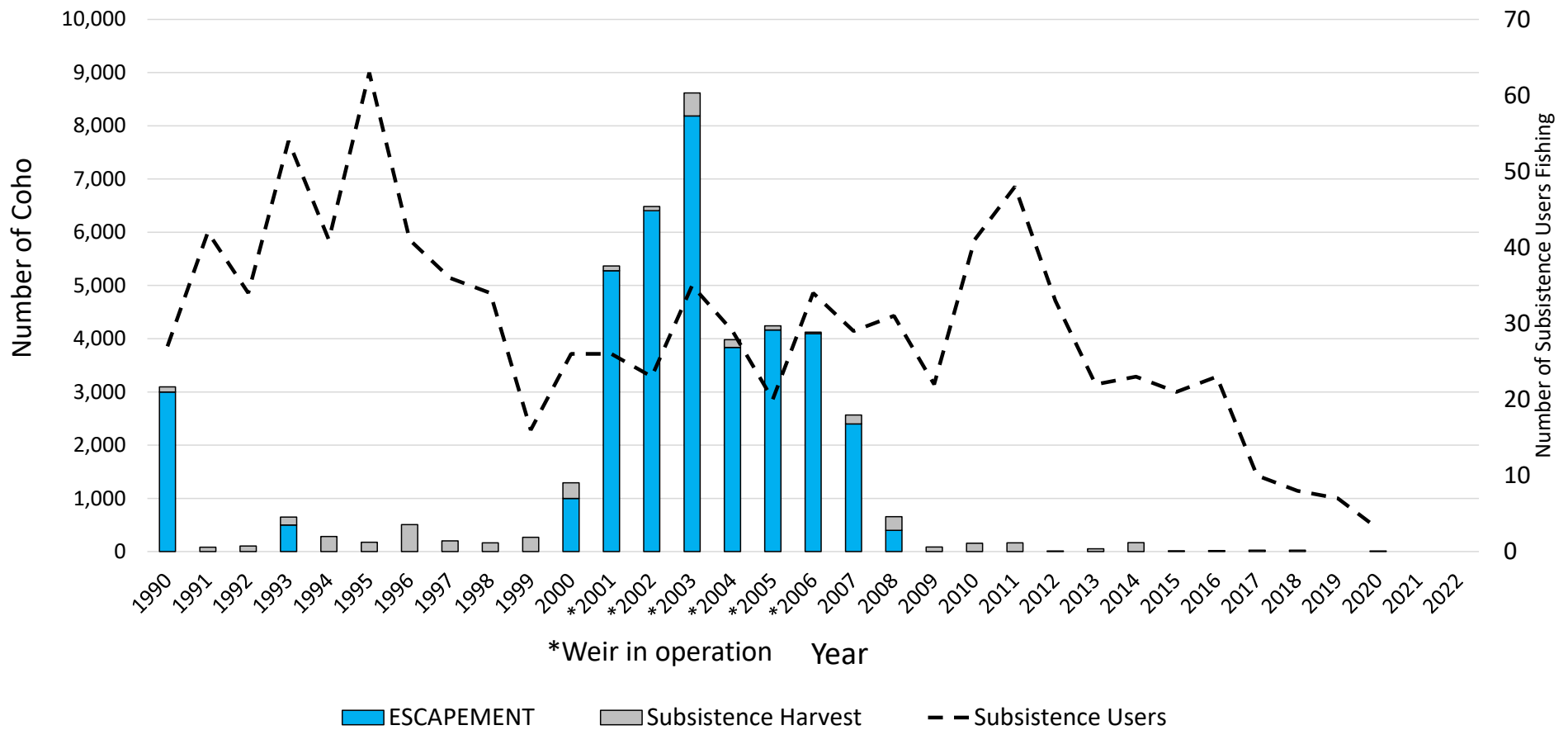
Mortensen's Lagoon



1990 - 2022 Mortensen's Sockeye Salmon Escapement and Harvest

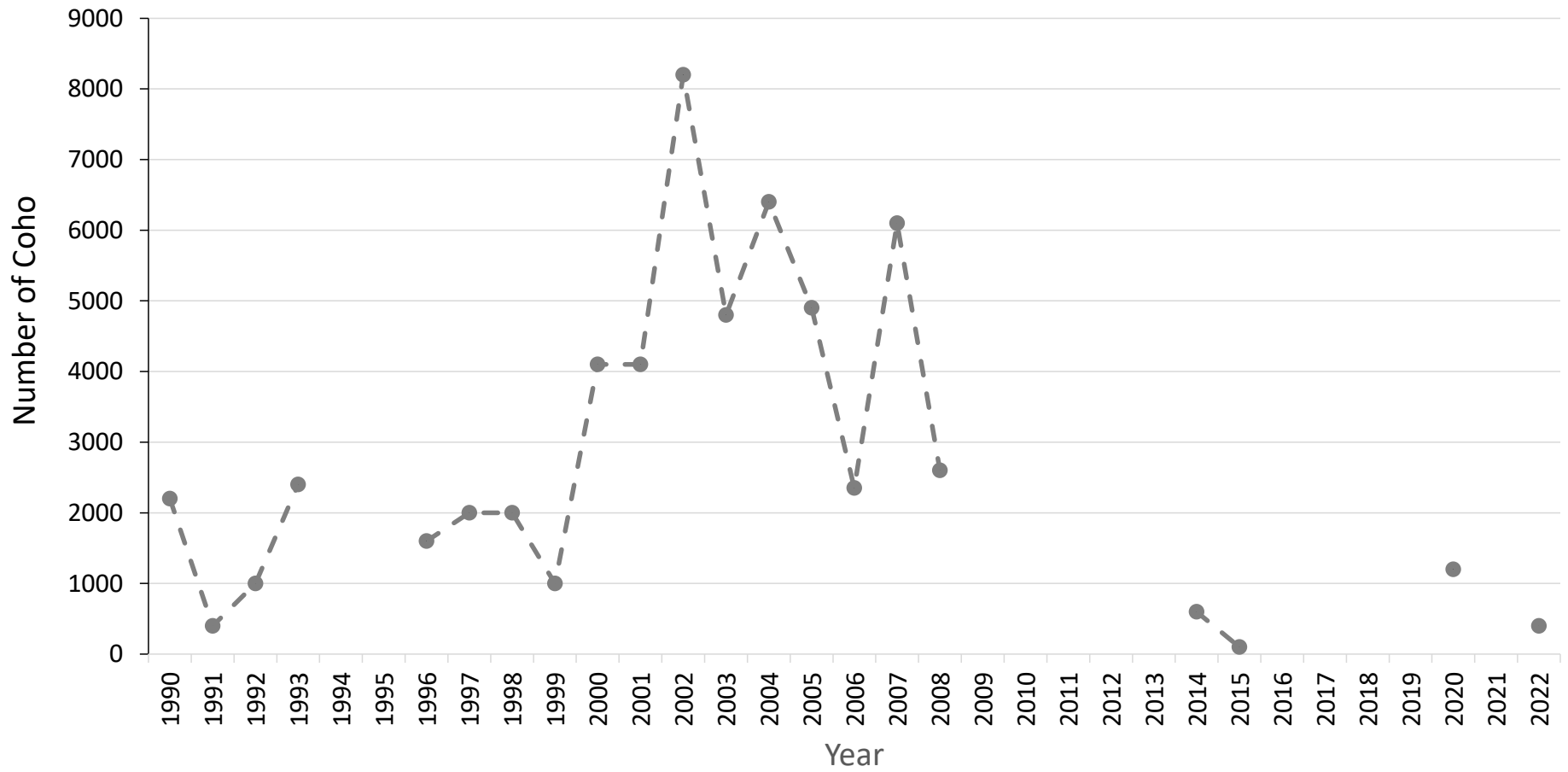


1990 - 2022 Mortensen's Coho Salmon Escapement

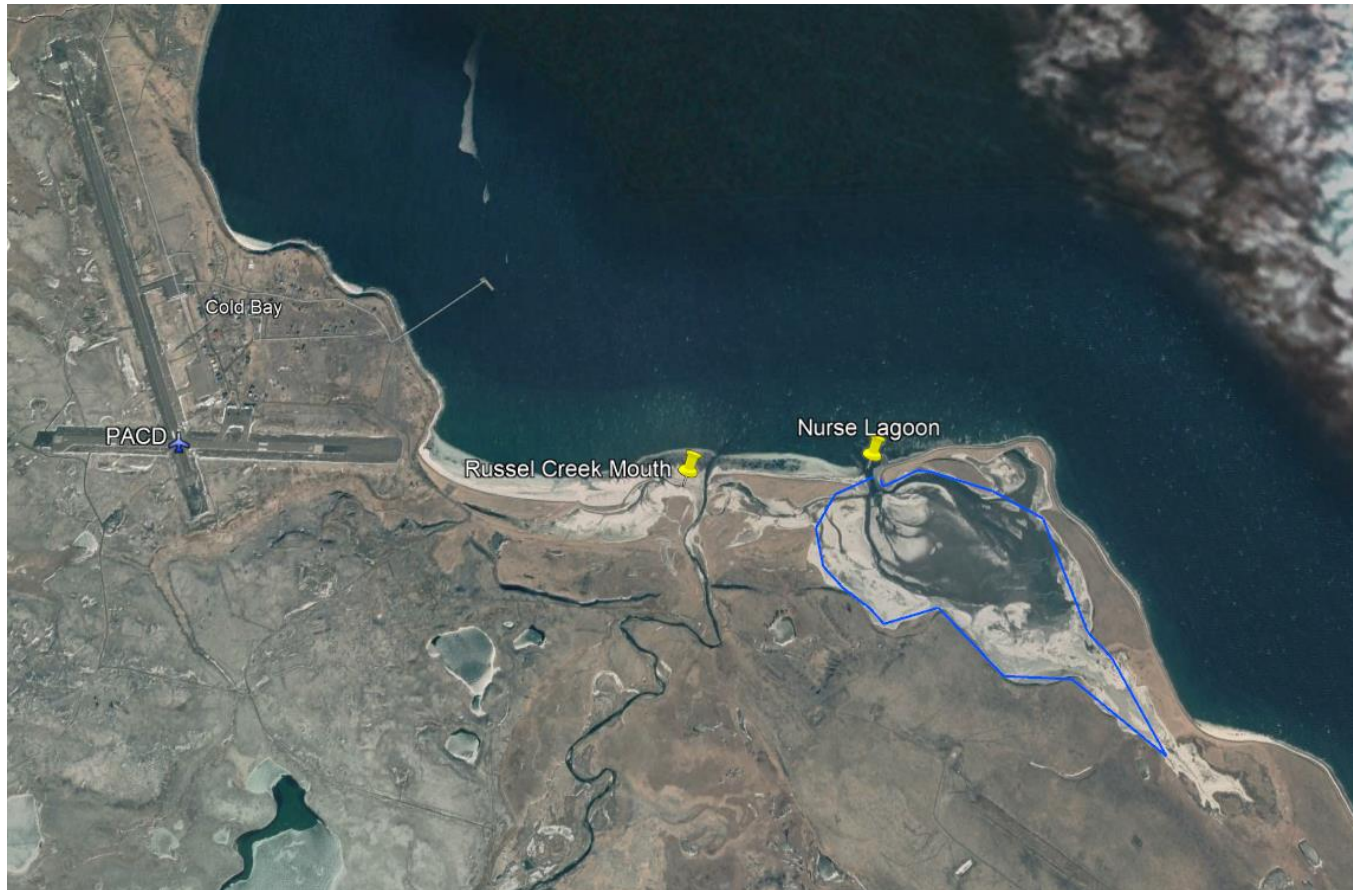


FCR 21-13

Russel Creek Coho Escapement from Aerial Surveys 1990-2022



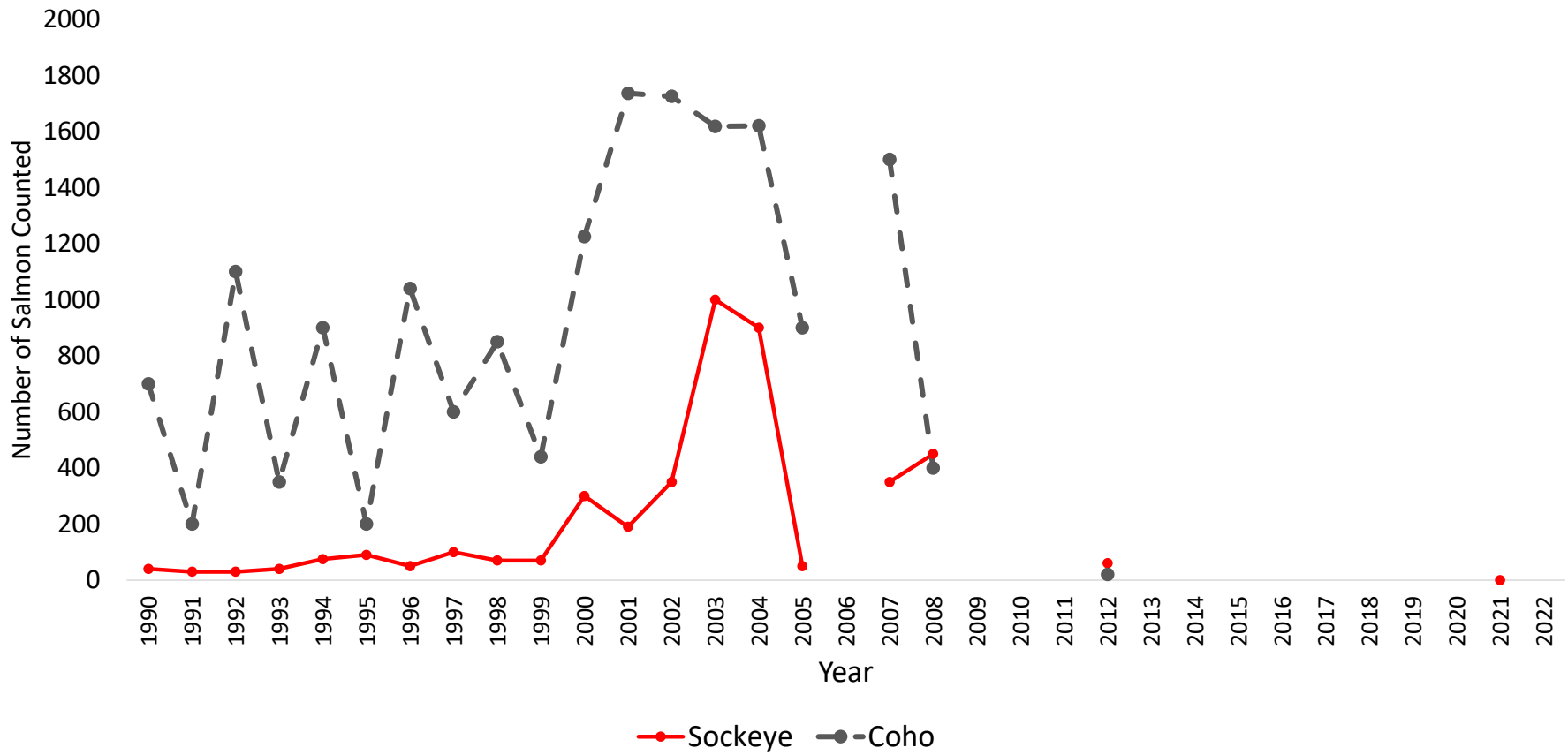
FCR21-13 Nurse Lagoon



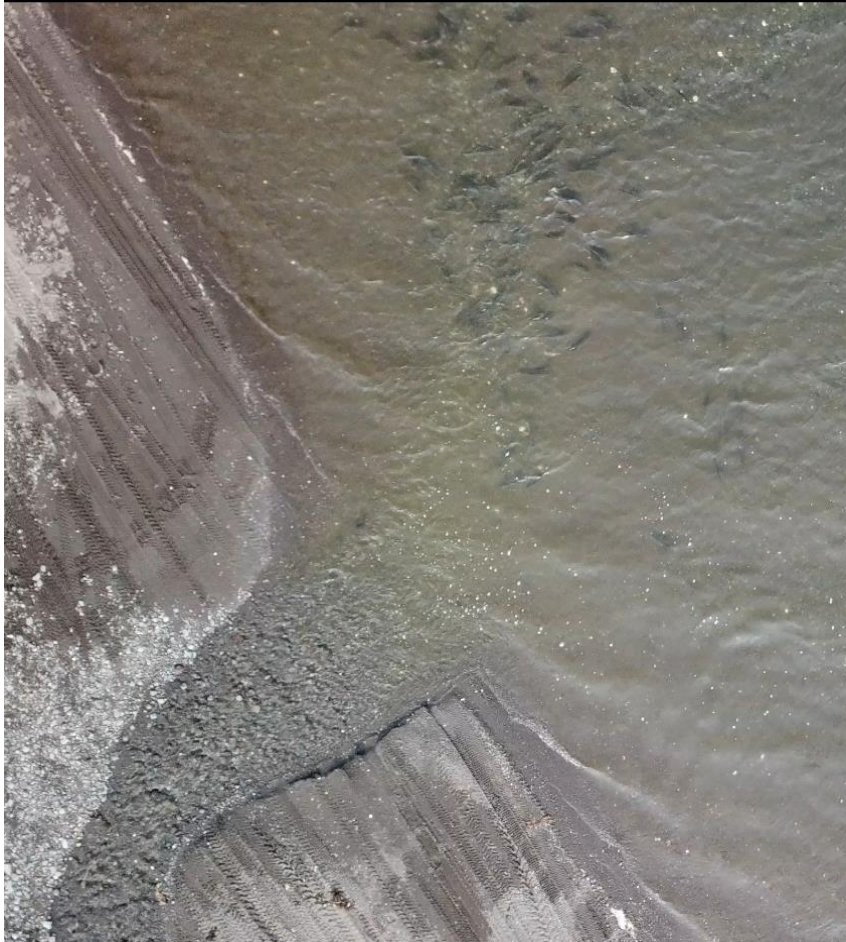
FCR 23-14



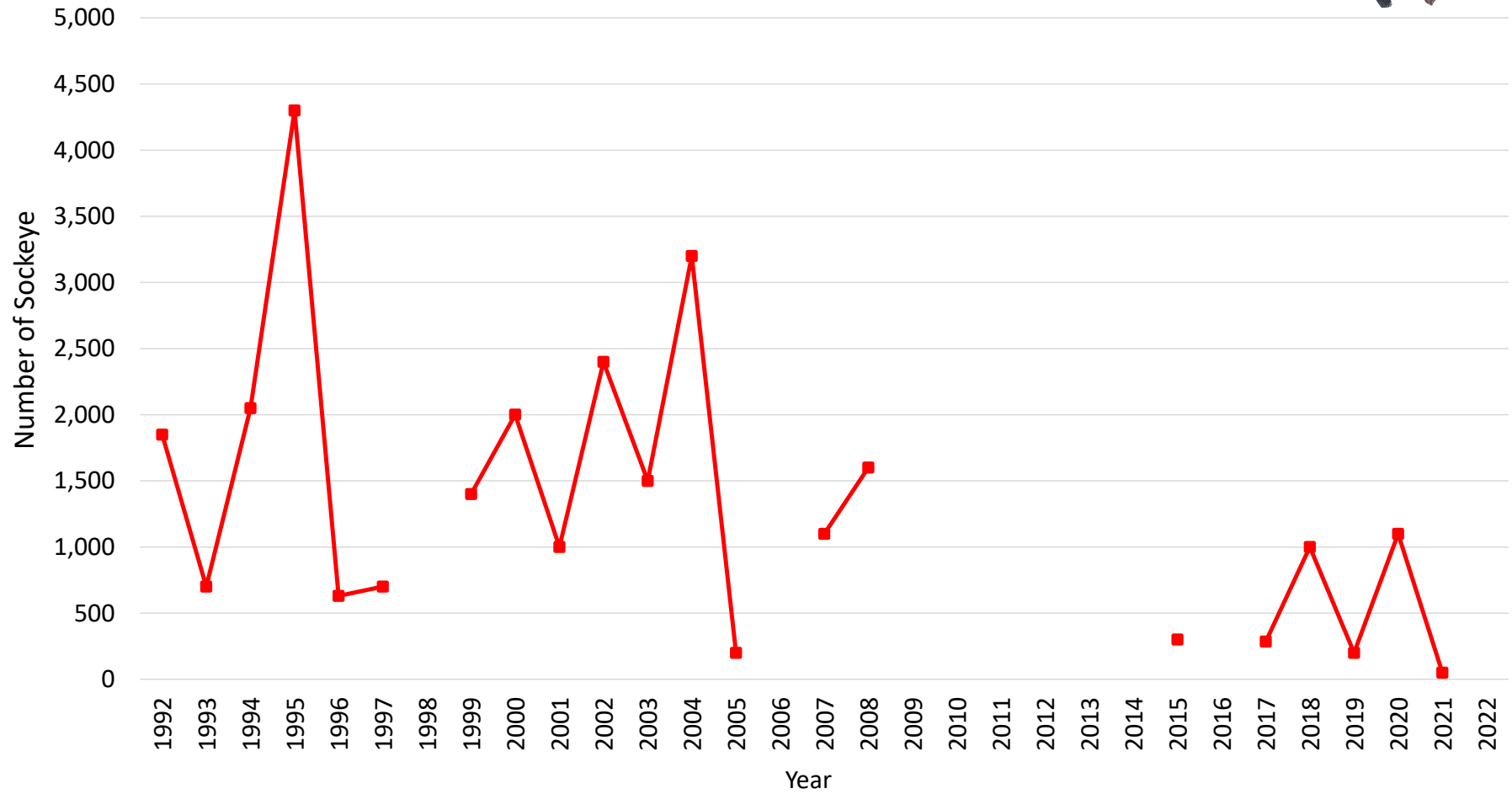
Trout Creek Escapement 1990-2022



Swan Lake



Total Kinzarof Lagoon Sockeye Escapement 1992-2022



Recent Subsistence Actions Taken by ADF&G

- Reduced Swan Lake closure from 500 to 100 yards to increase space available for subsistence gillnetting of salmon
- Submitted a proposal to the Board of Fish to remove the link between non-commercial fishermen and subsistence users in order to permanently open more waters to subsistence harvest
- Provided regulatory framework to local subsistence users submitting proposals to the Alaska Board of Fish
- Worked with subsistence users from Unalaska to allow charter boats to transport subsistence fishers to waters that are difficult to access
- Prioritized late season escapement surveys for 2022

Alaska Peninsula / Aleutian Island / Chignik Finfish - Board of Fish Meeting

- February 20-25, 2023
- Comment due date: January 30, 2023
- Anchorage – Dena'ina Center

Any questions?
Tyler.Lawson@Alaska.Gov



Photo: Mark Patterson