



Forest Service
U.S. DEPARTMENT OF AGRICULTURE

USDA Forest Service Program Overview in Hawaii and the U.S.-Affiliated Pacific Islands

Susan Cordell – Pacific Southwest Research Station,
Institute of Pacific Islands Forestry
susan.cordell@usda.gov

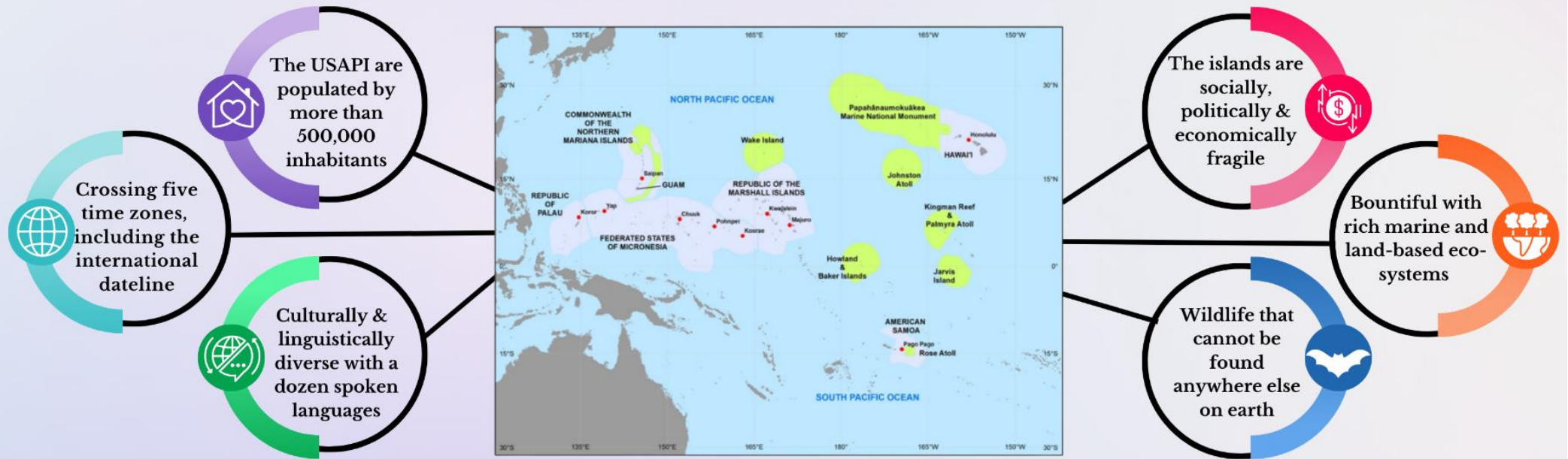
&

Sherry Hazelhurst – Pacific Southwest Region,
State, Private & Tribal Forestry
sherry.hazelhurst@usda.gov

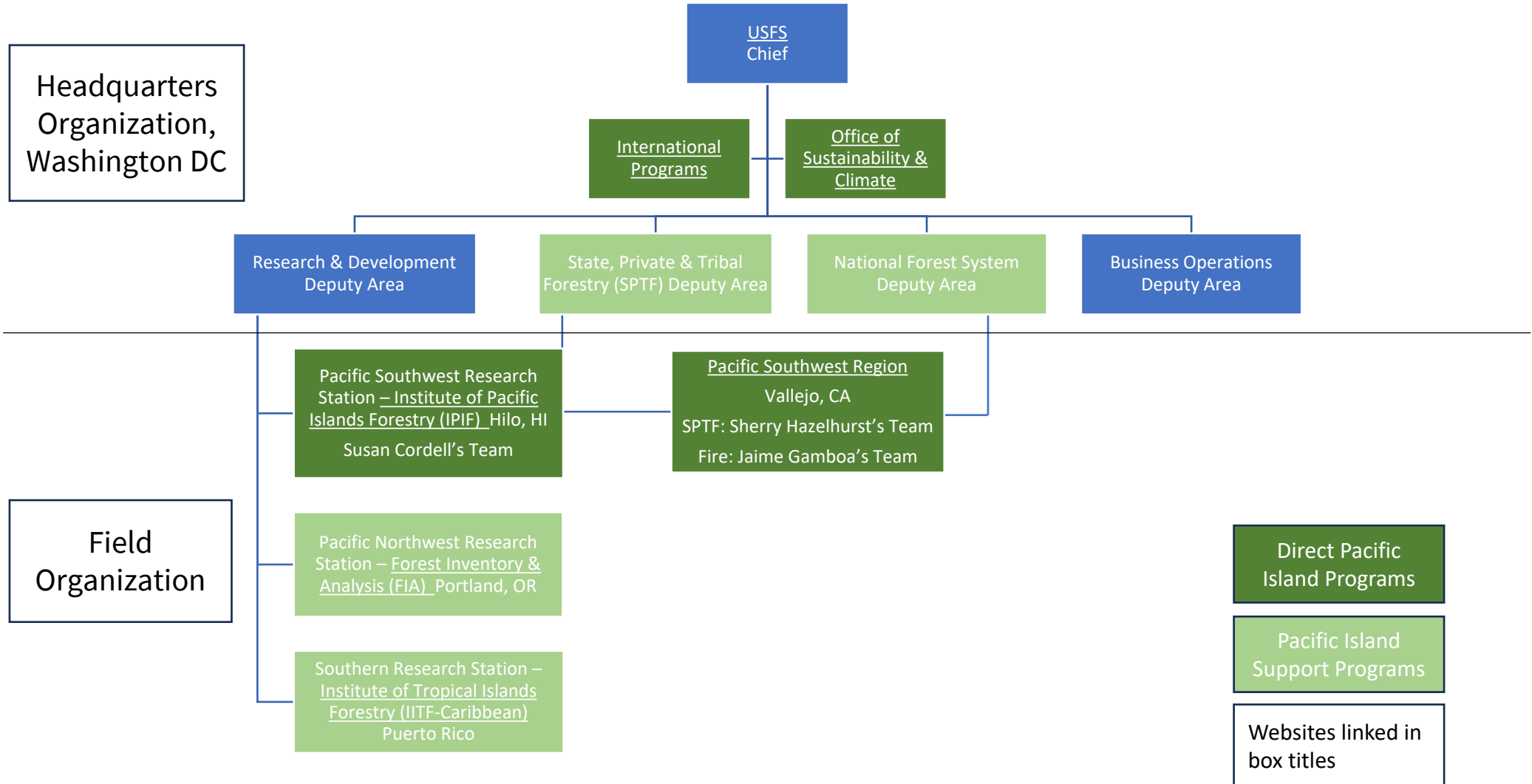


Area of Responsibility

The USFS works across deputy areas (Research and Development), State, Private Forestry and International programs to address the needs of Pacific Island Nations through capacity building, supporting partnerships, effective demonstrations, and professional development



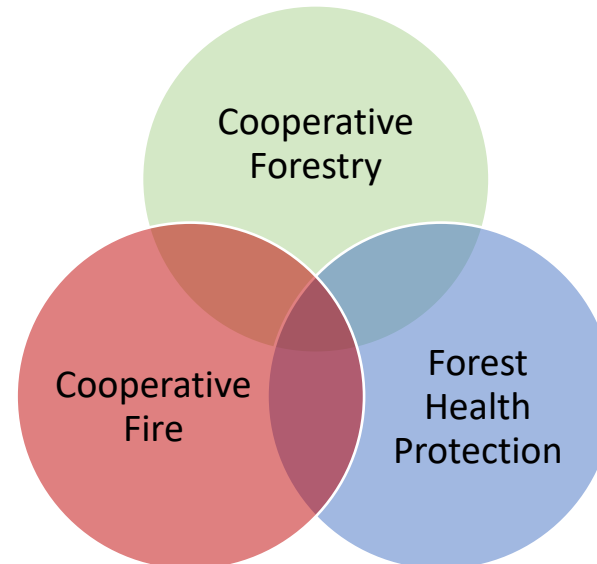
US Forest Service Organizational Overview



Regional State, Private & Tribal Forestry

- Mission: Connecting People to Conserve Forests
- Authorities: Cooperative Forestry Assistance Act of 1978, as amended
- Average annual funding to Pacific Region (HI/USAPI): \$7M
- Grant & Technical Assistance Programs:

State Fire Assistance, Volunteer Fire Assistance, Firefighter Property Program, Federal Excess Personal Property, Community Wildfire Defense Grants



Forest Legacy, Forest Stewardship, Urban & Community Forestry, Wood & Biomass Utilization, Climate Change, Conservation Finance, Landscape Scale Restoration

Entomology, Pathology, Invasive Plants, Pesticides, Monitoring, Aerial Survey, GIS



Institute of Pacific Islands Forestry, Hilo Hawaii

- Serving Hawaii and US Affiliated Pacific Island land managers since the 1950's
- Officially established as an Institute (together with IITF) in 1990 as part of the Farm Bill
- 20 FS Permanent Research Staff; 8 Scientists; 7 research support staff; 1 Science Delivery Specialist; 4 admin support staff: 115 collaborators and tenants including R5 S&PF, FIA, and IP
- Annual budget ~\$1-1.5 million



IPIF Program

Research Themes

1. Science to Understand and Address Landscape Change
2. Science Driven Strategies to Promote Diverse and Productive Terrestrial and Aquatic Systems
3. Island Biocultural Science and Stewardship



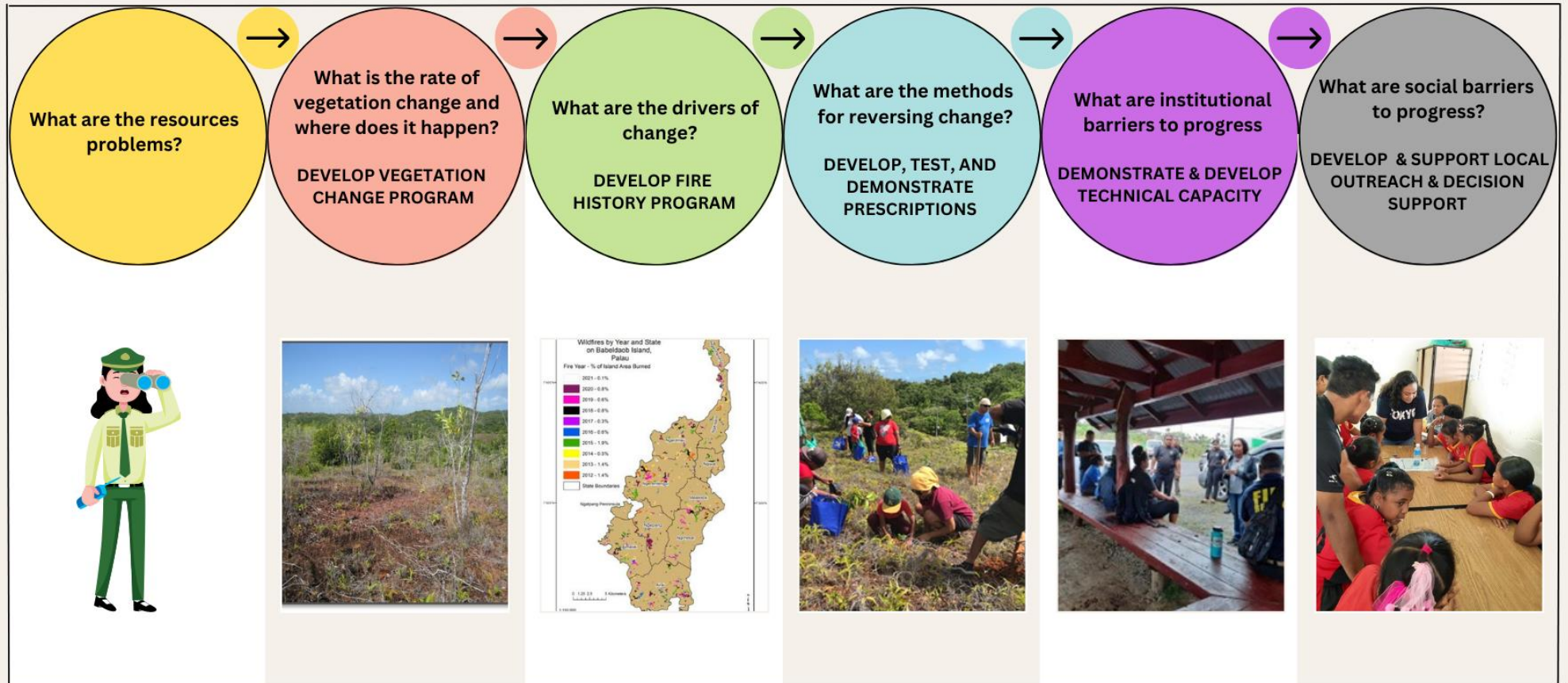
How We Work Together

- ***Personal Relationships***
- Core Programs
- USFS Deputy Area priority alignment
- Island agencies and partners
- Interagency Coordination
- Network of networks



Our Approach

DIVERSE AND EFFECTIVE PARTNERSHIPS



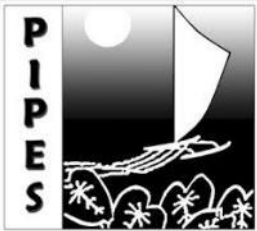
Focus Areas within the U.S.-Affiliated Pacific Islands

1. Climate Change
2. Invasive Species
3. Fire
4. Forest Recovery with Nature-Based Solutions
5. Agroforestry
6. Mentorship/Capacity Building

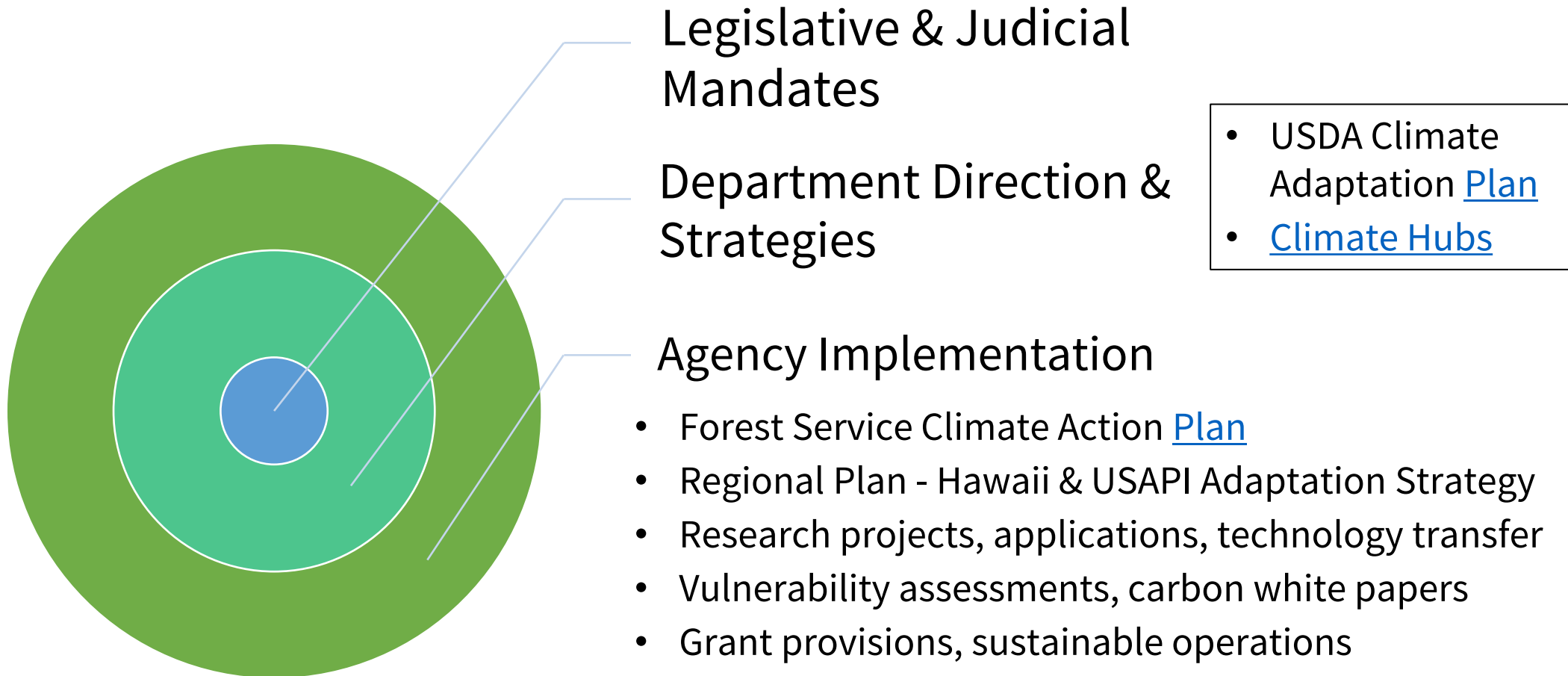




Our Partners



USFS Role in Climate Change



* New USFS-funded Positions: Climate Extension w/USDA & NREM; Micronesia Regional Invasive Species Committee Coordinator, Guam; and Climate & Fire Ecology Specialist, Hilo or Honolulu

Common Climate Adaptation Themes across HI & USAPI Forests

- *Funding/Resources*
- *Collaboration and Knowledge Exchange*
- *Modeling/Cataloguing*
- *Species Conservation/Invasives Management*
- *Fire Prevention*



Examples of Climate Adaptation Strategies for Pacific Islands

PSW & R5 are:

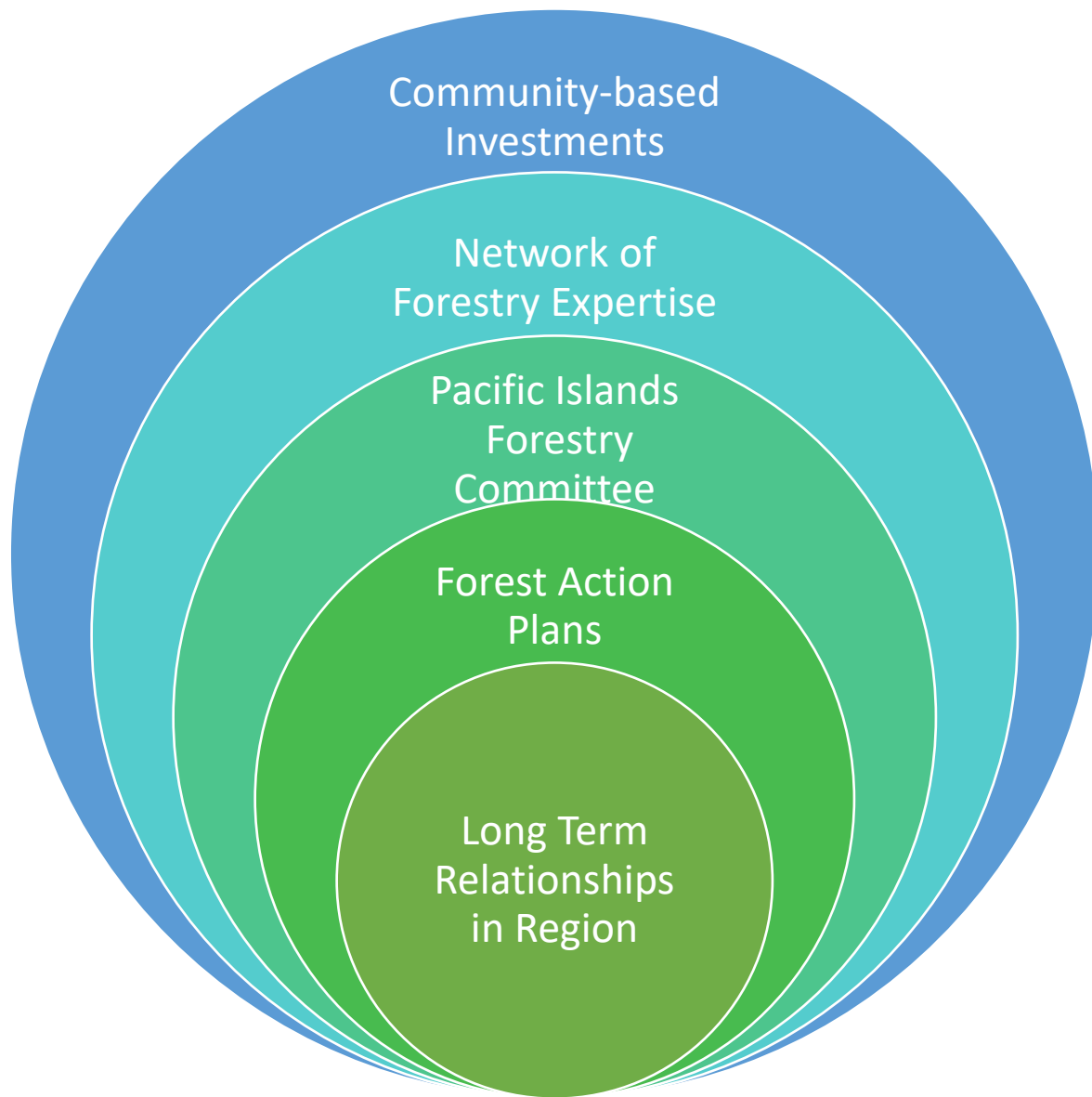
- Investigating sea level rise and storm surge impacts and mangrove management
- Working on key wildfire issues – coordination, fire prevention, fire mapping, community wildfire protection plans, drought
- Prioritizing invasive species control
- Addressing forest and Agroforestry health (disease, pathogens, insects, resistance)
- Developing Decision Support tools to guide and prioritize protection and management strategies



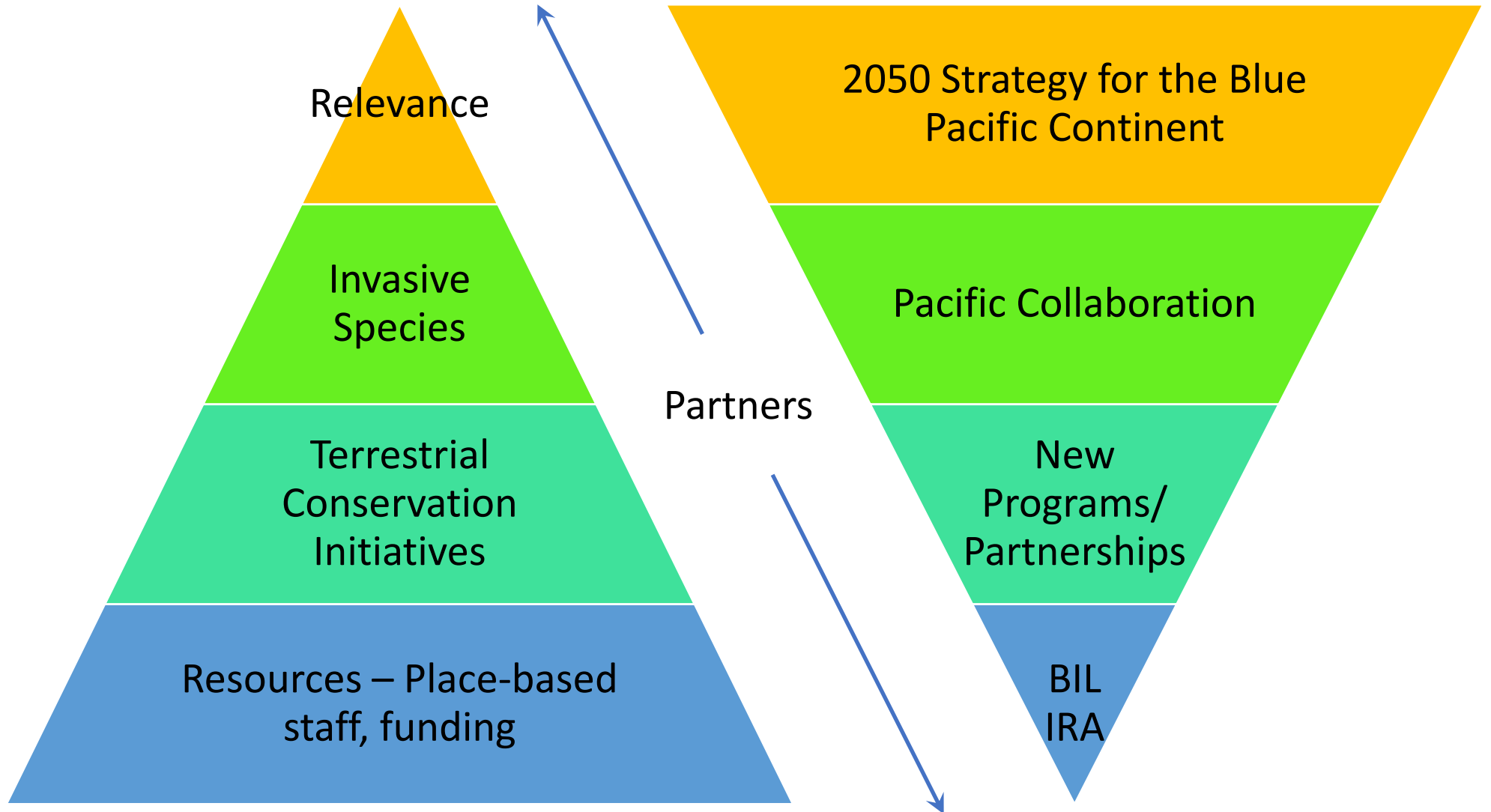
USFS Strengths

Example Resources

- [Forest Action Plans](#)
- [Forest GEO](#)
- [Forest Health Protection](#)
- [Forest Inventory & Analysis](#)
- [Hawai'i Urban Tree Canopy Viewer](#)
- [Pacific Fire Exchange](#)
 - Fire [Maps/Curricula](#)
- [Pacific Islands Forestry Committee](#)



Challenges & Opportunities



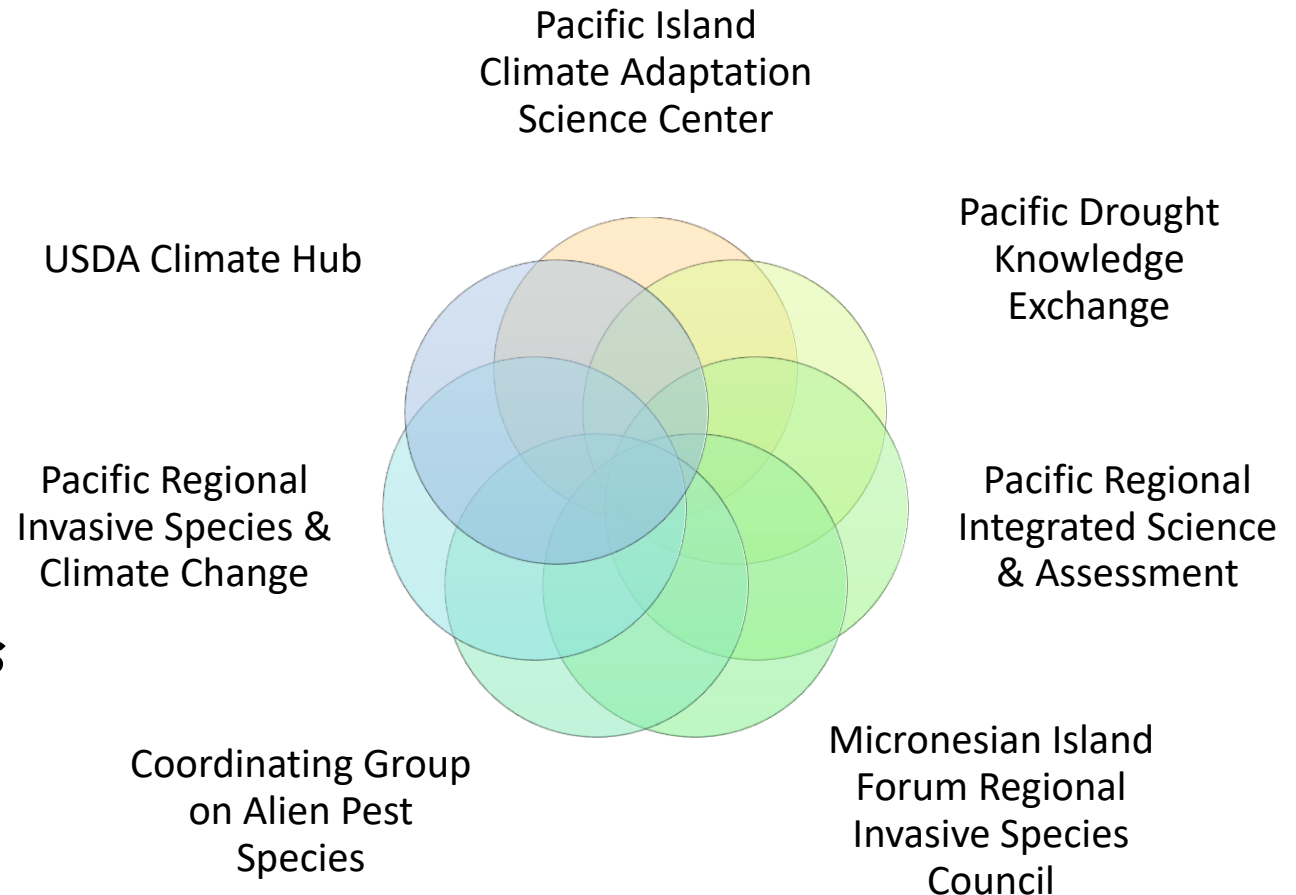
Opportunity: Connecting the Pacific Climate Change Organizations

Where are Intersections?

- Purpose
- Members
- Programs & Projects

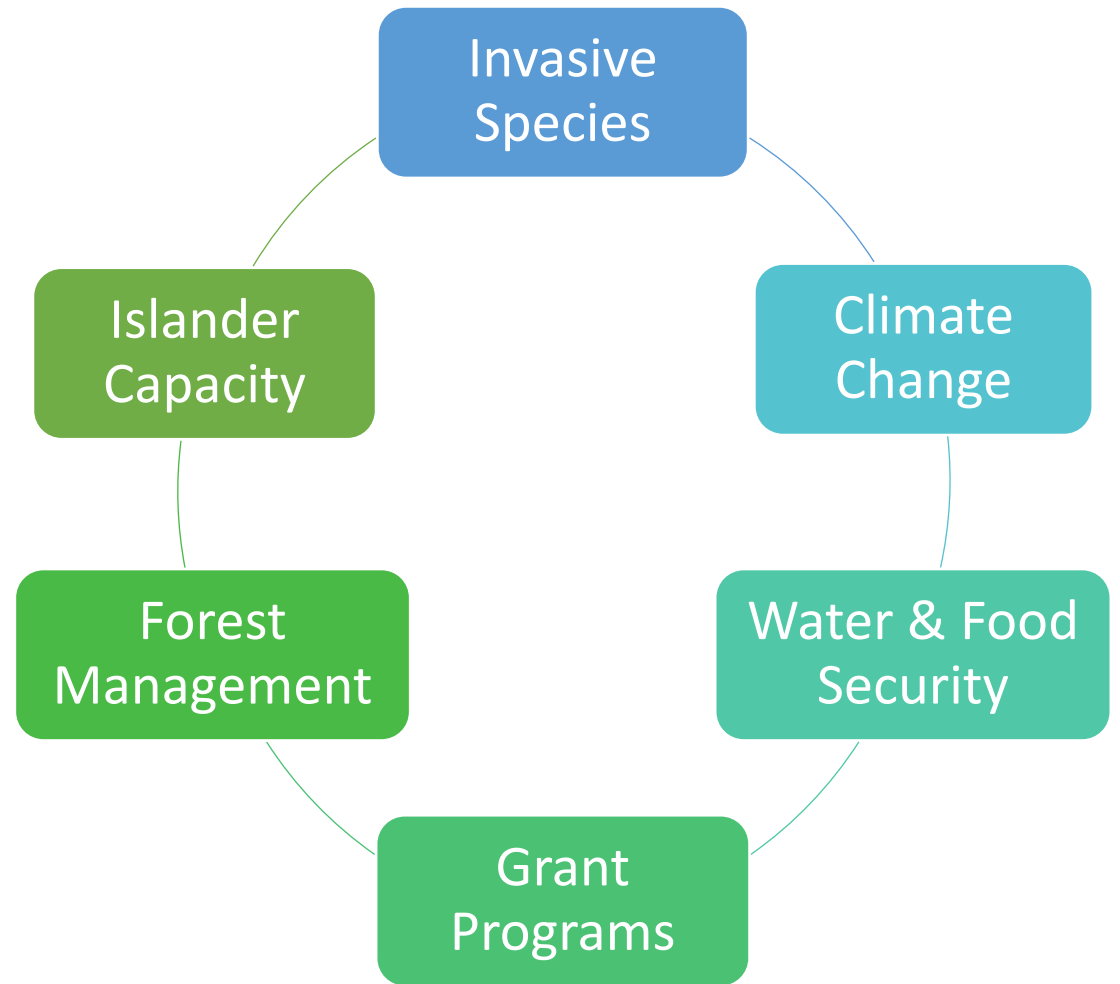
Intersections = Opportunities

- Efficiency
- Leveraging Resources
- More products to users



What Can We Do Together?

- How can we coordinate more effectively?
- How can we better understand and prioritize knowledge gaps?
- How can we reduce redundancy across organizations?





Forest Service
U.S. DEPARTMENT OF AGRICULTURE

USDA is an equal opportunity provider, employer, and lender.