



July 31, 2020
Monroe County Mayor Mitch Ingram
105 College Street South
Madisonville, TN 37354

Dear Mr. Secretary:

On behalf of the Monroe County Board of Commissioners, we appreciate the opportunity to provide Monroe County's proposed options for the upcoming creation of the National Garden of American Heroes. Here are our recommendations for the presented requests:

1. A large portion of Monroe County hosts the Cherokee National Forest - Tellico District. The Cherokee National Forest is a picturesque area full of history and natural beauty, including the Cherohala Skyway National Scenic Byway. As the Executive Order from President Donald Trump indicated as a preference, it is also land that is already in federal ownership. The areas we have identified inside the Cherokee National Forest are approximately 230 miles to the Tennessee State Capitol in Nashville, TN, 91 miles to Knoxville, TN, 99 miles to Chattanooga, TN, and 166 miles to Asheville, NC. This places our recommended locations near several major population centers, but both locations are in areas that will not cause significant disruption to the local community. Option A: Hobbs Hole Branch Area is located at 35°21'18.017"N 84°9'11.286"W and Option B: Indian Boundary Lake Area is located at 35°22'53.378"N 84°7'20.894"W.

In addition to the attached topographic maps of both site areas, you can also virtually view the sites through Google Earth by selecting the "present" option [here](#).

Historical significance of the site areas:

The Cherokee National Forest - The Cherokee National Forest is a 650,000-acre forest and is the largest tract of public land in Tennessee. Named for the Cherokee Nation of Native American Indians who once lived and roamed the woodlands, it adjoins other national forests in Virginia, North Carolina and Georgia. The Cherokee National Forest was established June 14, 1920, from land owned by lumber companies who clear-cut the area and left it with watershed and top soil erosion. Trees were planted by forest service workers and now visitors from all across the US come to explore the more than 600 miles of trails including 150 miles of the Appalachian National Scenic Trail, hundreds of miles of cold water streams, 7 whitewater rivers, 3 large lakes managed by the Tennessee Valley Authority, 11 congressionally designated Wilderness areas, 30 developed campgrounds, 45 developed day-use sites and the abundant populations of wildlife. The national forest provides habitat for 43 species of mammals, 154 species of fish, 55 species of amphibians and 262 species of birds.

The Cherohala Skyway National Scenic Byway - The Cherohala Skyway started as a peaceful protest to promote the need for a highway to join the neighboring states of Tennessee and North Carolina. The idea of a wagon train became reality on July 4th, 1958, when sixty-seven wagons and over three hundred horseback riders made the thirty-mile trek from Tellico Plains, TN to Murphy, NC, across a mountain road "only fit for wagons." This 4th of July tradition lasted for thirty years until the Cherohala Skyway was near completion. The Skyway officially opened in 1996 and is now a National Scenic Byway traveled by approximately 2 million visitors annually.



2. We do not have any statues or monuments to donate or loan toward this effort, but we would be honored to be selected as the home of the National Garden of American Heroes.
3. In addition to the 31 individuals listed in the Executive Order, we would like to submit Harry T. Burn for consideration for inclusion in the National Garden of American Heroes.

Tennessee State Representative for McMinn County, TN, Harry T. Burn, cast the one vote in August of 1920 that gave women across the United States the right to vote.

The Nineteen Amendment, regarding female suffrage, was proposed by Congress on June 4, 1919. The amendment could not become law without the ratification of a minimum thirty-six of the forty-eight states. By the summer of 1920, thirty-five of the forty-eight states had ratified the amendment, with a further four states called upon to hold legislative voting sessions on the issue. Three of the states refused to call special sessions, but Tennessee agreed to do so. This session was called to meet in August of 1920.

Burn had originally intended to vote for the amendment. After being pressured by party leaders and receiving misleading telegrams from his constituents telling him his district was overwhelmingly opposed to women's suffrage, he began to side with the Anti-Suffragists. However, a letter from his mother asking him to vote in favor of the amendment helped to change his mind.

After much debating and argument, the result of the vote was 48-48. After Burn voted twice to "table" the amendment, the house speaker called for a vote on the "merits." Burn followed his mother's advice and voted "aye." His vote broke the tie in favor of ratifying the amendment and he forever changed the future for all American women across the nation. After leaving office, Mr. Burn opened a law office in Sweetwater, Monroe County, TN.

We appreciate the opportunity to provide our recommendations for the National Garden of American Heroes project. Thank you for your consideration.

Thank You,

Mitch Ingram

Monroe County Mayor

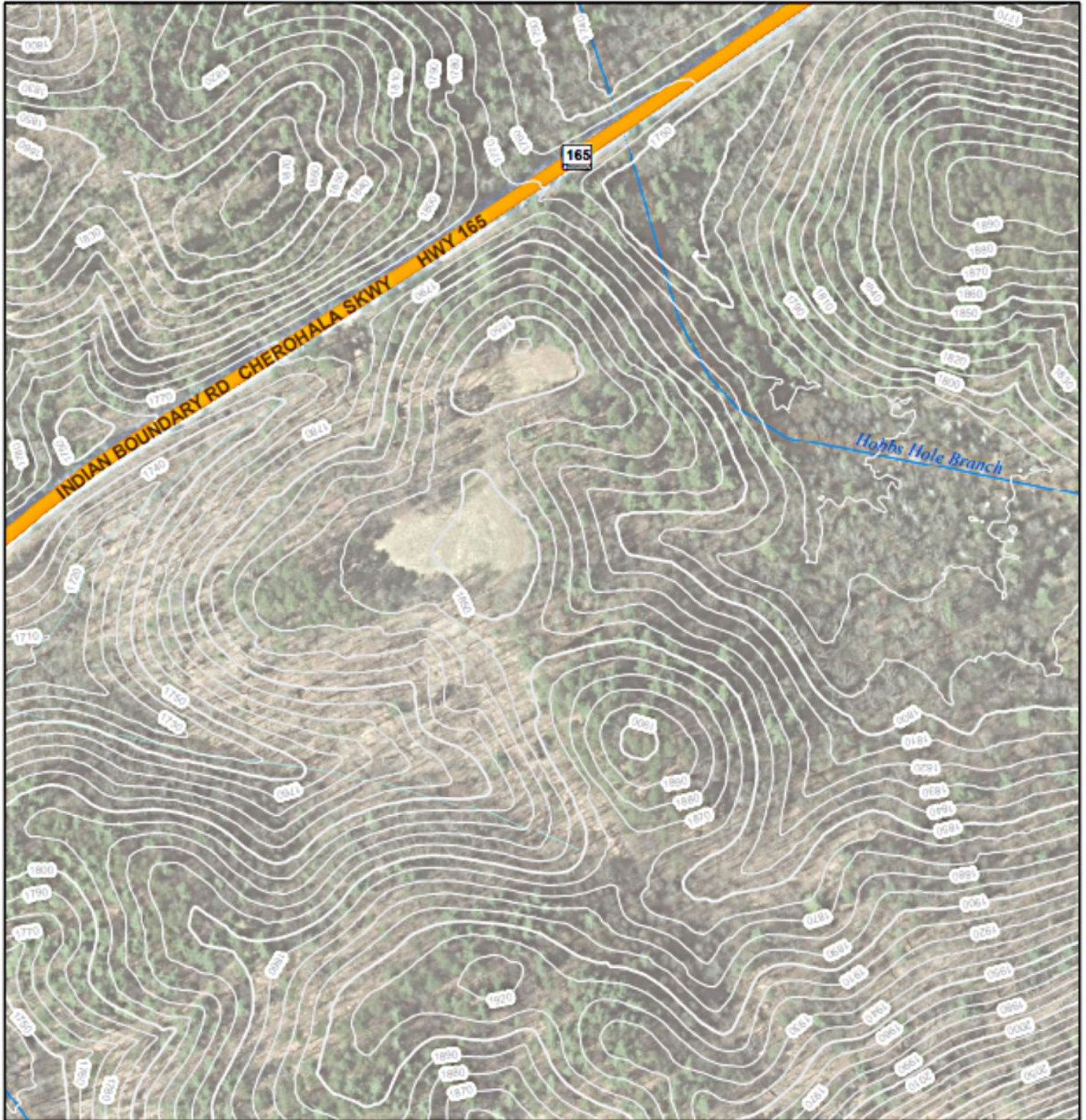
Office: 423.442.3981

E-mail: mitch.ingram@monroetn.com



Cherokee National Forest Monroe County, Tennessee, Option A

1:2,400

1 inch = 200 feet



- | | |
|----------------------------------------------------------------------------------------------------|---------------------------------------------------------------------------------------------------------------|
|  Cherokee Skyway |  Stream Named |
|  Road |  Stream Named, Culvert |
|  Other |  Stream Tributary |
|  Driveway |  Stream Tributary, Culvert |
|  4WD |  Lakes, Ponds |

- | |
|---------------------------------------------------------------------------------------------------|
|  10 FT Contour |
|  50 FT Contour |

0 100 200 Feet
Contour Interval = 10 FT



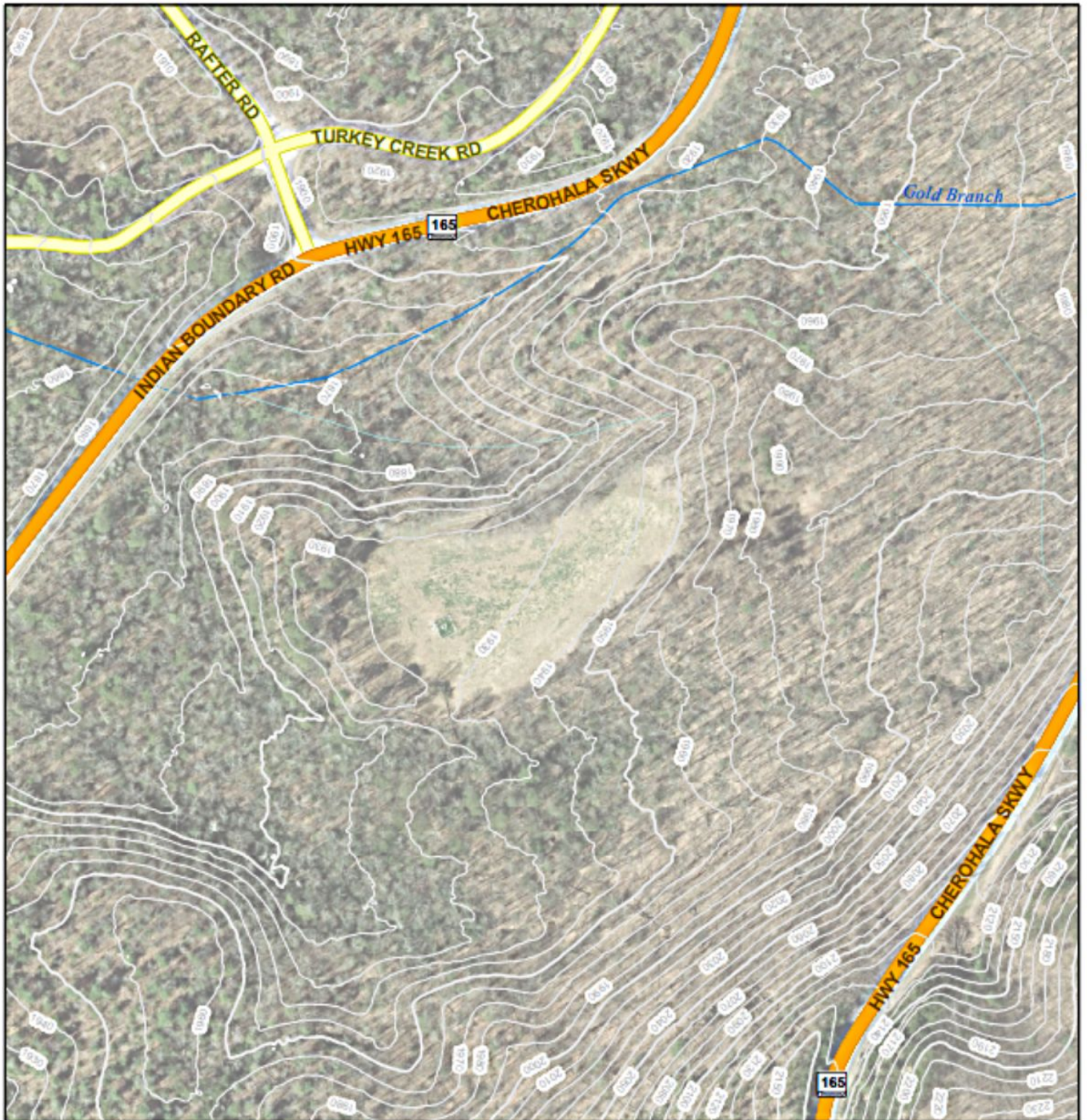
Prepared by:
Monroe County Geographic Information System (GIS)
331 College Street South, Suite 9
Madisonville, TN 37354
(423) 261-4219 <http://monocounty.com/>

This map is a graphic representation of a portion of the earth's surface for planning purposes only. All boundary lines are approximate and in no way shall be considered legal boundary definitions. This map cannot be substituted for an actual survey. A proper survey should be completed to determine legal boundaries and actual location of objects.

Cherokee National Forest Monroe County, Tennessee, Option B

1:2,400

1 inch = 200 feet



<ul style="list-style-type: none"> Cherokee Skyway Road Other Driveway 4WD 	<ul style="list-style-type: none"> Stream Named Stream Named, Culvert Stream Tributary Stream Tributary, Culvert Lakes, Ponds 	<ul style="list-style-type: none"> 10 FT Contour 50 FT Contour 	<div style="text-align: right;"> <p>0 100 200 Feet</p> <p>Contour Interval = 10 FT</p> </div> <div style="text-align: center; margin-top: 10px;"> <p>N</p> </div>
------------------------------------------------------------------------------------------------------------------------------------------------------------------------------------------------------------------------------------------------------------------------------------------------------------------------------------------------------------------------------------------------------------------------------------------------------------------------------------------------------------------------------------------------------------------------------------------------------------------------------------------------------------------------------------------------------------------------------	----------------------------------------------------------------------------------------------------------------------------------------------------------------------------------------------------------------------------------------------------------------------------------------------------------------------------------------------------------------------------------------------------------------------------------------------------------------------------------------------------------------------------------------------------------------------------------------------------------------------------------------------------------------------------------------------------------------------------------------------------------------------	-----------------------------------------------------------------------------------------------------------------------------------------------------------------------------------------------------------------------------------------------------------------------------------------------------------------	-------------------------------------------------------------------------------------------------------------------------------------------------------------------------

Prepared by:
Monroe County Geographic Information System (GIS)
301 College Street South, Suite 9
Madisonville, TN 37354
(615) 261-4276 <http://gis.mcisocounty.com/>

This map is a graphic representation of a portion of the earth's surface for planning purposes only. All boundary lines are approximate and in no way shall be considered legal boundary definitions. This map cannot be substituted for an actual survey. A proper survey should be completed to determine legal boundaries and acts or location of objects.