

Silver Creek Watershed Park City, Utah

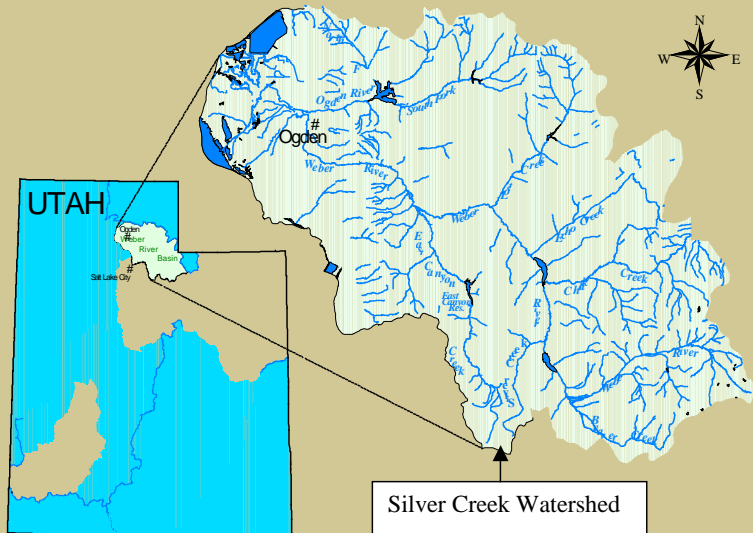
CERCLA Remedial/NRDA Coordination



Park City, Utah

- Silver Creek is the water supply for 7,500 people

Silver Creek Watershed Location Within the Weber River Basin, Utah



Silver Creek Watershed

- Area - 20,200 acres
- 3A cold water fishery
- Historic Mining 1875-1967

16 million tons of ore

10 mills operating along
banks

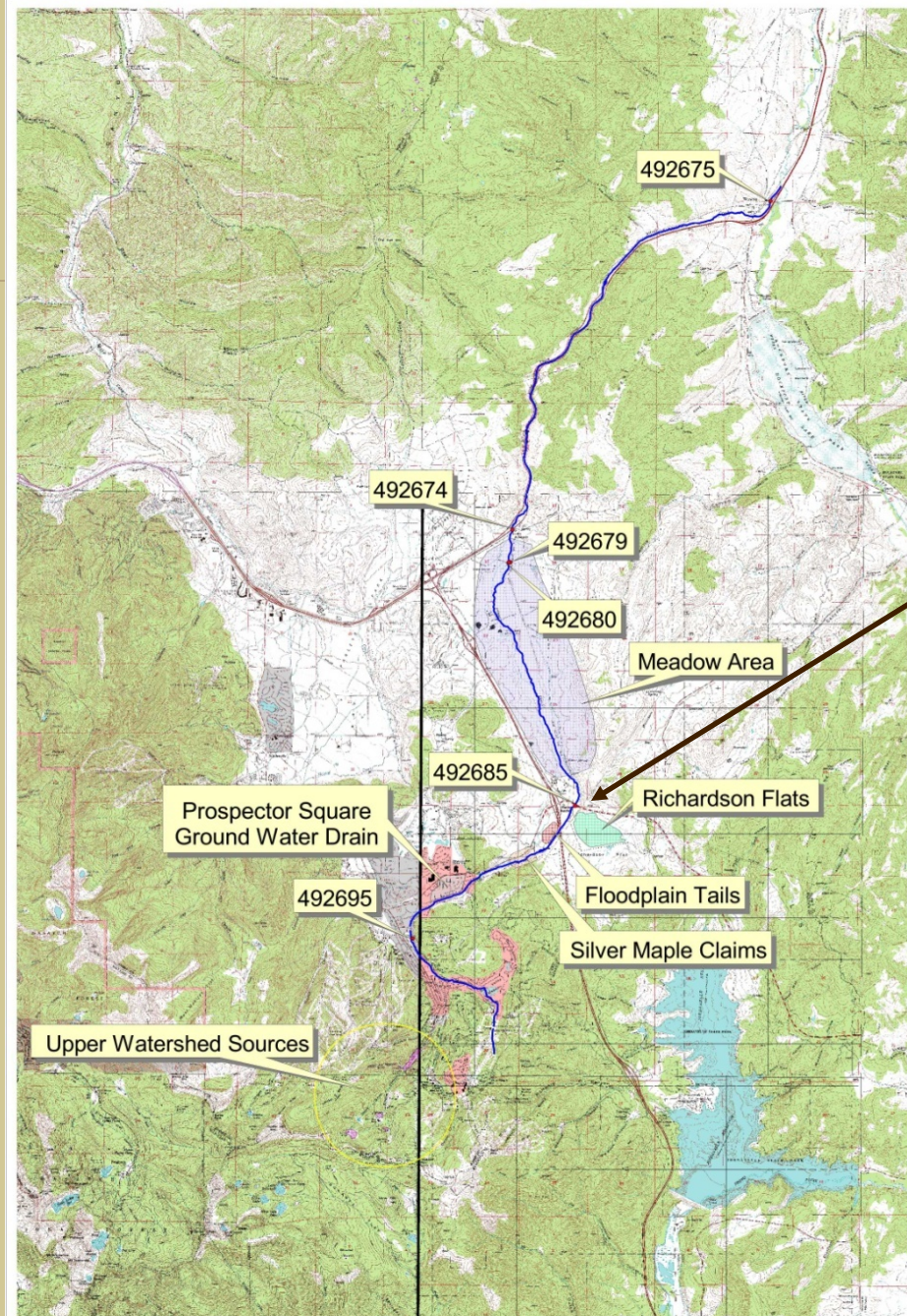


Silver Creek Watershed

- 1984 EPA attempted NPL Listing of Empire Canyon
- 1986 EPA abandoned listing efforts
- 1988/1993 Richardson Flats proposed for listing
- 1998 Silver Creek listed on CWA 303(d) List
- 1998 Six Mining Sites CERCLIS Listed
- 1999 EPA and Stakeholders “Collaborative Watershed Investigation”
- 2003 EPA Non-Time Critical Removal
- 2005 Richardson Flats ROD
 - (PRP Voluntary Actions)

BACKGROUND

- 1998 CERCLIS Listed Sites
 - Empire Canyon
 - Prospector Square
 - Silver Maple Claims
 - Richardson Flats
 - Lower Silver Creek



2

0

2 Miles

SILVER CREEK TMDL

Richardson Flat



Richardson Flat

➤ Remedial Program

➤ Voluntary AOCs

➤ RI/FS

➤ ROD (2005)

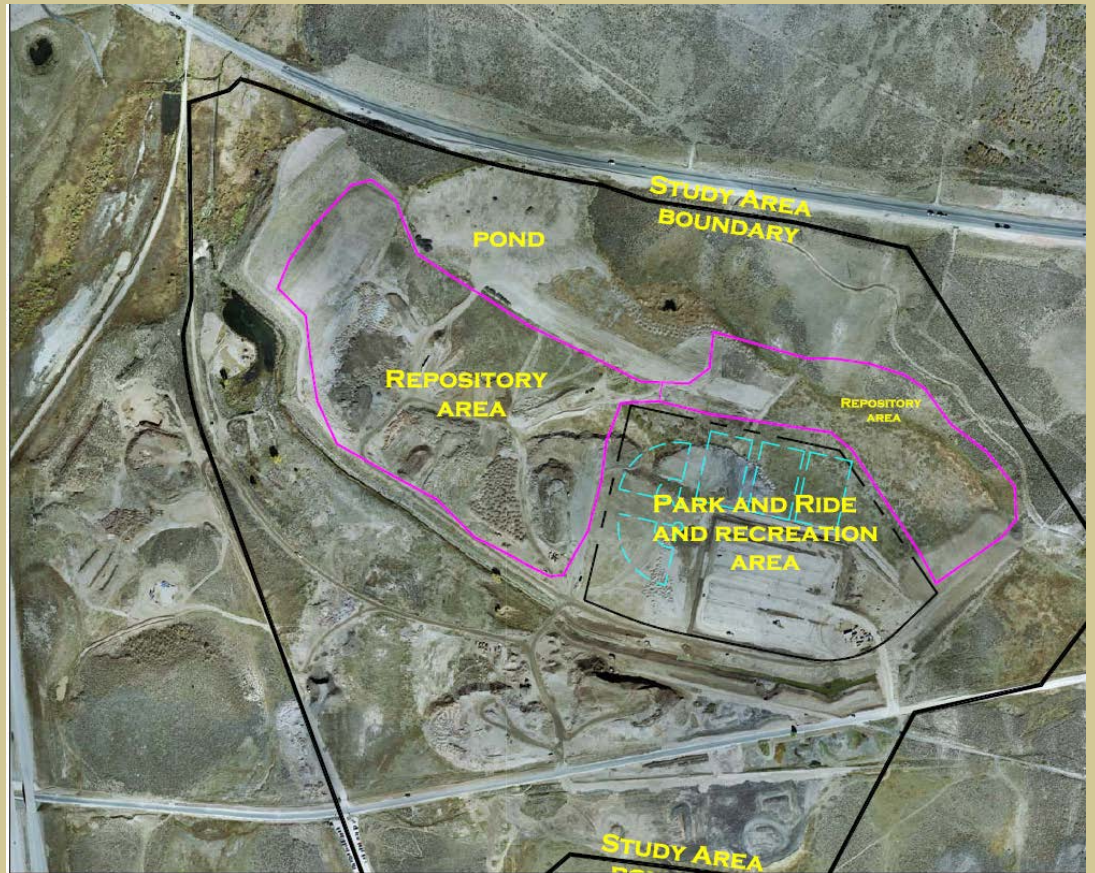
➤ RD/RA

➤ Repository

➤ Tailings consolidation

➤ Diversion Ditch

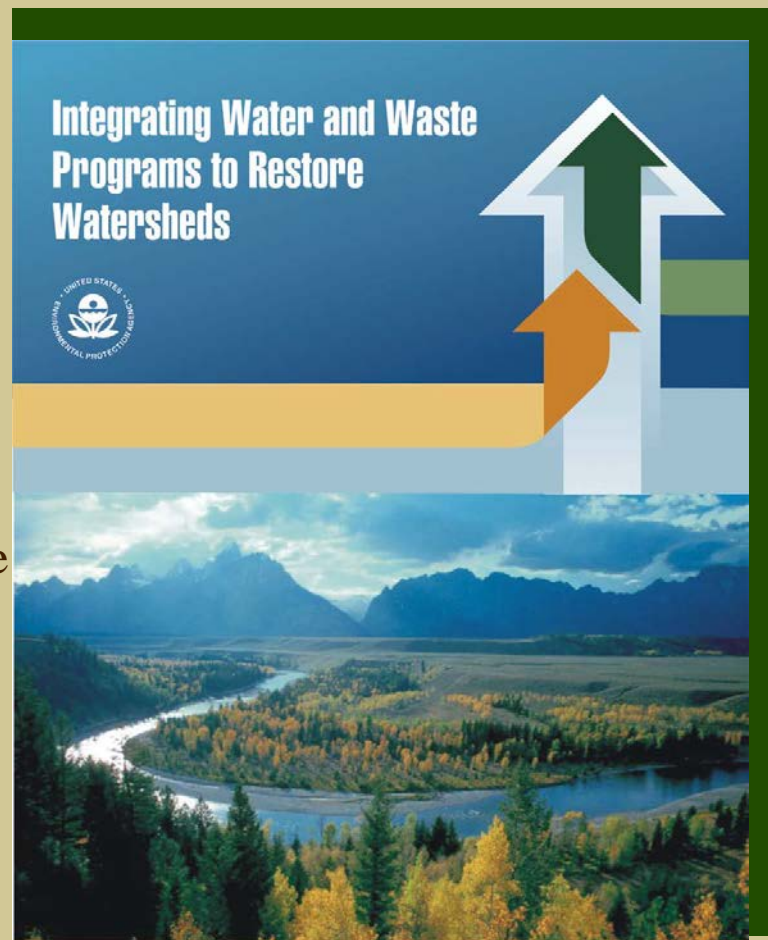
➤ NRDA claim



Integrated Watershed Approach

<http://www.epa.gov/superfund/resources/pdfs/cross-program.pdf>

- Cross-programmatic approach to assessment and cleanup
 - Combining Limited Resources
 - Information
 - People
 - Dollars
- Silver Creek Watershed
 - CERCLIS, NPL “Alternative” Site
 - Impaired surface water
 - Forward Thinking PRP - UPCM
 - Local authority



EPA Project Objectives

- Coordination in assessment criteria across agencies (Site Assessment, RI, NRDA)
 - Biological information exchange between UAA, Risk Assessment and NRDA efforts can benefit all programs.
- NCP requires that EPA notify and coordinate with Trustees throughout the Superfund process
- EPA guidance encourages NRDA activities to occur concurrently with CERCLA or OPA response actions
- Attempts should be made to coordinate the remediation activities with the restoration goals.
- Identifying proposed restoration and redevelopment tasks during the RI/FS stage can allow for synchronization of NRDA restoration activities and remedial tasks.