



VISION OF TRUST MANAGEMENT MODEL, RESPONSIBILITY AND REFORM

**Chief Phyliss J. Anderson
Mississippi Band of Choctaw Indians**

APRIL 29, 2013

Secretarial Commission on Indian Trust Administration and Reform

MBCI Overview



- Only federally recognized tribe in Mississippi, Tribal Constitution ratified in 1945
- 10,500 + enrolled members, half under age of 25
- 35,500 + acres trust land in Mississippi and Tennessee
- 8 tribal communities
- Democratically-elected Government



MBCI Overview



- 2 branches of Government – Legislative and Executive
- 1 Tribal Chief, 17 member Tribal Council
- Sophisticated Tribal Court System
- 4th Largest Employer in Mississippi
- \$1.365 Billion state impact

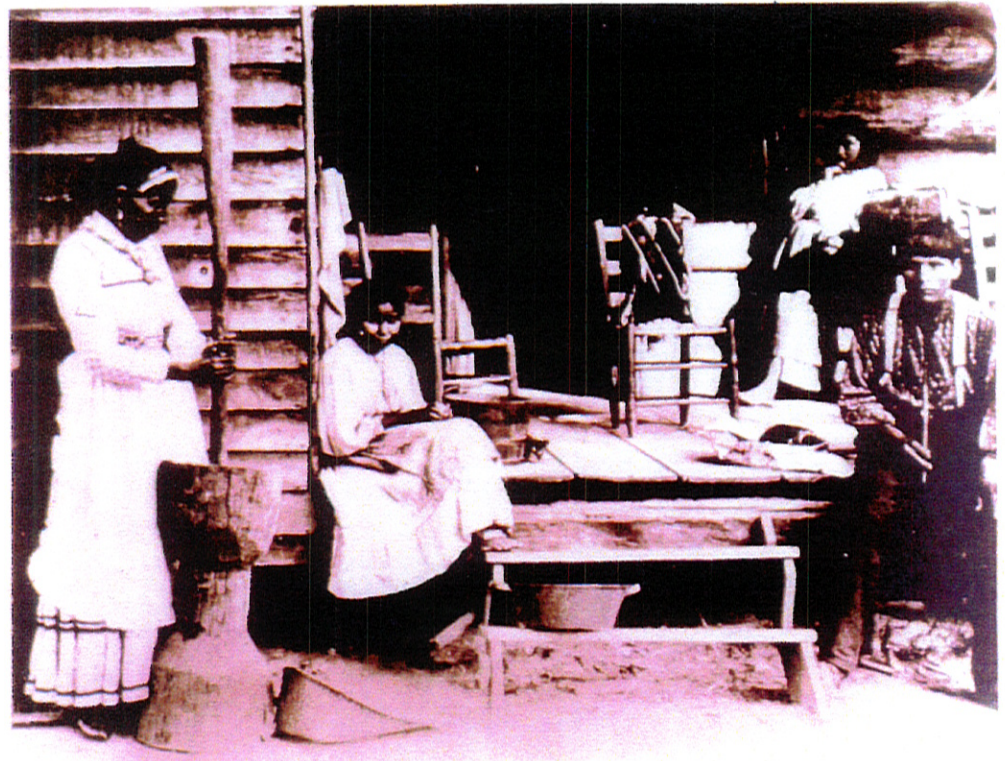


MBCI Overview



At our starting point in 1945:

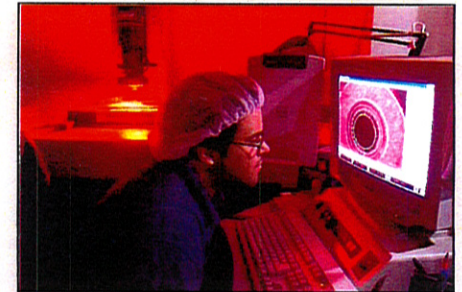
- 80% unemployment
- Shortest life expectancy
- Worst infant mortality rate
- No access to high school education



Choctaw Business Overview



- Opened 1st business in 1969
- 15 business divisions
- Manufacturing, health care, laboratory services, construction, real estate development
- Customer base includes: McDonald's, Pepsi, NASA, Club Car, Department of Defense, among others



Application of Trust Responsibility



- Primary Agency Charged with Trust Responsibility - Department of the Interior
- Recent Focus – improving trust functions regarding reservation lands, natural resources and the management of the tribal allotment revenues derived from resources (focus primarily driven by *Cobell* Litigation and Settlement)

Application of Trust Responsibility



- United States Trust Responsibility to the Tribes not limited to land management
- Responsibilities include:
 - Performance of core government programs
 - Performance services for tribes
 - Facilitation of tribal self-determination as tribes assume more operational responsibility

Create BIA Accountability



Real-Life Illustration:

Patriot Ford Dealership – Carthage, Mississippi

Create BIA Accountability



- Streamline the allocation of management responsibility over trust assets
- Adequately train personnel involved in trust processes and their role in efficient implementation
- Establish an expectation of greater accountability
- Educate personnel on the history and background of the government's trust responsibility
- Strengthen the government-to-government communication and relationship by involving tribes in the BIA education and accountability process on trust responsibility

Prohibit BIA's Imposition of Unlawful Requirements



Real-Life Illustration:
Choctaw Tribal Schools
Native Star Reporting
NWEA MAP System

Prohibit BIA's Imposition of Unlawful Requirements



- Accept tribes capabilities in realizing self-determination
- Give tribes the authority to operate schools with bare minimum federal oversight as Congress has expressly recognized
- Lesson the undue and unnecessary reporting burdens imposed on tribes

Correct BIA Inefficiencies



Real-Life Illustration:

Jackson County, Mississippi

Henning, Tennessee

Correct BIA Inefficiencies



- Eliminate repetitious activity
- Create better internal controls
- Develop a mechanism for addressing grievances
- Provide proper training
- Know your tribes individually
- Develop and implement a Code of Ethics and enforce them



Yakoki!