

# Donlin Gold Project Update



**DONLIN**  
**GOLD**

Presentation for the Yukon-Kuskokwim Regional Advisory Committee  
October 28, 2022

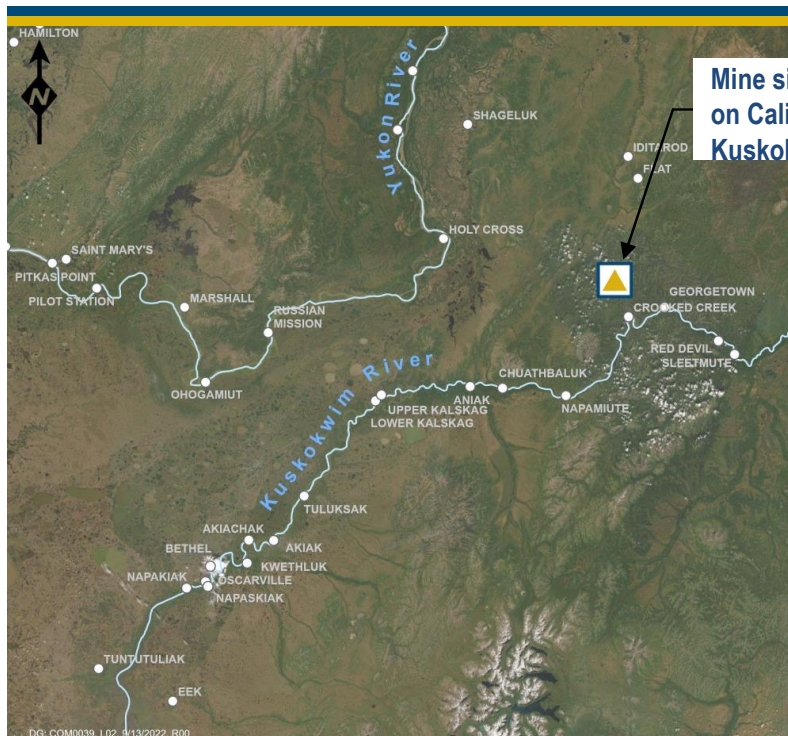
# Agenda



- High level presentation on the following subjects:
  - Barging plans and impacts
  - Smelt studies
  - Donlin Gold Advisory and Technical Review and Oversight Committee (DATROC)

Donlin is conducting multi-year studies to increase our knowledge of the river system. By doing so, we can make informed decisions about how to minimize potential impacts from our barging operations, with input from key stakeholders.

# About the Project



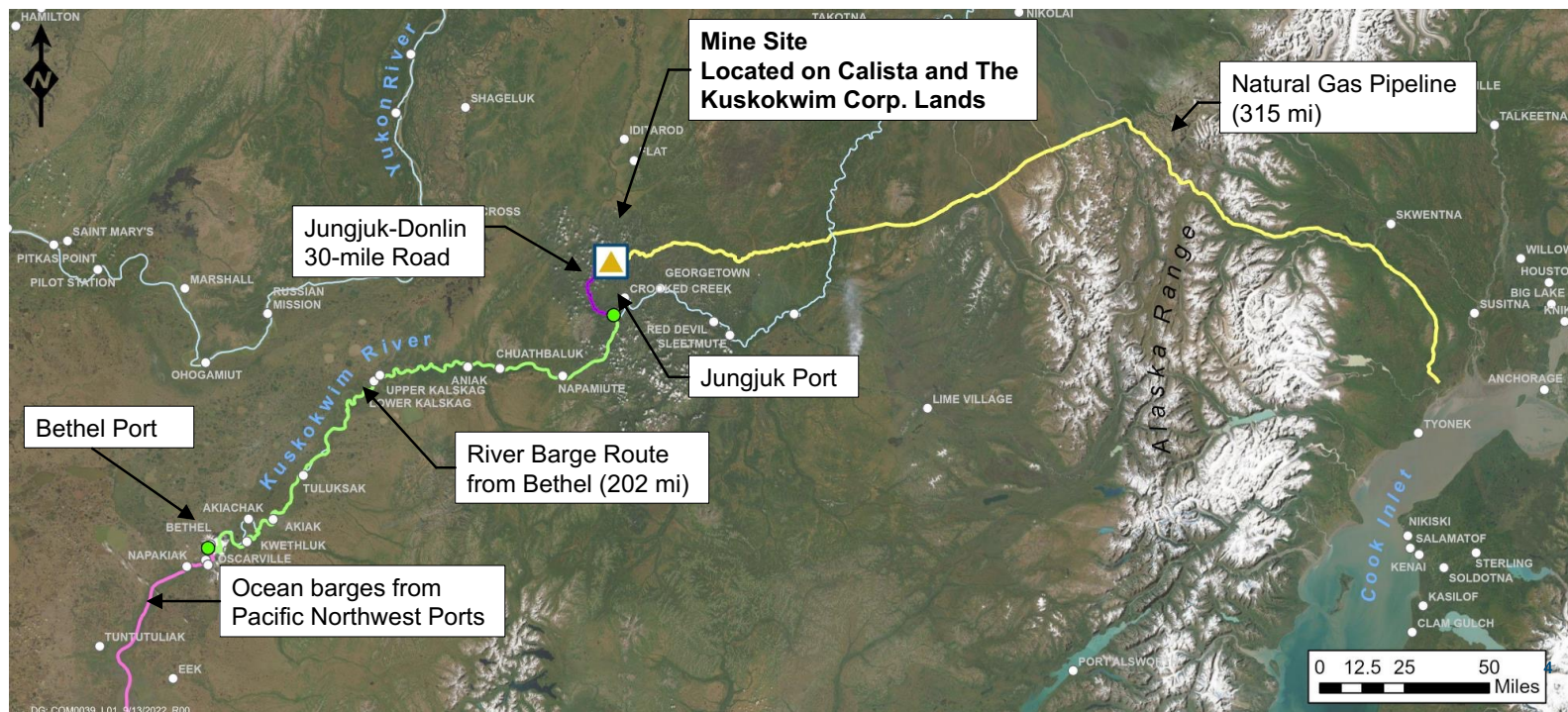
Mine site located on Calista and The Kuskokwim Corp Lands



- Mine site located on lands owned by Calista Corporation and The Kuskokwim Corporation (TKC).
- Working with Calista and TKC to develop the project.
- Hiring preference for shareholders of Calista and TKC.
- Bidder preference for Calista and TKC subsidiaries.
- Project activities are focused on State permitting, geologic drilling, optimization work, community outreach, and workforce development.
- A construction decision is still pending.



# Project Description



## Barge Plans – Traffic per season



Barge	Transporting	Transit	Number of Round Trips per Season	
			Construction	Operations
Ocean	Cargo/Fuel	To Bethel	30	26
River	Cargo/Fuel	Bethel to Jungjuk Port	69	122
River	Pipe and Equipment	Bethel to Devil's Elbow above Stony River	20 (during first two years of pipeline construction)	0

Typical span of the barging season is May to September

## Barging Plans – River Barge Fleet Design



- River cargo fleet
  - 2 barge and tows
    - Each 1 pusher-tug and 4 river-barge
- Fuel cargo fleet
  - 2 barges and tows
    - Each 1 pusher-tug and 4 double-hull river barges
- All barges would be
  - Shallow draft barges
  - 24 x 7 operation



Simulation of Donlin cargo barges

## Barging Impacts



- Key potential impacts on the Kuskokwim River considered in the Project's environmental analysis completed by the US Army Corps of Engineers (i.e., Environmental Impact Statement)
  - Spills
  - Bank Erosion
  - Fish stranding
  - Propeller wash impacts to rainbow smelt habitat
    - Disturb substrate at depths less than 10 ft under keel. Minimal disturbance at 15-20 ft under keel
  - Potential conflicts with other River uses

## Rainbow Smelt Monitoring Program

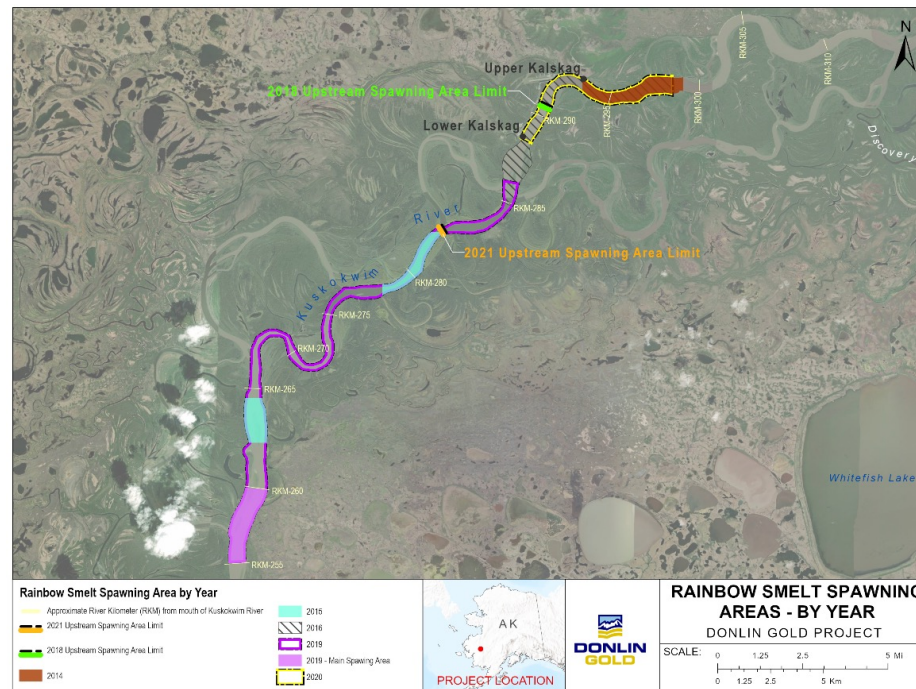
---



- Donlin Gold is committed to increase the understanding of the rainbow smelt life cycle in the river, including understanding of spawning, spawning timing and locations.
- Continue to assess the potential effects of barging to rainbow smelt and their spawning habitat and migration.
- Started during the Environmental Impact Statement; continued now and in the future. Important to consider ways to further minimize potential effects.



# Rainbow Smelt Spawning Reach



# Rainbow Smelt Monitoring Program



- Studies completed so far:
  - Spawning habitat (ID'ing spawning substrates, depth, and locations; 2014-2015)
  - Spawning migration tracking from the ocean to spawning grounds (2014-2016, 2019, 2020-2022)
  - Spawning population structure sampling (i.e., sex/age ratio) (2018-2019)
  - Larval smelt sampling and tracking (2021)
- Major conclusions:
  - Adult rainbow smelt migrate up-river mid to late May; spawning takes place the last week of May
  - Rainbow smelt mostly spawn in a 27 mi. reach of the Kuskokwim River, from the Bluffs upstream of Bogus Creek to just upstream of Upper Kalskag
  - Rainbow smelt eggs incubate for approximately 2-3 weeks before hatching
  - Most larvae outmigrate down the Kuskokwim over 4 days, though low densities continue to hatch and be found in the river over the following 2 weeks
  - 95% of spawning adults were age-3 fish

## Other Studies

---



- Hydrologic Studies
  - Resurvey of the narrow points in the Kuskokwim River
  - Rainbow smelt spawning habitat mapping.

## Barge Communication Plan

---



- Keeps communities informed of barge schedules/status
- Welcome feedback
- Annual meetings before & after barging season
- Regular barging status updates
  - Website, newsletters, social media
- In-river communication
  - Pilot vessel in congested areas w/ VHF & cell phone
  - Yup'ik speaking pilot vessel captain
- Real-time barge location information
  - Smart phone app for Donlin Barging
  - Conflict resolution process

# Apply for a seat on the SCAC



## DATROC COMMUNITY ADVISORY COMMITTEES

### **SUBSISTENCE COMMUNITY ADVISORY COMMITTEE (SCAC)**

#### **WHAT IS THE SCAC?**

This committee focuses on **the relationship between the Donlin Gold project and subsistence activities** within the Kuskokwim River drainage. This committee will hold its first meeting in 2022, after members are recruited through an application process.

#### **ROLE OF SCAC MEMBERS:**

1. Receive and distribute information on Donlin Gold's plans, operations and monitoring activities.
2. Communicate information of local subsistence activities and traditional knowledge as it relates to information shared by Donlin.
3. Provide a forum for stakeholders to discuss potential issues of concern related to Donlin Gold's plans, operations or monitoring activities on subsistence activities, wildlife or habitat.
4. Make recommendations to DATROC related to subsistence and assist DATROC into developing and periodically updating a subsistence plan for lands and waters affected by the Project.





## Contact information for SCAC



### DATROC COMMUNITY ADVISORY COMMITTEES

#### **SUBSISTENCE COMMUNITY ADVISORY COMMITTEE (SCAC)**

**TO APPLY, PLEASE CONTACT:**

Colleen Laroux, Community Relations & DATROC Coordinator

[Colleen@datroc.com](mailto:Colleen@datroc.com) or [claroux@donlingold.com](mailto:claroux@donlingold.com)

907-543-0745 Phone

907-543-0779 Fax

Donlin Gold LLC

P.O. Box 2987

Bethel, AK 99559

**FOR MORE INFO PLEASE VISIT: <https://letstalkdonlin.com/>**



# Quyana!



[www.donlingold.com](http://www.donlingold.com)