



BISON FUN FACTS & ACTIVITIES



▲ Bison at Yellowstone National Park, Wyoming. Photo by Neal Herbert/NPS

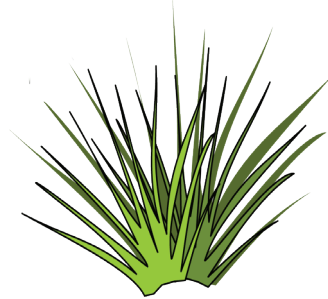
HELLO
my name is

Bison

The American bison has many different names. Some people call them bison. Others call them buffalo. Researchers refer to them by their scientific name: *Bison bison*.

Bison calves are nicknamed "red dogs," because of their orange-red color, which changes to dark brown within a few months. A calf can weigh 30 to 70 pounds at birth. That's a big baby!

American bison live on grasslands and prairies. They are herbivores, which means they only eat plants.



Bison are the largest mammals in North America. An adult male bison stands nearly 6 feet tall and can weigh up to 2,200 pounds—that's almost four times the weight of a piano!



Despite their size, bison are **QUICK!** They can gallop faster than a horse and reach speeds of 35 miles per hour!

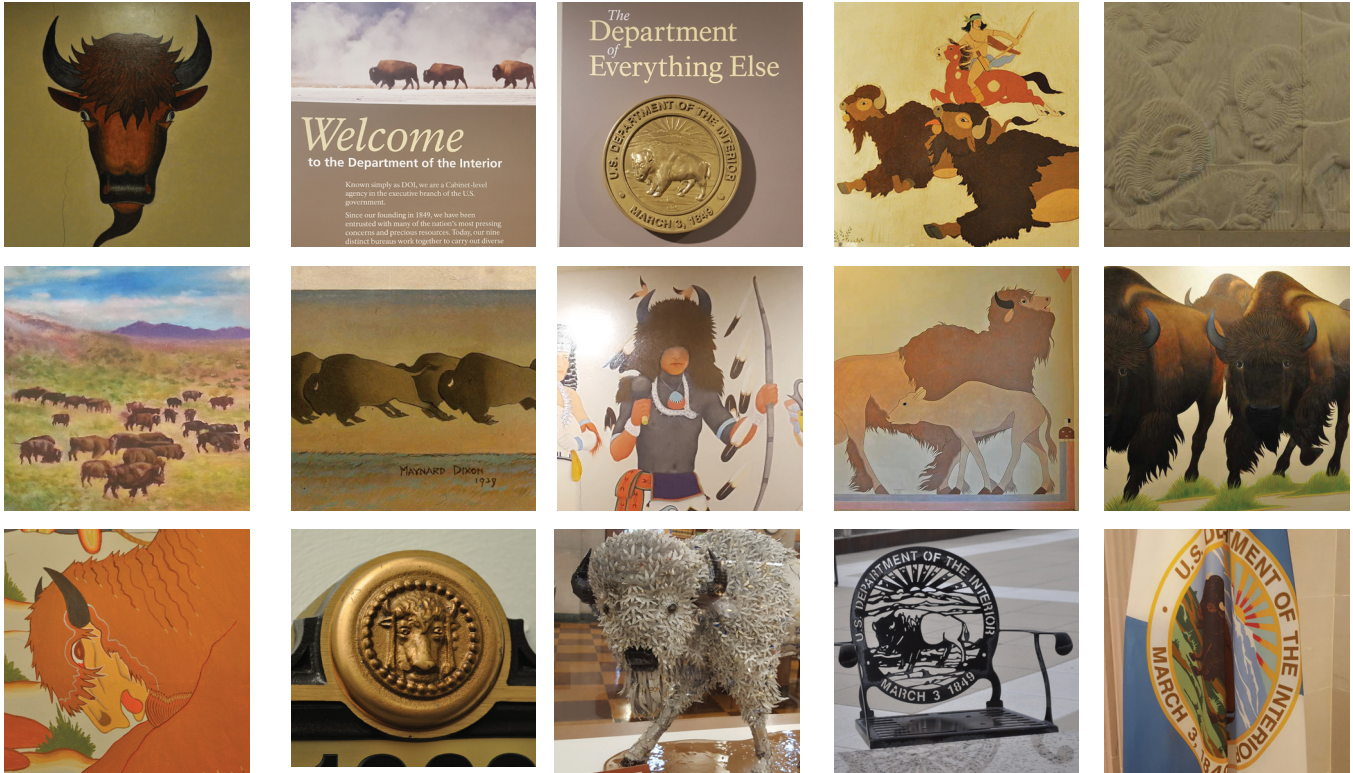
Since the late 1800s, the U.S. Department of the Interior has played a key role in conserving bison herds. Public lands managed by Interior support 17 bison herds (nearly 10,000 bison!) in 12 states.



In 2016, the American bison was named the national mammal of the United States.

◀ Bison at Rocky Mountain Arsenal National Wildlife Refuge, Colorado. Photo by Jim Carr/USFWS

Bison appear in artwork and in architectural details throughout the Stewart Lee Udall Department of the Interior Building, the agency's headquarters in Washington, D.C. Here are just a few examples. How many bison images have you spotted during your visit?



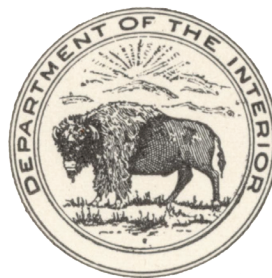
The U.S. Department of the Interior's official seal originally included an eagle. In 1917, the U.S. Department of the Interior began using a bison instead. Notice how its appearance has changed over the years.



This official seal from **1917** is in the Interior Museum's collection.



A flag with a golden bison was also designed for the Interior Secretary in **1917**.



Here's how the seal looked in the mid **1930s**.



This is the one used **today**.

What do you think a bison logo should look like? Would it be different than the Interior's current seal?

Draw your version here! ▶

