

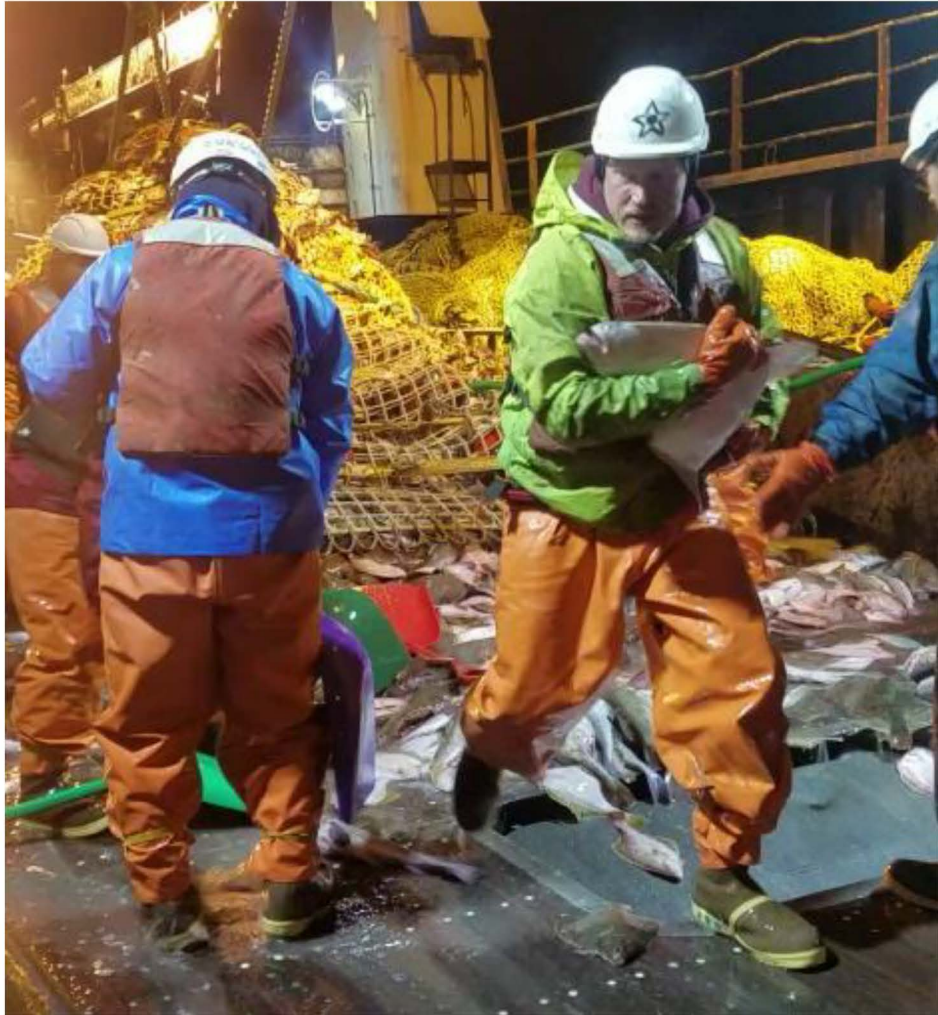
# Amendment 80 Fisheries Bycatch

Bristol Bay Regional Advisory Committee



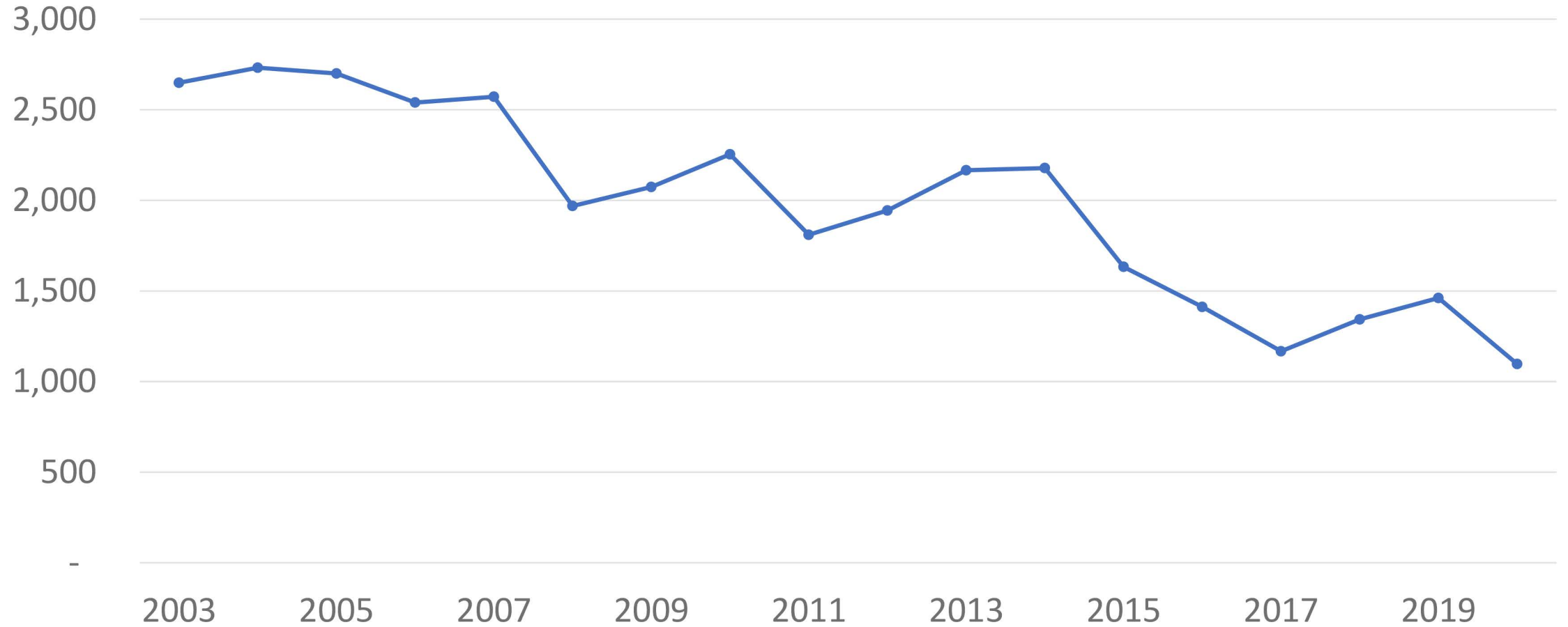


# Halibut Bycatch Reductions



- Fishing target choice, location, time of day
- Small test tows
- Excluders
- Vessel to vessel comms
- Weekly bycatch calls
- Deck sorting
- Halibut Avoidance Plan

# BSAI Non - Pollock C/P Fleet Halibut PSC (2003 - 2020)



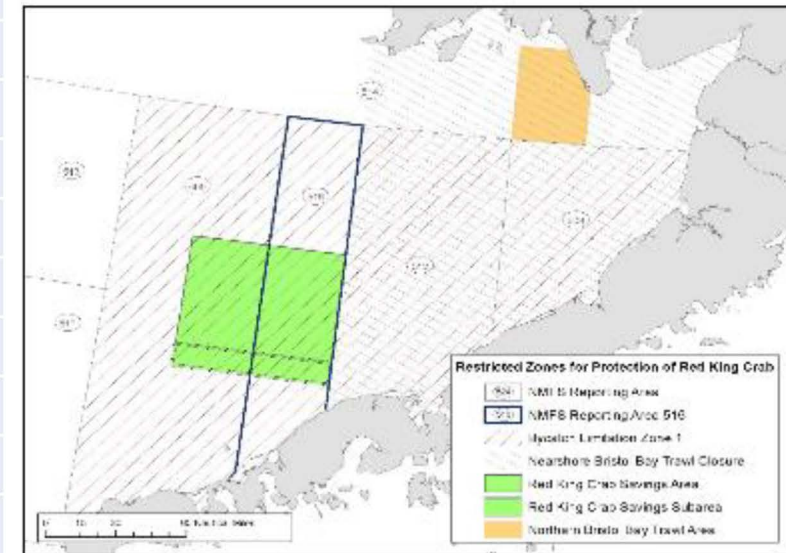
# Red King Crab Bycatch (2010 – 20)



## Bristol Bay Red King Crab (RKC) Percent of total mortality by gear

Year	Directed Fishery Retained + Cost Recovery	Directed Fishery Discards	Trawl Bycatch Mortality	Fixed Gear Bycatch Mortality	Total Mortality (t)
2010	87.1%	11.8%	1.1%	0.0%	7,767
2011	88.3%	10.1%	1.4%	0.3%	4,148
2012	93.2%	5.5%	0.9%	0.5%	3,953
2013	87.8%	8.9%	1.4%	1.2%	4,646
2014	84.2%	12.2%	0.6%	2.2%	5,400
2015	87.2%	8.9%	0.8%	1.4%	5,394
2016	90.1%	7.7%	1.5%	0.6%	4,447
2017	86.5%	7.5%	2.5%	3.5%	3,691
2018	77.2%	14.5%	2.9%	5.4%	2,720
2019	80.5%	13.9%	3.6%	2.0%	2,274
2020	80.7%	13.7%	5.1%	0.5%	1,628

- In 2022 NOAA to reduce PSC limit by ~66%
- Trawl bycatch historically is < 2% of the total removals.
- In addition to existing closures, NOAA will also close Red King Crab Savings Sub Area in 2022.





# Snow Crab Bycatch (2001 – 2020)



- In 2022 NOAA will reduce PSC limits by ~45%
- Trawl bycatch mortality is historically < 1% of the total removals.
- Much of surveyed snow crab biomass is located in areas off-limits to A80.
- Re-building plan will provide additional analysis to ID any new potential solutions.

## Snow Crab (*opilio*) estimated proportion of total mortality by gear type

Year	Directed Fishery Retained	Directed Fishery Discard Mortality	Trawl Bycatch Mortality	Total Mortality (kt)
2010	97%	2%	0.6%	25.38
2011	95%	4%	0.4%	42.31
2012	92%	7%	0.7%	32.62
2013	88%	12%	0.4%	27.94
2014	89%	11%	0.4%	34.64
2015	85%	14%	0.6%	21.58
2016	87%	12%	0.5%	11.06
2017	81%	18%	0.4%	10.59
2018	80%	18%	1.5%	15.62
2019	74%	25%	1.2%	20.76
2020	78%	22%	0.3%	26.28

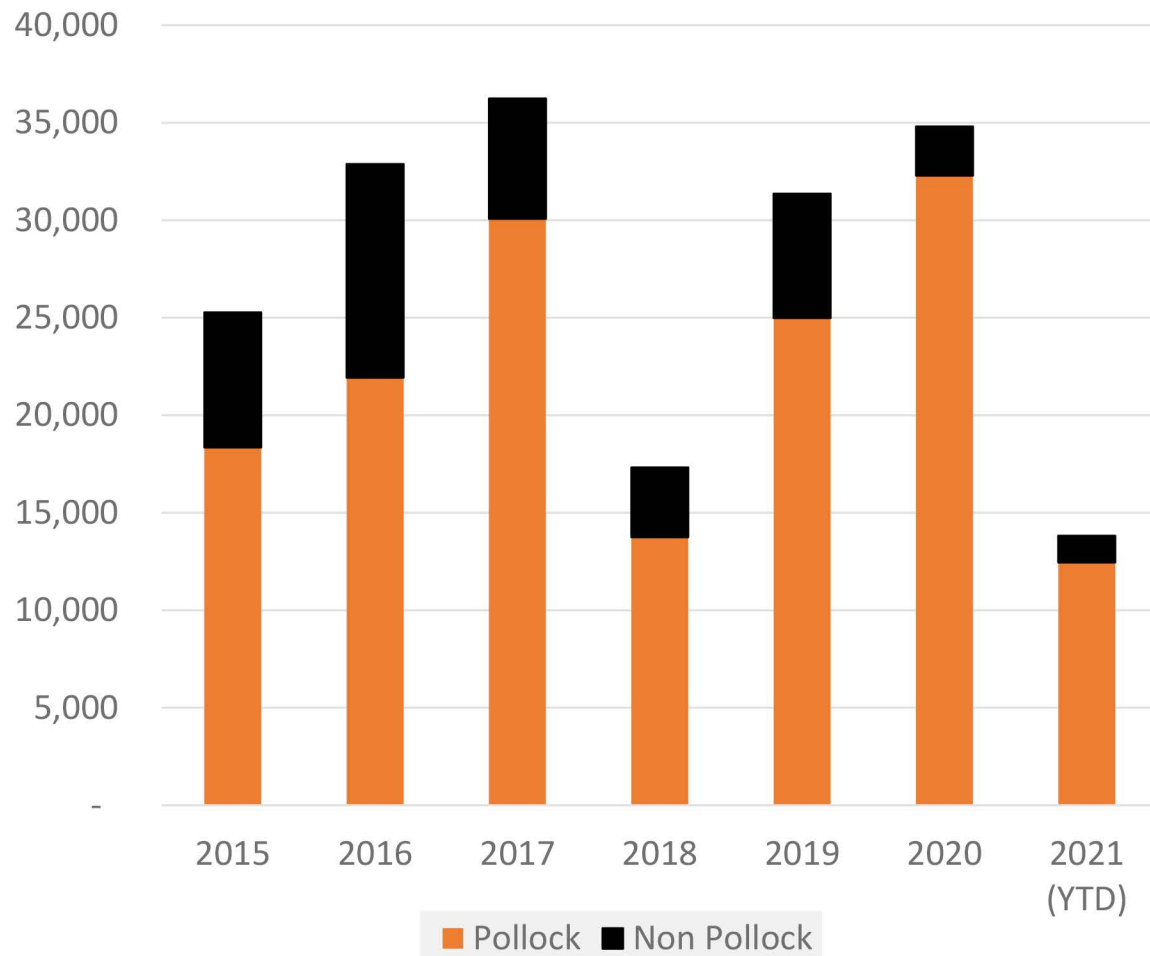
Source: C. Szuwalski, An Assessment for Eastern Bering Sea Snow Crab, p. 33, Sep 2021

# BSAI Trawl Salmon Bycatch

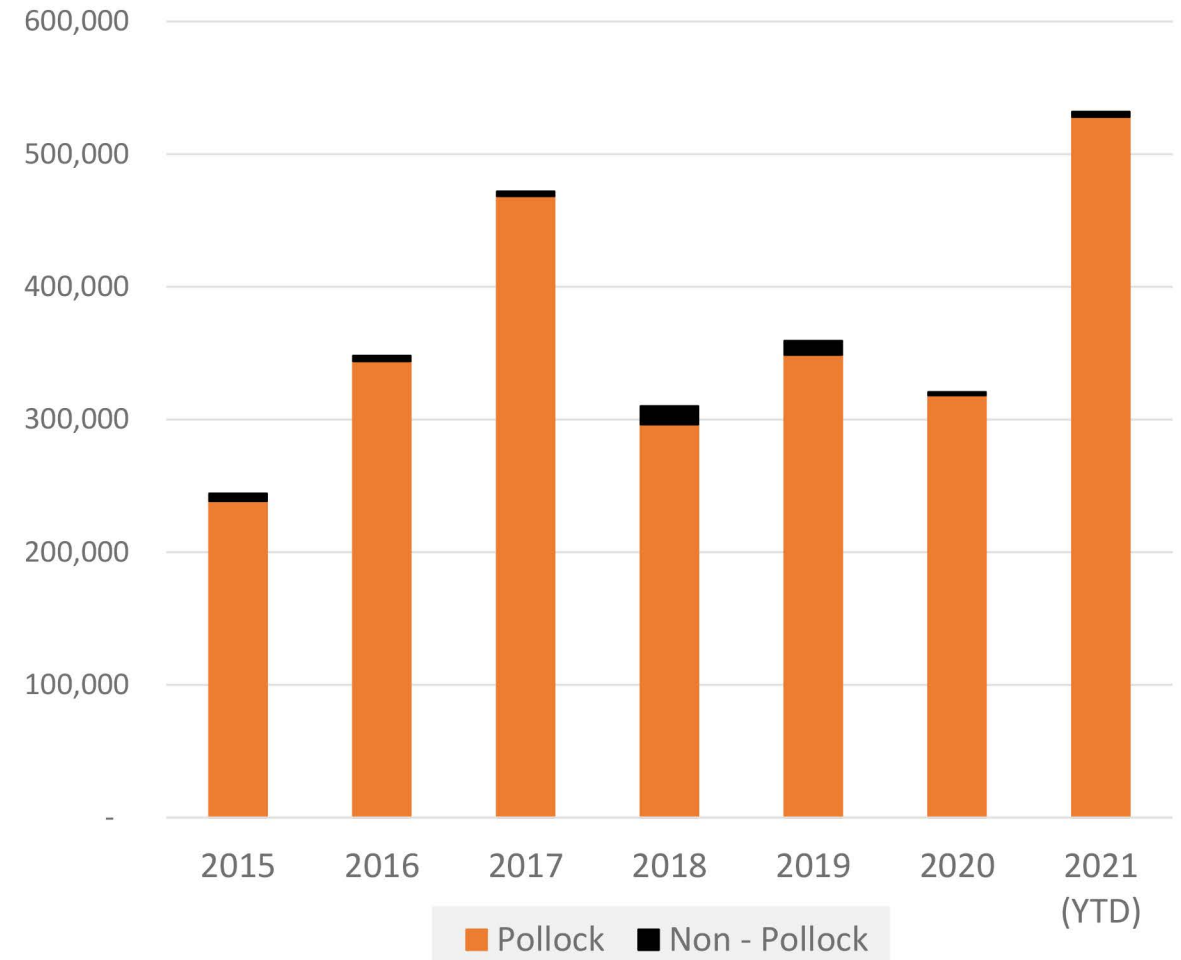
GROUND FISH  
FORUM



### Chinook Bycatch (# of Fish)



### Non - Chinook Bycatch (# of Fish)





A photograph of a fishing boat deck at dusk. The deck is cluttered with fishing equipment, including large spools of yellow and green netting, blue barrels, and various ropes. A large black crane is mounted on the deck, extending over the water. In the background, a calm body of water reflects the twilight sky, with mountains visible on the horizon. The word "Questions?" is overlaid in white text on the right side of the image.

Questions?