

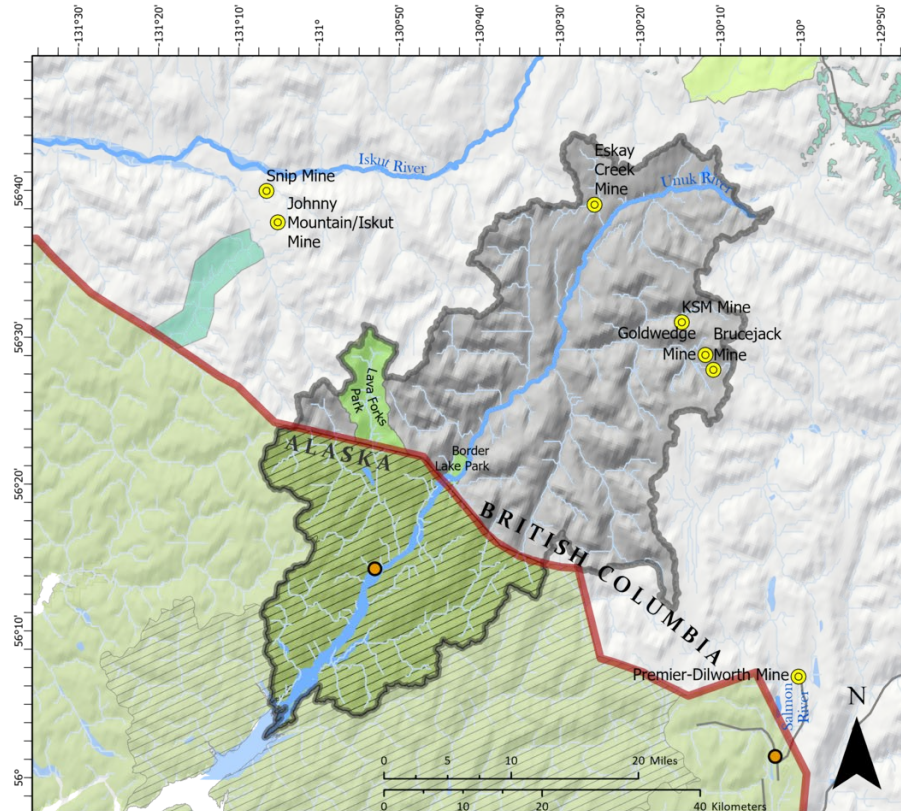
An aerial photograph of a river system flowing through a dense, green forest. The river has several meanders and small islands. In the background, there are large, forested mountains under a clear sky. The text is overlaid on the upper half of the image.

Ketchikan Indian Community

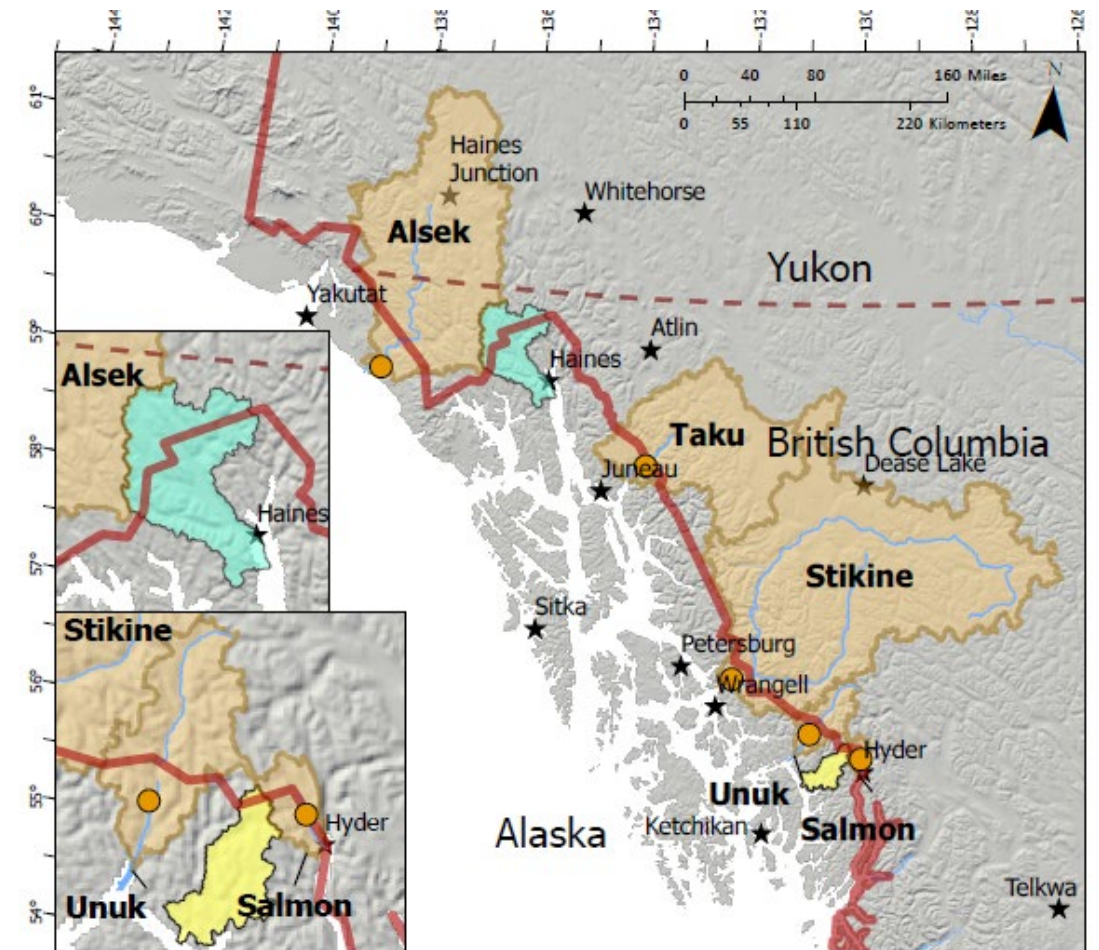
Unuk River System Ooligan eDNA Study

Funded by American Native Administration
Environmental Regulatory Enhancement Grant

Transboundary Rivers in SE Alaska



- Unuk Watershed
- Transboundary Mines
- US - Canada Border
- USGS Super Gage Locations
- Unuk River
- Tributaries
- US Tongass National Forest
- US Wilderness Areas
- Canadian Provincial Park
- Canadian National Park
- Canadian Park - Other
- Canadian Territorial Park
- Canadian Protected and Conserved Areas



- USGS Study Transboundary Rivers
- U.S. - Canada Border
- Yukon - British Columbia Border
- USGS Super Gages
- USGS Study Transboundary Watersheds
- Chickamin
- Chilkat
- ★ Cities



Map of Southeast Alaska region with major transboundary watersheds and USGS super gages. Insets of the Chilkat and Unuk/Chickamin/Salmon watersheds.



TAILINGS
~1.62 billion tons
produced



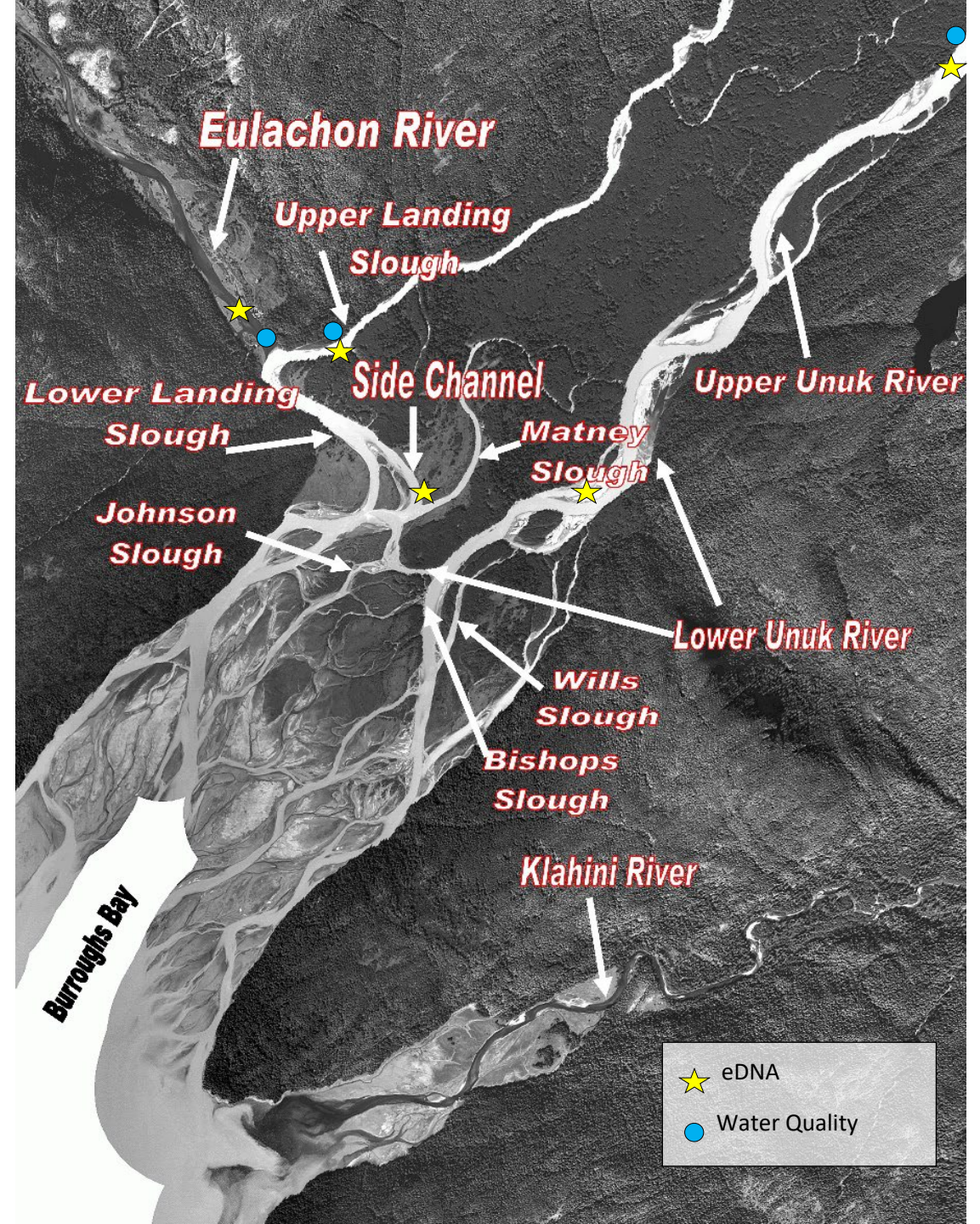
TAILINGS DAM
723 foot dam
one of four separate
tailings dams

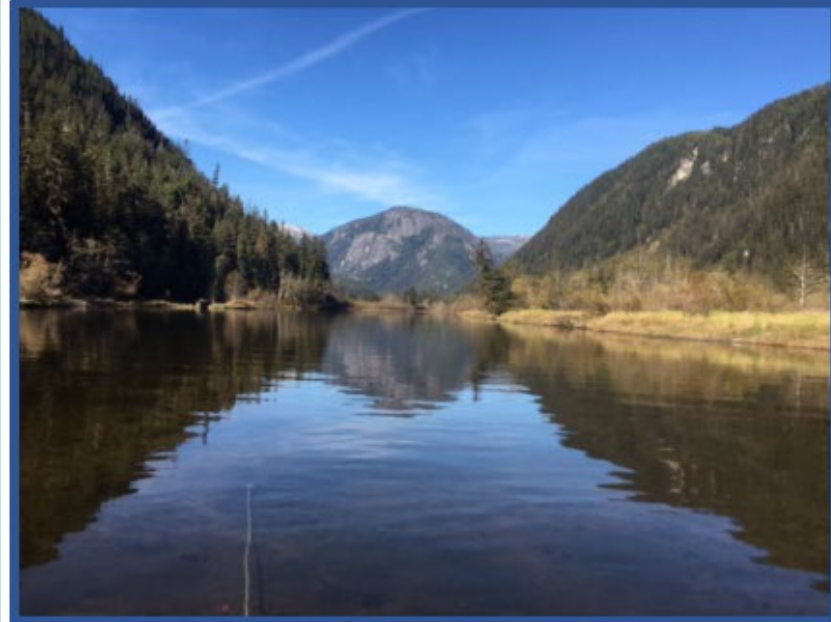


WATER TREATMENT
at least 250 years
of water treatment
required

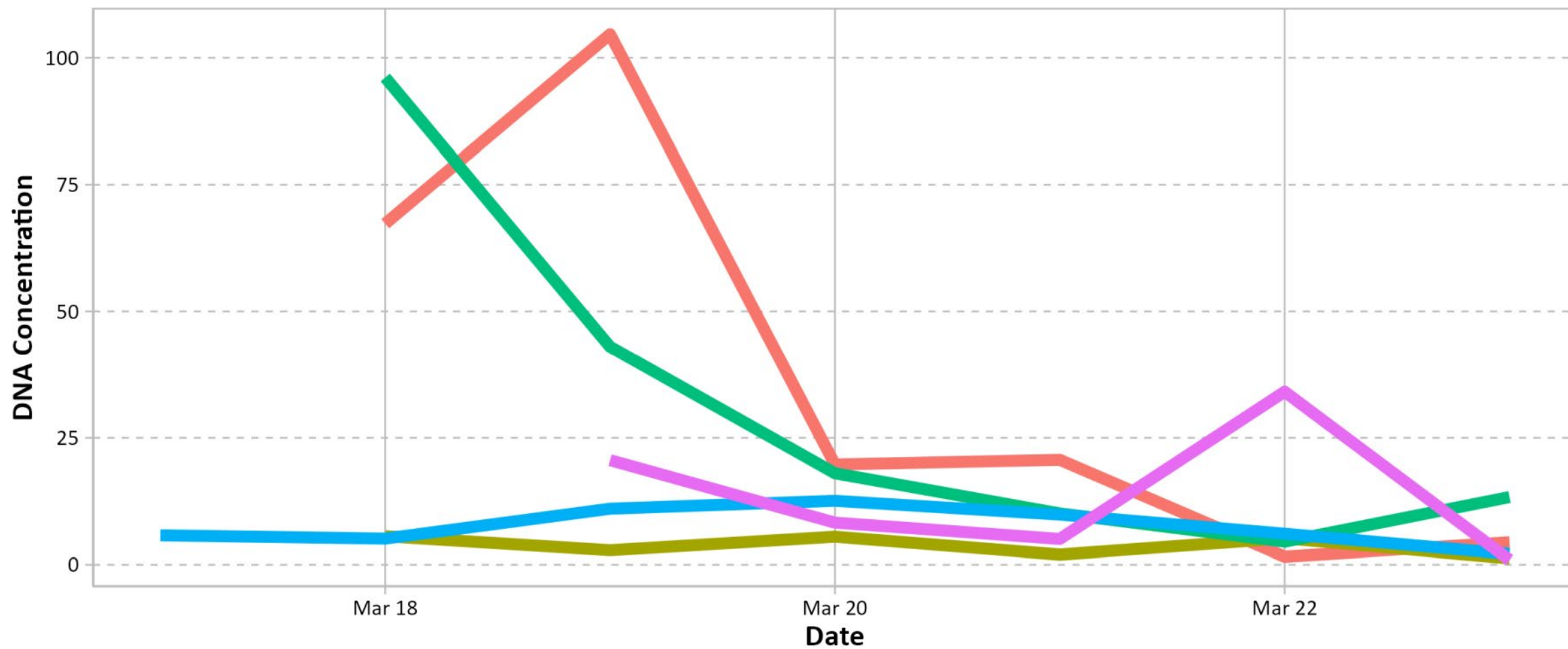


ACID GENERATION
6.15 billion tons
of wasterock are potentially
acid generating





2022



River Eulachon LowerLanding_Mattney Unuk Upper_Landing Upper_Unuk