



Interagency Aviation Information Bulletin



No. IAIB 16-02

Date: May 2, 2016

Page 1 of 2

Subject: Roberts Field, Redmond, OR (RDM) Airport Closure

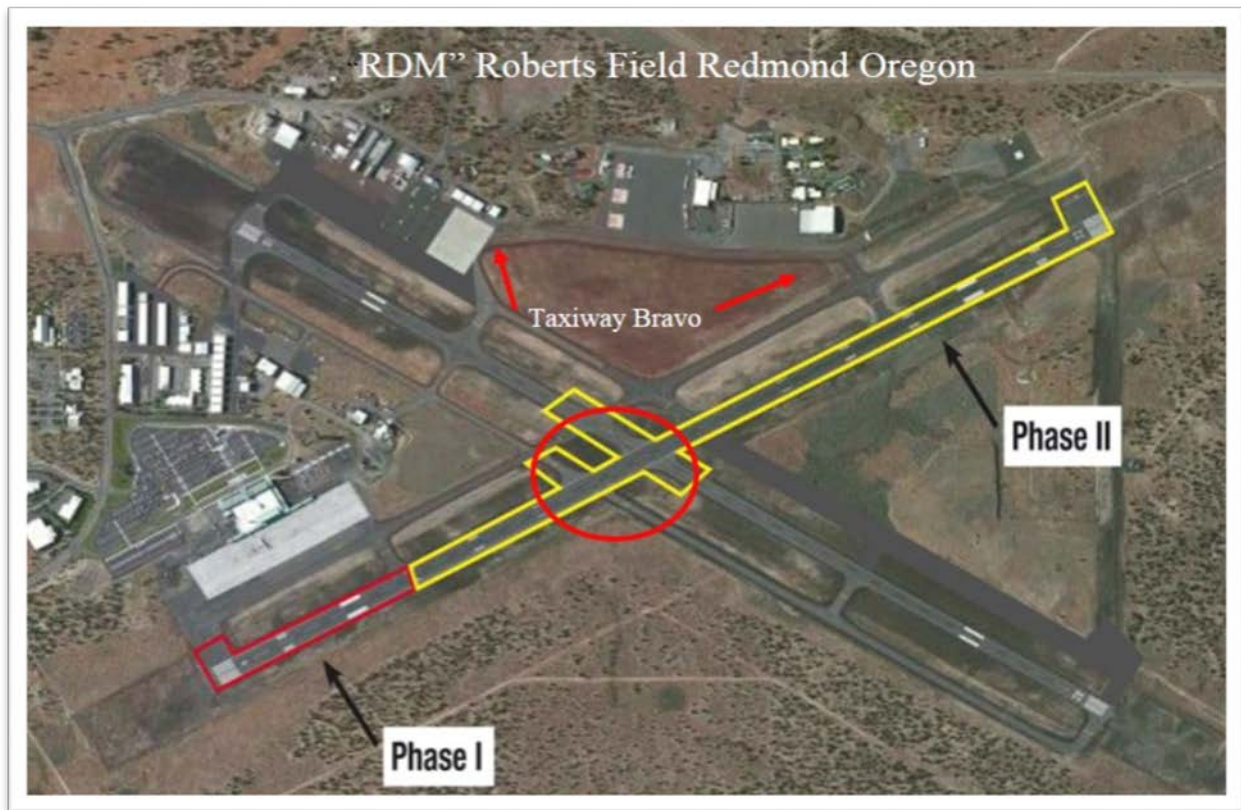
Area of Concern: Aviation Operations

Discussion: The Redmond Airport Roberts Field (KRDM) will be undergoing a Runway Improvement Project that will involve an airport closure for the period beginning May 2 through May 22, 2016. Redmond Municipal Airport, Roberts Field will suspend all fixed-wing and commercial air service for 21 days to reconstruct the intersection portion of the runways. Redmond Municipal Airport's runways are in an 'X' formation, requiring the closure of both runways to complete the intersecting portion.

Runway 5/23 and various taxiways will be closed from March 7– July 7, 2016.

Taxiway Bravo reconstruction will begin June 1 and is expected to go into September. Be sure to check NOTAMS as routing to the Airtanker Base and Smokejumper Base may change during construction.

Dates: Construction will occur approximately from March 30 to July 7, 2016. Airport closure is estimated to last from May 2-22, 2016.



Operations: Redmond Air Group aviation operations will move to Prineville Crook County Airport (S39) for the month of May during the closure.

Redmond Airtanker Base will not be available for reloading during the closure but will remain open during the rest of the runway and taxiway reconstruction during the season.

Remember to Check Notams at <https://notams.aim.faa.gov/notamSearch/nsapp.html#/> Prior to any operations to RDM.

Contact: Kim Reed at: kimreed@fs.fed.us or by phone at 541-504-7264, 541-408-7737(cell). Alternate contact is Gary Boyd at: gboyd@fs.fed.us or by phone at 541-504-7263 or 541-280-8555 (cell).

/s/ Keith Raley
Chief, Aviation Safety,
Training & Program Evaluations
DOI, Office of Aviation Services

/s/ Gary Sterling
Branch Chief, Aviation
Safety Management Systems
USDA Forest Service