



Federal Subsistence Board

1011 East Tudor Road, MS 121
Anchorage, AK 99503-6199



Yukon Area Fall Salmon Closure and Non-Salmon Schedule in Coastal District and District 1

TEMPORARY SPECIAL ACTION

Under Authority of: 36 CFR 242.10 and .19
43 CFR 51.10 and .19

Temporary Special Action No: 03-FC-01-26

Issued at: Fairbanks, Alaska, July 9, 2026

Effective Date: Monday, July 13, 2026, 12:01 a.m. for Coastal District and District 1

Expiration Date: Thursday, December 31, 2026, 8:00 a.m. unless superseded by subsequent special action

EXPLANATION:

This Temporary Special Action closes the harvest of fall chum and coho salmon for all users in Federal public waters between the latitude of Point Romanof and the latitude of the westernmost point of the Naskonat Peninsula including those waters draining into the Bering Sea (the Coastal District), and Yukon District 1.

In the mainstem and all areas where salmon are migrating, gillnets are restricted to 4-inch or smaller mesh, limited to 60 feet in length, and must be operated as a set net. These non-salmon gillnets are being placed on a schedule in order to reduce incidental harvest of fall chum, Chinook and coho salmon.

Selective gear such as manned fish wheels, dip nets, beach seines, and hook and line gear may be used for pink salmon, sockeye salmon, and non-salmon species 24 hours per day, 7 days per week. Fish-friendly fish wheel construction is required. Please practice respectful and safe fish handling techniques and ensure any Chinook salmon, chum salmon, or coho salmon caught in selective gear types are released alive so they may continue upriver to their spawning grounds. If you are catching species closed to fishing in a 4-inch gillnet, please move it to avoid catching these species closed for harvest.

In order to provide more efficient harvest opportunity for non-salmon in areas without migrating salmon, this special action also allows the use of 6-inch (or smaller) mesh set gillnets to target non-salmon in limited areas identified in the map on page 5. Fishermen should not be catching any salmon in these limited areas. These 6-inch opportunities for non-salmon harvest are not allowed in the mainstem rivers or streams, or any main channels where salmon are present.

REGULATION:

36 CFR 242.27(e)(3) and 43 CFR 51.27(e)(3) Subsistence taking of fish—Yukon-Northern Area is amended to read:

Pursuant to the special actions in effect, [03-KS-01-26](#) and [03-KS-14-26](#), Chinook salmon fishing remains closed to all users. Subsistence summer chum salmon fishing with selective gear closes at 11:59 p.m. Sunday, July 12, and gillnets of 4-inch and smaller may be used to target non-salmon species 24 hours per day, seven days per week.

§ __.27(e)(3)(ii) *In Federal public waters of the following Yukon River Drainage areas:*

Coastal District and District 1, which includes the Black River and the communities of Chevak, Hooper Bay, Scammon Bay, Emmonak, Nunam Iqua, Alakanuk, and Kotlik:

Effective 12:01 a.m. on Monday, July 13, subsistence fishing for chum and coho salmon closes for all users. Chinook, chum, and coho salmon must be released alive immediately from selective gear types. Pink and sockeye salmon may be retained.

Effective 12:01 a.m. on Monday, July 13, non-salmon subsistence fishing with 4-inch or smaller mesh gillnets is only allowed on a weekly schedule from noon Thursdays until noon Sundays.

Effective 12:01 a.m. on Monday, July 13, non-salmon subsistence fishing with 6-inch or smaller mesh gillnets, limited to 60 feet in length, operated as a set net near shore is allowed, 24 hours a day, 7 days per week in all lakes without a closed drainage flowing into them, plus the rivers and sloughs listed below and named on the map.

The following coastal drainages are open with 6-inch set gillnets for whitefish and other non-salmon from **1 mile upstream of the mouth**. Coordinates mark the downstream end of the open area:

<i>Whitefish/Non-salmon Area</i>	<i>Latitude</i>	<i>Longitude</i>
Aknerkochik River	61° 06.266' N	165° 07.183' W
Kealavik River	61° 01.117' N	164° 56.610' W
Kun River	61° 50.815' N	165° 35.352' W
Lithkealik River	61° 42.454' N	165° 51.656' W
Narokachik River	61° 04.180' N	164° 51.928' W
Ninglikfak River	61° 29.032' N	165° 43.468' W
Pastoliak River	63° 01.901' N	163° 14.931' W

The following drainages are open with 6-inch set gillnets for whitefish and other non-salmon from **500-feet upstream of a closed area**. Coordinates mark the downstream end of the open area:

<i>Whitefish/Non-salmon Area</i>	<i>Latitude</i>	<i>Longitude</i>
Acirrluar River upstream of the Pektotolik Slough confluence	62° 32.433' N	164° 07.024' W
Alarivik (Kaingulivik) River	62° 21.220' N	165° 10.525' W
Amigtuli River	62° 04.954' N	164° 56.119' W
Anakshek Pass	62° 15.893' N	164° 44.873' W
Angyartulleq River	62° 19.755' N	164° 48.893' W
Aterrlugliq River	62° 27.686' N	164° 00.944' W
Atraluguli River upstream of the Tunurokpak Channel confluence	62° 21.864' N	163° 57.327' W
Big River	61° 48.517' N	163° 25.312' W
Chaniliut (Chuilnak) Slough	63° 02.360' N	163° 24.265' W
Chelunginik River	61° 38.889' N	165° 23.863' W
Cilarsuinaq River	62° 34.246' N	163° 53.703' W
Ear River	61° 50.793' N	165° 28.194' W
Egkuqliq River	62° 25.364' N	164° 33.212' W
Elachik Slough	63° 02.008' N	163° 33.898' W
Equgpagtaalek River	62° 55.382' N	164° 16.162' W
Ikiituk River	62° 19.971' N	164° 47.110' W
Iqalluarvik River	62° 31.300' N	163° 50.814' W
Kangiar (Kanyak) River	62° 31.591' N	164° 57.498' W
Kanunuk Slough	63° 02.066' N	163° 34.622' W
Kaviaq River	62° 12.065' N	165° 03.642' W
Kayangulivik Slough	62° 21.235' N	165° 12.780' W



Federal Subsistence Board

1011 East Tudor Road, MS 121
Anchorage, AK 99503-6199



Keggluq River	62° 27.041' N	164° 34.550' W
Kiiqerciq River	62° 15.853' N	165° 02.254' W
Kotlik River	63° 01.900' N	163° 33.783' W
Kuiggaq River	62° 32.341' N	164° 46.795' W
Kuiggaq Slough	62° 40.270' N	163° 55.375' W
Kuimlil'er River	62° 19.871' N	164° 49.022' W
Kuttak River	61° 40.679' N	165° 34.982' W
Kwecharak River upstream of the Komoiarak Slough confluence	61° 38.684' N	165° 40.430' W
Lirumavik River	62° 07.656' N	164° 53.669' W
Maklacuartuli River	62° 11.300' N	164° 59.146' W
Manokinak River upstream of the Nungatak River confluence	61° 31.172' N	164° 23.095' W
Manumik River	62° 03.051' N	165° 00.256' W
Nantok River	61° 51.287' N	163° 51.381' W
Nanvaruq (Hamilton) Slough	62° 43.656' N	163° 56.290' W
Narullegarvik (Nagosakchowik) River	62° 31.594' N	164° 57.609' W
Neqlercurviar River	62° 34.289' N	164° 28.715' W
Neqlercurvik River	62° 34.178' N	164° 29.158' W
Paunrivik River	62° 28.823' N	164° 33.563' W
Pellaavik River	62° 16.427' N	164° 50.765' W
Pitmik River	61° 47.269' N	163° 38.005' W
Piyukenuk River	61° 37.887' N	165° 04.870' W
Qip'ngayagaq River	62° 20.019' N	165° 20.067' W
Qullirraq River	62° 17.651' N	164° 52.031' W
Talik River	61° 13.623' N	164° 38.899' W
Taqikarpak River	62° 36.341' N	164° 24.097' W
Tungpuk River	61° 52.146' N	165° 17.518' W
Tunuirun Pass	62° 14.913' N	164° 53.893' W
Uiqerreik Creek	62° 16.733' N	165° 02.042' W
Uqrarivik River	62° 43.634' N	164° 20.635' W

Fishing for non-salmon species with selective gears, including manned fish wheels, hook and line with a rod or pole, hand line, longline, fyke net, dip net, and beach seine, is open 24 hours a day, 7 days per week. Pink salmon, sockeye salmon, and non-salmon species may be retained. Chinook, chum, and coho salmon must be released alive immediately from selective gear types. If closed salmon species are caught while fishing for non-salmon with gillnets, they should be released alive when possible but may be legally retained if dead. Gillnets cannot block more than ½ width of any waterway.

While a fish wheel is operating, it must be manned at all times. Fish wheel basket sides and bottoms must be made of soft mesh material such as seine twine. Fish wheels must also have an adjustable or fixed slide or chute with a smooth bottom and closed cell foam lined sides that return Chinook salmon immediately back to the water.

JUSTIFICATION:

The drainage-wide Chinook salmon run is coming in stronger than previous years, however in-season projections indicate escapement goals are unlikely to be met. Chinook salmon closures will be required for the duration of their migration. The preseason forecasts for fall chum and coho salmon

indicate escapement goals are unlikely to be met. Therefore, retention of chum and coho salmon in Federal public waters of the Yukon River Coastal District and District 1 is closed by this Temporary Special Action (03-FC-01-26).

To further protect fall salmon populations, subsistence non-salmon fishing with 4-inch and smaller mesh gillnets is now placed on a schedule to reduce incidental harvest of Chinook, chum, and coho salmon. Since there is no conservation concern for non-salmon species, fishing for non-salmon remains open to all users, and is not limited to federally qualified subsistence users in Federal public waters.

Specific harvest areas for targeting whitefish and other non-salmon species with 6-inch set gillnets have been carefully selected based on databases and Indigenous and local knowledge to avoid salmon spawning or migration zones. Closure buffers, 1 mile upstream from coastal river mouths and 500 feet upstream from closed stream mouths, have been established to protect migrating salmon.

CONSULTATION AND OUTREACH:

The Yukon River salmon outlooks and management strategies were discussed at a Federal public hearing; the Eastern Interior, Western Interior, and Yukon Kuskokwim Delta Regional Advisory Council meetings; the Yukon River Drainage Fisheries Association preseason meeting; at the Yukon River Panel and at the Yukon River Inter-Tribal Fish Commission annual meeting. The Federal manager offered formal Government-to-Government Tribal Consultation meetings with Yukon River drainage Tribal Governments upon request. The Federal fishery outlook and management strategy was sent to all Yukon Tribal and City governments on April 7. Approximately 3,500 copies of the Preseason Outlook flier were mailed to Yukon River fishing households in May.

This action was taken in coordination with the Alaska Department of Fish and Game (ADF&G). The fishing schedules announced here match those issued concurrently by the ADF&G in State waters (**Fall Fishery Advisory Announcement #1**). The Federal Subsistence Regional Advisory Council Chairs for the Yukon-Kuskokwim Delta, Eastern Interior, Western Interior, and Seward Peninsula Regional Advisory Councils were notified as was the Chair and Executive Director of the Yukon River Inter-Tribal Fish Commission. Review was provided by the Office of Subsistence Management.

Federal Subsistence Board by delegation to:

Holly C. Carroll

Holly Carroll

U.S. Fish and Wildlife Service

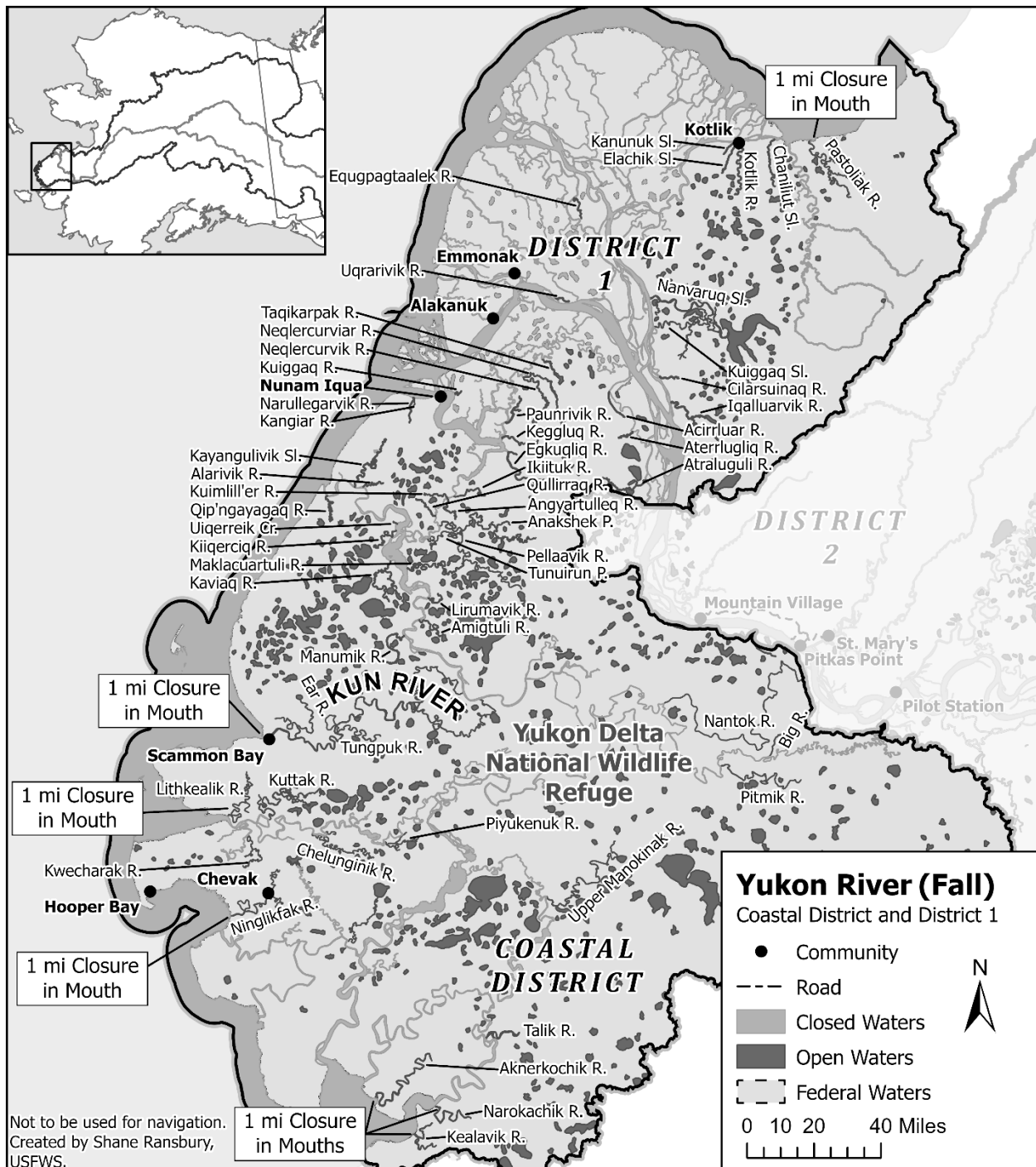
Yukon River Inseason Fisheries Manager

Northern Alaska Fish and Wildlife Field Office



Federal Subsistence Board

1011 East Tudor Road, MS 121
Anchorage, AK 99503-6199



For Coastal District and District 1, all labeled waterways and all lakes without a closed drainage flowing into them are open to 6-inch gillnets for non-salmon (dark gray). Rivers and sloughs that are open to 6-inch non-salmon fishing have a closure buffer from the mouth to 500 feet upstream. Rivers flowing into the coast have a longer buffer, from the mouth to 1-mile upstream. **The Yukon River**

mainstem remains closed to 6-inch mesh gillnets. Areas that remain closed to 6-inch gillnets are not named but are shown in light gray.

For additional information concerning Yukon River Federal Special Actions contact the USFWS Federal Yukon River Subsistence Fishery Manager, Holly Carroll; holly_carroll@fws.gov, (907) 351-3029 or Assistant Manager, Keith Herron; keith_herron@fws.gov, (907) 334-5391.

For information concerning State management actions contact: Summer Season Manager, Deena Jallen; deena.jallen@alaska.gov, Fall Season Manager, Matthew Olson; matthew.olson@alaska.gov, or call the Fairbanks office at (907) 459-7274 or Emmonak office at (907) 949-1320.

Information about the Federal Subsistence Management Program may be found on the web at www.doi.gov/subsistence or by visiting www.facebook.com/subsistencealaska.

Missing out on the latest Federal subsistence issues? To receive email updates on Federal Subsistence Management Program activities, send a request to subsistence@ios.doi.gov.

DISTRIBUTION:

Anthony Christianson, Chair, Federal Subsistence Board
Sara Boario, Alaska Regional Director, USFWS
Jackie Cleveland, Chair, Yukon-Kuskokwim Delta Subsistence Regional Advisory Council
Jack Reakoff, Chair, Western Interior Subsistence Regional Advisory Council
Charlie Wright, Chair, Eastern Interior Subsistence Regional Advisory Council and Yukon River Inter-tribal Fish Commission
Louis Green Jr, Chair, Seward Peninsula Subsistence Regional Advisory Council
Phet Souphanya, Assistant Special Agent in Charge, LE Division, USFWS
Crystal Leonetti, Director, Office of Subsistence Management
Scott Ayers, Deputy Director, Office of Subsistence Management
Justin Koller, Supervisory Regulations Specialist, Office of Subsistence Management
Vivian Korthius, Executive Director, Association of Village Council Presidents
Dorothea Adams, Executive Director, Council of Athabascan Tribal Governments
Bruce Thomas, Director, Natural Resources Council of Athabascan Tribal Governments
Ben Mulligan, Deputy-Commissioner, ADF&G
Aaron Poetter, Fish and Game Coordinator, Wildlife Conservation, ADF&G
Jill Klein, Alaska Regional Subsistence Coordinator, USFWS
Boyd Blihovde, Refuge Supervisor, USFWS
Diloola Erickson, Tanana Chiefs Conference
Deena Jallen, Summer Area Management Biologist, ADF&G
Matthew Olson, Fall Area Management Biologist, ADF&G
Eva Patton, Regional Subsistence Program Manager, National Park Service
Kevin Pendergast, State Director, Bureau of Land Management

Also distributed to Tribal and City governments and any interested parties. If you did not receive this directly and want to, please contact Keith Herron.