

WP26–78 Executive Summary	
General Description	Wildlife Proposal WP26-78 requests changing the boundary between Units 25C and 25D. <i>Submitted by: the Office of Subsistence Management.</i>
Proposed Regulation	<p>§100.26(n)(25) Unit 25</p> <p><i>(C) Unit 25C consists of drainages into the south bank of the Yukon River upstream from Circle to the Subunit 20E boundary, the Birch Creek drainage upstream from the Steese Highway bridge (milepost 147), and then following the Steese Highway to the northeast staying on the north side of the road from the Steese Bridge at milepost 147 to Circle; the Preacher Creek drainage upstream from and including the Rock Creek drainage, and the Beaver Creek drainage upstream from and including the Moose Creek drainage.</i></p> <p><i>(D) Unit 25D consists of the remainder of Unit 25</i></p>
OSM Conclusion	Support
Eastern Interior Alaska Subsistence Regional Advisory Council Recommendation	Support
Interagency Staff Committee Comments	The Interagency Staff Committee found the analysis to be a thorough and accurate evaluation of the proposal and that it provides sufficient basis for the Regional Advisory Council recommendation and the Federal Subsistence Board action on this proposal.
ADF&G Comments	Support
Written Public Comments	None

Wildlife Analysis WP26-78

ISSUE

Wildlife Proposal WP26-78, submitted by the Office of Subsistence Management (OSM), requests changing the boundary between Units 25C and 25D (**Map 1**).

Proponent Statement

The proponent states that the Alaska Board of Game (BOG) adopted Proposal 120 at their March 2025 meeting to change the subunit boundary between Units 25C and 25D. This proposal would maintain alignment with State subunit boundaries, reducing regulatory complexity and potential confusion.

Current Federal Regulations

§100.26(n)(25) Unit 25

(C) Unit 25C consists of drainages into the south bank of the Yukon River upstream from Circle to the Subunit 20E boundary, the Birch Creek drainage upstream from the Steese Highway bridge (milepost 147), the Preacher Creek drainage upstream from and including the Rock Creek drainage, and the Beaver Creek drainage upstream from and including the Moose Creek drainage.

(D) Unit 25D consists of the remainder of Unit 25.

Proposed Federal Regulations

§100.26(n)(25) Unit 25

*(C) Unit 25C consists of drainages into the south bank of the Yukon River upstream from Circle to the Subunit 20E boundary, the Birch Creek drainage upstream from the Steese Highway bridge (milepost 147), **and then following the Steese Highway to the northeast staying on the north side of the road from the Steese Bridge at milepost 147 to Circle**; the Preacher Creek drainage upstream from and including the Rock Creek drainage, and the Beaver Creek drainage upstream from and including the Moose Creek drainage.*

(D) Unit 25D consists of the remainder of Unit 25.

Current State Regulations

5 AAC 92.450. Description of game management units.

(C) Unit 25C consists of drainages into the south bank of the Yukon River upstream from Circle to the Subunit 20E boundary, the Birch Creek drainage upstream from the Steese Highway bridge (milepost 147), and then following the Steese Highway to the northeast staying on the north side of the road from the Steese Bridge at milepost 147 to Circle; the Preacher Creek drainage upstream from and including the Rock Creek drainage, and the Beaver Creek drainage upstream from and including the Moose Creek drainage.

(D) Unit 25(D) consists of the remainder of Unit 25.

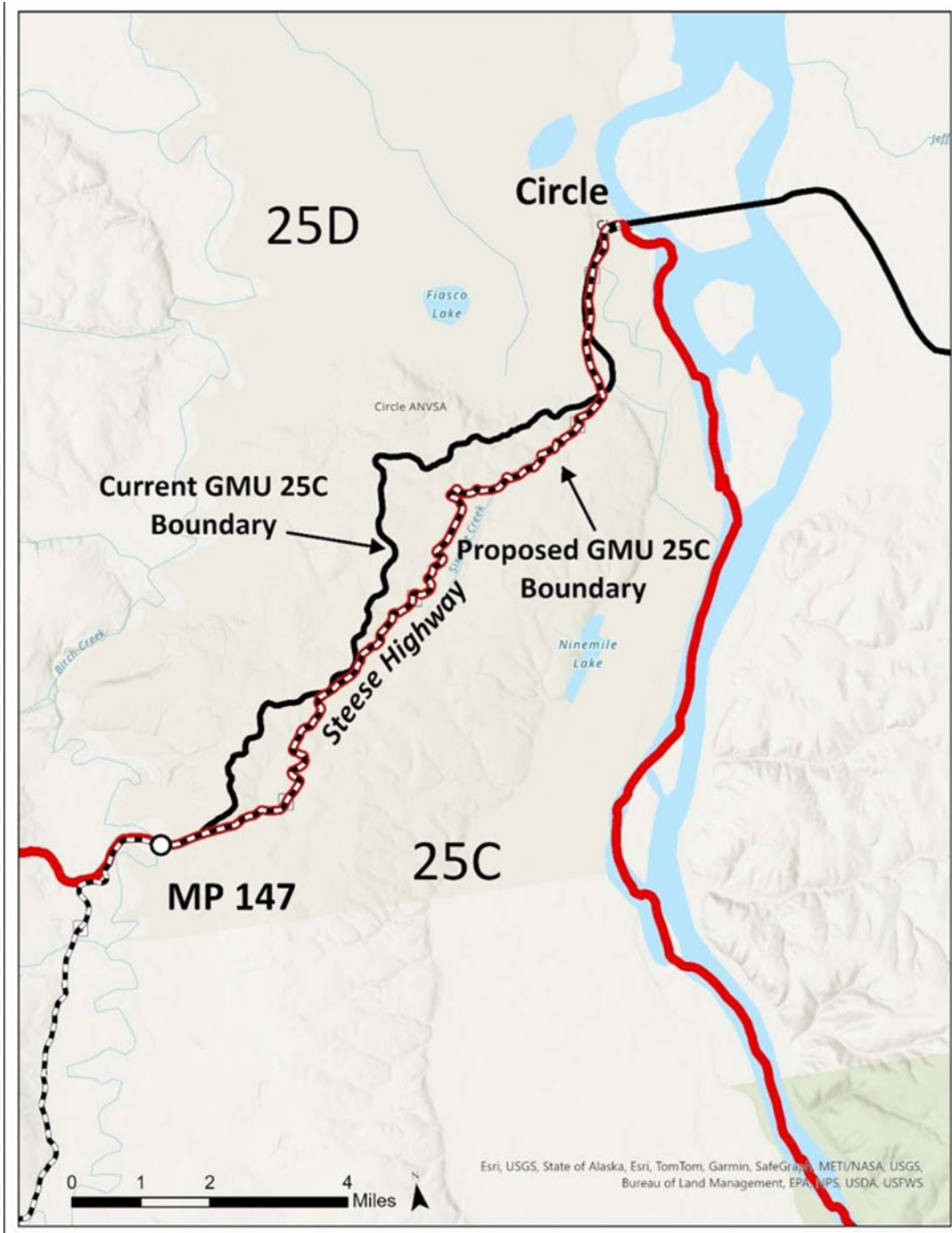
Extent of Federal Public Lands

Unit 25C is comprised of approximately 76% Federal public lands that consist of 67% Bureau of Land Management (BLM) managed lands, 8% National Park Service (NPS) managed lands, and 1% U.S. Fish and Wildlife Service (USFWS) managed lands.

Unit 25D is comprised of approximately 63% Federal public lands that consist of 62% USFWS managed lands and 1% BLM managed lands.

Current Events

At its March 2025 meeting, the BOG adopted Proposal 120 to change the subunit boundary between Units 25C and 25D (**Map 1**, BOG 2025), effective July 1, 2025. The BOG adopted this boundary change to reduce confusion for users over where the boundary is located. This change misaligned Federal and State subunit boundaries.



Map 1. Proposed changes to the Units 25C and 25D boundaries.

Discussion and Effects

If this proposal is adopted Federal subunit boundaries between Units 25C and 25D will be modified to align with recent changes to these boundaries under State regulations. This will have no impact on

wildlife populations or federally qualified subsistence users' opportunity as the affected area contains no Federal public land. However, it will reduce regulatory complexity and confusion by aligning State and Federal regulations as directed by Executive Order 14153 3(b)(xxii) to "ensure to the greatest extent possible that hunting and fishing opportunities on Federal lands are consistent with similar opportunities on State lands."

OSM CONCLUSION

Support Proposal WP26-78.

Justification

The Alaska Board of Game adopted Proposal 120 at their March 2025 meeting to change the subunit boundary between Units 25C and 25D. This proposal maintains alignment with State subunit boundaries, reducing regulatory complexity and potential confusion.

LITERATURE CITED

Alaska Board of Game. 2025. Transcripts of Alaska Board of Game proceedings. March 25, 2025. Anchorage Egan Civic & Convention Center, Anchorage, AK.

SUBSISTENCE REGIONAL ADVISORY COUNCIL RECOMMENDATIONS

Eastern Interior Alaska Subsistence Regional Advisory Council

The Council voted to **support** WP26-78. They noted that this is a housekeeping proposal to align the unit boundaries with State regulations. It will reduce regulatory complexity and make it easier for everyone.

INTERAGENCY STAFF COMMITTEE

The Interagency Staff Committee found the analysis to be a thorough and accurate evaluation of the proposal and that it provides sufficient basis for the Regional Advisory Council recommendation and the Federal Subsistence Board action on this proposal.

ALASKA DEPARTMENT OF FISH AND GAME COMMENTS

Support. No comment submitted.

This page intentionally left blank