



# Federal Subsistence Board News Release



U.S. Fish and Wildlife Service  
Bureau of Land Management  
National Park Service  
Bureau of Indian Affairs

Forest Service

**For Immediate Release:**  
May 16, 2025

**Contact:** Spencer Rearden  
(907) 543-3151  
Spencer\_rearden@fws.gov:

## Kuskokwim River Mainstem Fishing Opportunities

Pursuant to authority delegated by the Federal Subsistence Board, the Yukon Delta National Wildlife Refuge (YDNWR) In-Season Manager, hereby announces five gillnet fishing opportunities within the YDNWR boundary in the Kuskokwim River mainstem for **Federally qualified subsistence users only**:

### Set gillnet:

- **June 3, 2025 07:00 a.m. to 11:00 p.m.**
- **June 6, 2025 07:00 a.m. to 11:00 p.m.**
- **June 9, 2025 07:00 a.m. to 11:00 p.m.**

During these three opportunities, gillnets are restricted to **set gillnets** with 6-inch or less mesh, 75 feet or less in length, and may not exceed 45 meshes in depth. Additionally, set gillnets must be attached to the bank, oriented perpendicular to the river and may not be operated more than 100 feet from the ordinary high-water mark.

### Gillnet (drift and/or set):

- **June 12, 2025 07:00 a.m. to 07:00 p.m.**
- **June 16, 2025 07:00 a.m. to 07:00 p.m.**

During these two opportunities, gillnets are restricted to 6-inch or less mesh and may not exceed 45 meshes in depth and 50 fathoms (300-feet) in aggregate (total set and drift gillnet) length below the Johnson River and 25 fathoms (150 feet) in aggregate (total set and drift gillnet) length above the Johnson River.

Attached with this news release are two maps of the gillnet fishing and closure areas. Federally qualified subsistence users may retain all salmon during these opportunities. After each gillnet opportunity expires, Kuskokwim waters revert to closed under FSA-YD-25-01. Additional harvest opportunities for federally qualified subsistence users may be announced by subsequent news releases.

The salmon bearing tributaries and areas listed in FSA-YD-25-01 will remain closed to gillnets and the harvest of Chinook, Chum, and Coho Salmon during these gillnet opportunities. Fishing from tributaries not listed in FSA-YD-25-01 is restricted to fishing 100 yards upriver from the mouth of the river (confluence with the main stem Kuskokwim River).



# Federal Subsistence Board News Release



U.S. Fish and Wildlife Service  
Bureau of Land Management  
National Park Service  
Bureau of Indian Affairs

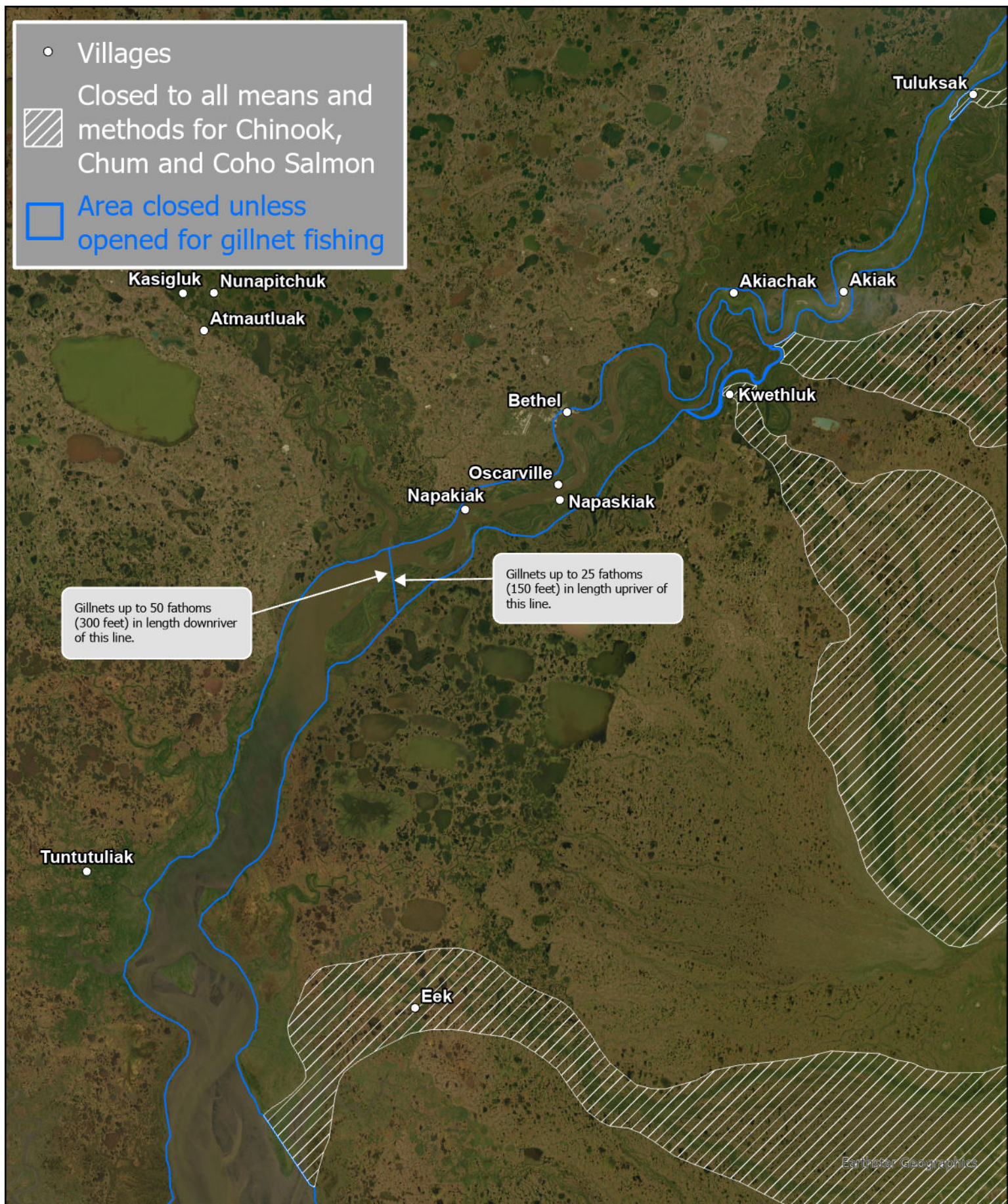
Forest Service

Information about the Federal Subsistence Management Program may be found on the web at [www.doi.gov/subsistence](http://www.doi.gov/subsistence) or by visiting [www.facebook.com/subsistencealaska](https://www.facebook.com/subsistencealaska).

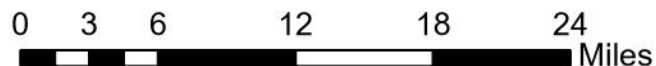
**Missing out on the latest Federal subsistence issues?** If you'd like to receive emails and notifications on the Federal Subsistence Management Program you may subscribe for regular updates by emailing [fws-fsb-subsistence-request@lists.fws.gov](mailto:fws-fsb-subsistence-request@lists.fws.gov).



# Lower River Gillnet Fishing and Closure Area

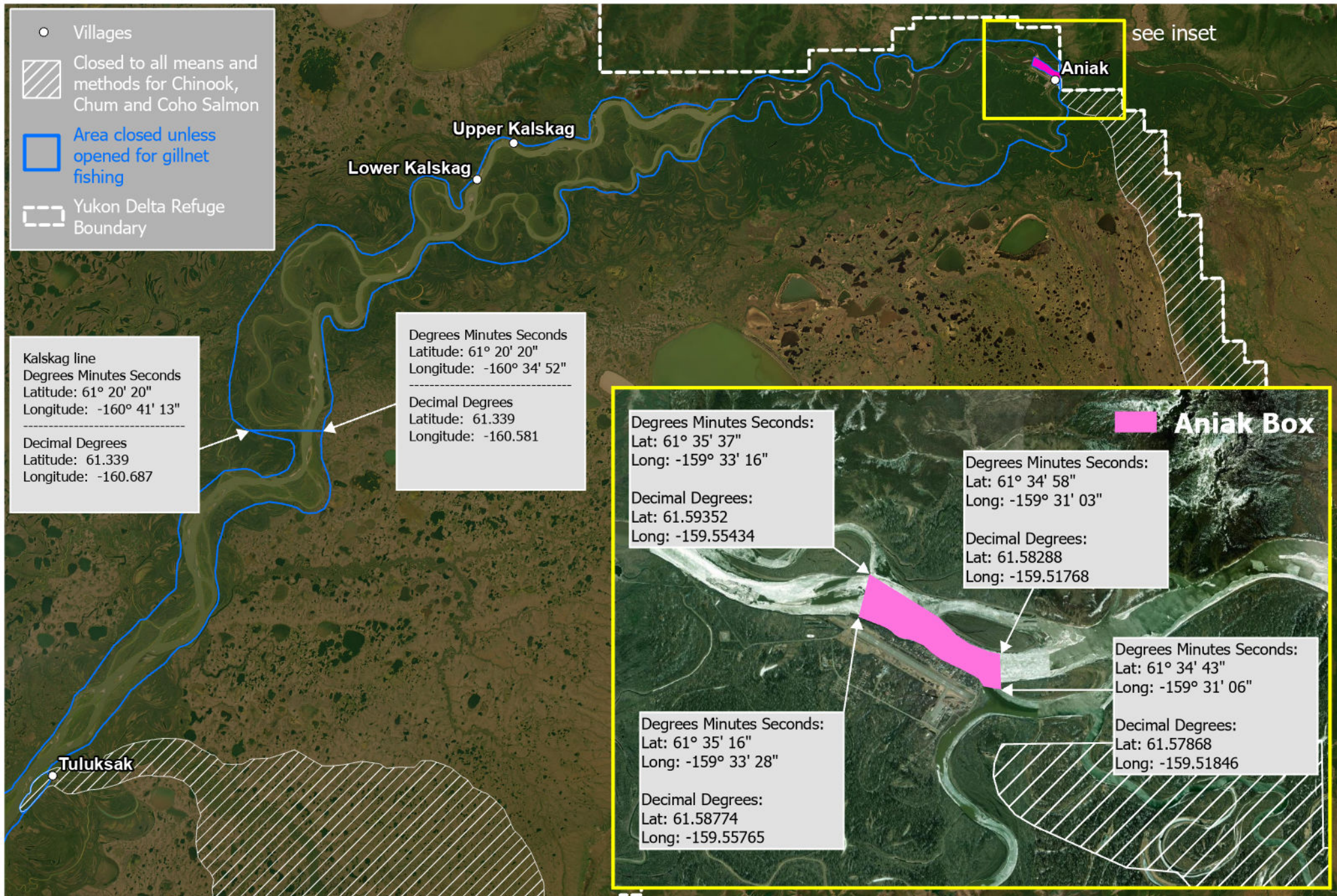


While the U.S. Fish & Wildlife Service makes every effort to represent the data shown on these maps as completely and accurately as possible, the USFWS gives no warranty, expressed or implied, as to the accuracy, reliability, or completeness of these data. In addition, the USFWS shall not be held liable for improper or incorrect use of the data described and/or contained herein. Graphical representations provided by the use of this data do not represent any legal description of the data herein and are provided only as a general representation of the data. Descriptions presented in special actions supersede any depictions provided in this map.





# Middle River Gillnet Fishing and Closure Area



While the U.S. Fish & Wildlife Service makes every effort to represent the data shown on these maps as completely and accurately as possible, the USFWS gives no warranty, expressed or implied, as to the accuracy, reliability, or completeness of these data. In addition, the USFWS shall not be held liable for improper or incorrect use of the data described and/or contained herein. Graphical representations provided by the use of this data do not represent any legal description of the data herein and are provided only as a general representation of the data. Descriptions presented in special actions supersede any depictions provided in this map.

