

From: [Everson, Margaret E](#)
To: [Tanner, John R](#)
Subject: Fwd: Background on Lincoln Memorial
Date: Monday, April 27, 2020 7:55:46 PM
Attachments: [Lincoln Memorial Guidelines for Special Events and Demonstrations.pdf](#)
[ATT00001.htm](#)

Sent from my iPhone

Begin forwarded message:

From: "Reinbold, Jeffrey P" <Jeff_Reinbold@nps.gov>
Date: April 27, 2020 at 7:33:52 PM EDT
To: "Everson, Margaret E" <margaret_e_everson@fws.gov>, "Zerzan, Gregory P" <gregory.zerzan@sol.doi.gov>
Subject: Background on Lincoln Memorial

Margaret and Greg:

I dug into this to become more familiar with it myself. I've summarized background information from my team and referenced regulations or court cases where possible. Our guidance is based in 36 CFR § 7.96 - National Capital Region. I've also attached the Lincoln Memorial Event Guidelines, which includes policy guidance. We're updating the Event Guidelines but this is what's currently in place.

The only activity we allow in the Lincoln Chamber beyond "casual park use by visitors or tourists that is not reasonably likely to attract a crowd or onlookers" is on Lincoln's Birthday (g)(3)(ii)(B). All other activities are considered demonstrations or special events. NPS has done limited filming in the Chamber pertaining to Lincoln and the Memorial for educational programs as official government speech related to constitutional doctrine. Limited news gathering that is open to a pool or numerous networks has occurred. We do not allow speech that would draw a crowd or require closure of the Chamber as numerous opportunities for such speech exist outside the Memorial. We apply these same conditions at the Chamber of the Thomas Jefferson Memorial, which was upheld in *OBERWETTER v. HILLIARD* (<https://www.leagle.com/decision/infeco20100127b62>).

The definitions included in 7.96 are as follows:

(2)(g) Demonstrations and special events –

(1) Definitions.

(i) The term "demonstration" includes demonstrations, picketing, speechmaking, marching, holding vigils or religious services and all other like forms of conduct that involve the communication or expression of views or grievances, engaged in by one or more persons, the conduct of which is reasonably likely to draw a crowd or onlookers. This term does not include casual park use by visitors or tourists that is not reasonably likely to attract a crowd or onlookers.

(ii) The term "special events" includes sports events, pageants, celebrations, historical reenactments, regattas, entertainments, exhibitions, parades, fairs, festivals and similar events (including such events presented by the National Park Service), which are not demonstrations under paragraph (g)(1)(i) of this section, and which are engaged in by one or more persons, the conduct of which has the effect, intent or propensity to draw a crowd or onlookers. This term also does not include casual park use by visitors or tourists which does not have an intent or propensity to attract a crowd or onlookers.

Per (g)(3)(ii), demonstrations and special events are not allowed in the following other park areas:
(B) The Lincoln Memorial, which means that portion of the park area which is on the same level or above the base of the large marble columns surrounding the structure, and the single series of marble stairs immediately adjacent to and below that level, except for the official annual commemorative Lincoln birthday ceremony.

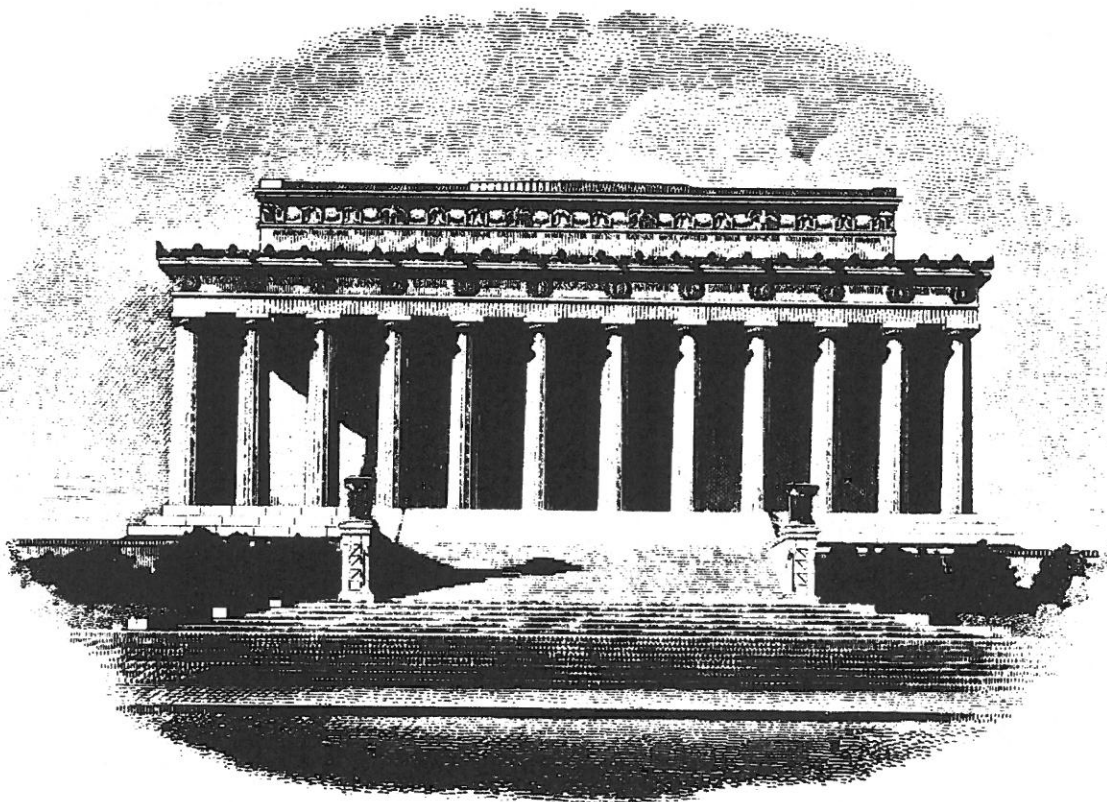
Per past court cases (*A.N.S.W.E.R. Coalition v Jewell*) <

5047-1655969.pdf> is the most recent), we permit all NPS activities as well and abide by the restricted areas in 7.96. Margaret, I got a couple things twisted around earlier today. The event we denied in the Chamber was from then candidate Senator Bernie Sanders. The President Obama event was outside the Chamber.

I have some ideas we can discuss tomorrow.
Jeff

.....
Jeff Reinbold, Superintendent
National Mall and Memorial Parks
900 Ohio Drive SW | Washington DC 20024
jeff_reinbold@nps.gov | 202.245.4661

LINCOLN MEMORIAL
GUIDELINES FOR SPECIAL EVENTS AND DEMONSTRATIONS



December 2008
Revised March 2014

National Park Service
National Mall and Memorial Parks
900 Ohio Drive, S.W.
Washington, DC 20024-2000

TABLE OF CONTENTS

I. INTRODUCTION	1
a. BACKGROUND INFORMATION.....	1
II. SITE ACCESS.....	2
a. APPROACH TO MEMORIAL	2
b. SUBMITTAL REQUIREMENTS.....	2
III. HOURS OF OPERATION	2
a. MEMORIAL HOURS	3
b. DELIVERIES	3
IV. REFRESHMENTS	3
a. RESTRICTIONS.....	3
V. SMOKING	3
VI. TEMPORARY PROTECTION	3
1. HARD SURFACES	3
a. MATERIALS FOR TEMPORARY PROTECTION.....	3
b. HAND-HELD CAMERA EQUIPMENT	4
c. OIL OR HYDRAULIC FLUID LEAKS	4
d. ALLOWABLE LIVE LOAD	4
e. SUBMITTAL REQUIREMENTS	5
2. LANDSCAPE	5
a. TREE, SHRUB, AND TURF PROTECTION.....	5
b. HEAVY EQUIPMENT NEAR TREES,SHRUBS AND TURF.....	6
c. TURF PROTECTION.....	7
d. IRRIGATION SYSTEM	9
e. MITIGATION OF DAMAGED AREAS	9
f. SUBMITTAL REQUIREMENTS	9
VII. TEMPORARY STRUCTURES	9
a. TENTS AND CHAIRS.....	10
b. METAL STAGING ELEMENTS, ETC:).	11
c. SECURING EQUIPMENT, STAGING ELEMENTS, ETC:	11
d. TEMPORARY STAGES ON TURF:	11
e. POWER SUPPLY.....	12
f. DELIVERY OF MATERIALS.....	12
g. SUBMITTAL REQUIREMENTS.....	12
VIII. LIGHTING	13
a. EXISTING LIGHTING	13
b. TEMPORARY LIGHTING.....	13
c. HEIGHT LIMIT	13

d. POWER SUPPLY	13
e. SUBMITTAL REQUIREMENTS	13
IX. UTILITIES.....	13
a. ENVIRONMENTAL SAFETY	13
b. SANITARY SEWERS	13
X. VIBRATION RESTRICTIONS	14
a. RESTRICTIONS.....	14
b. SUBMITTALS REQUIREMENTS.....	14
XI. LINCOLN CIRCLE	14
a. TEMPORARY PROTECTION	15
b. RESTRICTIONS	15
c. DELIVERIES.....	15
XII. THE MEMORIAL (STRUCTURE)	15
1. APPROACHWAY.....	15
a. TEMPORARY PROTECTION	15
b. MOTORIZED VEHICLES.....	15
b. ALLOWABLE LIVE LOAD	15
c. SUBMITTAL REQUIREMENTS	16
2. RAISED TERRACE.....	16
3. MARBLE STEPS	16
4. GRANITE STEPS AND GRANITE LANDINGS.....	16
a. TEMPORARY PROTECTION	16
b. ALLOWABLE LIVE LOAD	16
c. SUBMITTAL REQUIREMENTS	16
5. STATUARY CHAMBER	17
a. SUBMITTAL REQUIREMENTS	17
6. COLONNADE.....	17
7. ELEVATOR	17
a. SUBMITTAL REQUIREMENTS	17
8. EXHIBIT SPACE	17
a. SUBMITTAL REQUIREMENTS	17
9. REST ROOMS.....	18
10. ROOF.....	18
XIV. SITE CLEAN-UP	18
TRASH/DEBRIS PICK-UP.....	18
b. SUBMITTAL REQUIREMENTS	18
XV. NATIONAL PARK SERVICE - POINTS OF CONTACT	18
a. NATIONAL MALL AND MEMORIAL PARKS	18
XVI. DRAWINGS.....	18

XVII. GLOSSARY OF TERMS.....	33
-------------------------------------	-----------

I. INTRODUCTION

a. BACKGROUND INFORMATION: The Lincoln Memorial is one of the most important buildings in the world. A shrine to the memory of the 16th President of the United States, the Lincoln Memorial is designed in the style of a Greek temple into whose walls are carved the immortal words of the Gettysburg Address and Second Inaugural. Dedicated on May 20, 1922, the Lincoln Memorial was designed by Henry Bacon and contains the great marble statue of the Great Emancipator by Daniel Chester French. Built with 36 marble columns representing the States of the Union at the time of Lincoln's death, this memorial also plays a key role in the composition of Washington's Monumental Core and stands on the axis of the Washington Monument and the United States Capitol.

The National Park Service (NPS) is statutorily obligated to preserve this symbol of our national heritage for future generations. As stewards for the Lincoln Memorial, the NPS is responsible to ensure that it is not damaged, as well as to preserve an appropriate atmosphere of calm, tranquility, and reverence for its visitors. As such, the NPS and National Mall and Memorial Parks (NAMA), the national park which manages the memorial, requires that all individuals must identify to the NPS precisely how their special event or demonstration proposes to use the authorized portions of the Lincoln Memorial. If the NPS issues a permit for the special event or demonstration, the permittee must comply with NPS regulations and policies, the terms of the permit, and the following Lincoln Memorial Guidelines at all times. No work will be allowed on site until the necessary requirements have been met. Should any damage occur to the memorial or injury to the general public, the permit holder shall be held liable.

NPS regulations and policies govern activities at the Lincoln Memorial and its surrounding park areas. Applicants should also be aware of these regulations and policies, which include:

- 36 C.F.R. § 7.96(g)(3)(ii)(B) which states that, except for the official annual commemorative Lincoln birthday celebration, that no special event or demonstration is allowed within designated portions of the Lincoln Memorial. These designated prohibited areas consist of that portion of the park area that is on the same level or above the base of the large marble columns surrounding the structure, and the single series of marble stairs immediately adjacent to and below that level (see Drawings 3-5, pages 16-18 depicting the prohibited areas).
- 36 C.F.R. § 7.96(g) which establishes the application process, generally on a first-come first-served basis, for special events and demonstrations on parkland as well as establishes the regulatory basis when an application may be granted or denied.
- National Park Service, National Capital Region, Requirements for Special Events Held on Parkland (Latest Edition).

These Lincoln Memorial Guidelines¹ supplement the NPS regulations and policies, and deal with

¹ The legal authority for the Guidelines is 16 U.S.C. §§ 1-3, 36 C.F.R. §§ 1.5, 7.96(g), NPS 2006 Management

both general and specific requirements to ensure the protection of the Lincoln Memorial and must be followed by all applicants who are granted a permit. These Guidelines also help ensure that the necessary documentation is provided to the NPS regarding a request to use areas around the Lincoln Memorial. Accurate and detailed documentation by the applicant is essential. This documentation must be submitted in a timely manner so that the NPS may be able to assess the impact on this historic resource.

An applicant should generally submit all documentation at least thirty (30) days prior to the proposed event. Documentation must be specific and detailed on what is proposed and how it relates to the specific architectural features of the memorial. The permit process will be administered by NAMA's Division of Permits Management. Please consult Drawings 1-19, on pages 14-32, as a reference for the features discussed below.

II. SITE ACCESS

a. APPROACH TO MEMORIAL: Site access for general delivery and hauling of materials shall be from the south side of the memorial, via Independence Avenue. Use of the Arlington Memorial Bridge, from the west, must be coordinated with the Office of the Superintendent, George Washington Memorial Parkway: (703)285-2600, (see Drawing 1, page 14 for Vicinity Map).

Buses belonging to the transportation concessionaire under contract to the NPS, shall have full, unobstructed access to the Lincoln Memorial throughout the set up and breakdown of a special event or demonstration. Depending on the size or magnitude of an event, the NPS will determine if the transportation concessionaire will continue service during the course of the event.

The permit applicant must receive prior, written approval from the NPS if traffic is to be blocked at any time during preparation for, during the course of, and after a special event or demonstration (at any location in the immediate vicinity of the memorial). If District of Columbia streets are to be blocked, the appropriate authorities must be notified as well.

No parking is allowed at the Lincoln Memorial without prior, written approval from the NPS.

b. SUBMITTAL REQUIREMENTS: A plan of how the site will be approached and how traffic will be controlled is required for each proposed event. In this submittal, information documenting the path of vehicular traffic at the memorial (on the north, south and west sides of Lincoln Circle, as well as Henry Bacon Drive, 23rd Street, Daniel Chester French Drive, Parkway Drive, Arlington Memorial Bridge) during preparation for, during the course of, and after a special event or demonstration, is required. Rules and regulations for District of Columbia streets also shall be observed. Signs directing vehicular and pedestrian traffic shall be furnished, with text and locations of signs indicated on the plan.

III. HOURS OF OPERATION

a. MEMORIAL HOURS: The memorial is open seven days/week and on all holidays with the exception of December 25. Hours of operation at the memorial are from 9:30 a.m. to 12:00 a.m. The public often visits the site before and after these times. Closing or obstructing the entrance to the memorial is strictly prohibited without prior, written approval from the NPS.

b. DELIVERIES: Deliveries of materials shall occur so as to not adversely affect daily operations at the Lincoln Memorial. No deliveries shall be made after hours without prior, written approval from the NPS.

IV. REFRESHMENTS

a. RESTRICTIONS: Food or drink (other than water) is not permitted on any of the hard surfaces of the Lincoln Memorial (see Section VI.1. TEMPORARY PROTECTION, HARD SURFACES, page 3). These surfaces include the east plaza area, the upper and lower approachway, the raised terrace walls, the colonnade and the marble steps leading to the memorial chamber.

The concessions food service kiosks located on the south and north sides of the memorial on Daniel Chester French Drive and Henry Bacon Drive shall be allowed to operate throughout a special event or demonstration. The permit holder is prohibited from blocking either of these structures at any time.

V. SMOKING

Smoking is not allowed at the Lincoln Memorial within the security perimeter, which includes the plaza, the upper approachway, the raised terrace level, the colonnade and the chamber. This restriction applies to all members of the general public, contractors, and construction workers. A designated smoking area must be approved by the NPS. Examples of acceptable areas include construction staging areas, boneyards, and lay down areas.

VI. TEMPORARY PROTECTION

Temporary protection is essential for preservation of the historic Lincoln Memorial. Materials must be used to cover or safeguard the hard surfaces and landscape of the memorial and its grounds.

1. HARD SURFACES

Hard surfaces include those made out of stone such as marble, granite, cobblestone (the rounded pebbles found at the approachway), asphalt, and concrete. Hard surfaces include those horizontal and vertical surfaces within the memorial proper and the surrounding steps, plazas, walls, benches, coping (top of walls), ramps, walkways, and roadways.

a. MATERIALS FOR TEMPORARY PROTECTION: Temporary protection of all hard surfaces affected by the construction or erection of staging elements, sound towers, camera equipment, cranes, lighting structures, miscellaneous equipment, or large crowds, must be

provided. All protective pads or cushioning devices shall be non-staining.

The following materials must be used to protect hard surfaces, when any of the components listed above are used for a special event or demonstration:

POLYSTYRENE: Provide 3" extruded, solid core, polystyrene, at 60 pounds per square inch (psi), over affected hard vertical surfaces, site furnishings, features and the Alaska/Hawaii commemorative stone and MLK inscription (see Sections XII.1. and XII.4. THE MEMORIAL, THE APPROACHWAY and GRANITE STEPS AND GRANITE LANDINGS, pages 10-11), and under protective plywood and/or neoprene padding.

DECKING: Provide rigid, interlocking decking such as 3/4" Duradeck-type plastic matting or similar NPS-approved decking over interior and exterior hard horizontal surfaces requiring protection.

WEIGHING DOWN OF TEMPORARY PROTECTION: Protective materials shall be weighed down so that they do not blow away. Non-freezing, no-staining liquid approved by the NPS (water treated with bio-degradable antifreeze) in plastic containers shall be used as weighing elements. Sand bags are not permitted for this purpose.

b. HAND-HELD CAMERA EQUIPMENT: Hand-held camera equipment or tripods require rubber tipping or matting, when placed on hard surfaces (see Section VI.1. TEMPORARY PROTECTION, HARD SURFACES, page 3) at the memorial. Camera equipment with tripods/stands are prohibited within the restricted area of the Memorial above the white marble steps and interior chamber. Permits are required for limited use with hand-held equipment only inside the restricted area.

c. OIL OR HYDRAULIC FLUID LEAKS: If materials are delivered by a motorized vehicle or motorized equipment is used anywhere on the grounds of the memorial, all vehicles and equipment must be fitted with a drip pan and special caution shall be taken to avoid oil or hydraulic fluid leaks. Temporary protection of hard surfaces (see Section VI.1. TEMPORARY PROTECTION, HARD SURFACES, page 3) shall be used where motorized vehicles are operating. Should a leak of this type occur, the permit holder shall be held liable for clean up, at no expense to the NPS.

Hard surfaces must also be protected from staining caused by the exhaust of motorized vehicles and equipment.

d. ALLOWABLE LIVE LOAD: All allowable live loads (movable weight including equipment, vehicles, temporary structures, and people) outlined in the following sections of these guidelines, must be strictly followed. Calculations, completed by a registered, professional engineer (from one of the following jurisdictions: State of Maryland, Commonwealth of Virginia, or District of Columbia), certifying that the allowable maximum live load is being observed, shall be submitted for approval.

e. SUBMITTAL REQUIREMENTS: The permit applicant shall submit a detailed program which specifically describes and illustrates proposed procedures, means, and methods for temporarily protecting each affected area of the memorial.

2. LANDSCAPE

To prevent adverse impacts associated with event activities on the lawn, trees, shrubs and utilities located within the Lincoln Circle, no setup or staging of logistical equipment is permitted in this area. Exceptions to this restriction may be made if consistent with the NPS regulations at 36 C.F.R. §§ 7.96(g)(4)(iii), (5)(iv) as determined by the NPS.

Lawn, trees, shrubs, and the irrigation system, electric conduits, and water mains located outside the Lincoln Circle shall be protected from adverse impacts associated with event activities. Protection practices/requirements shall include at a minimum items a-f below. To prevent compaction of soil, which leads to damage of turf, trees, and shrubs, major visitor activity shall be limited. The permit holder is liable for all damage done to the existing trees, shrubs, soil structure, and ground covers. Restricting activities to designated areas will protect the landscape and prevent additional cost to the permit holder (See Drawings for extent of landscaping).

a. TREE, SHRUB, AND TURF PROTECTION:

– ROOT PROTECTION ZONES:

- PREPARATION: The NPS will identify designated Root Protection Zones for the permit holder, prior to any special event or demonstration. Root protection zones will be determined by an industry standard of 1.5' of protection for every 1" of diameter at breast height of each tree (DBH). The permit holder is then responsible for marking the locations for the stakes for fencing. The NPS will review the post locations and installation specifications before fencing is put into place to insure that the installation will not cause damage to the roots of trees and shrubs. With NPS approval, temporary fencing can be installed by the permit holder as defined below.
- TEMPORARY FENCE: Root Protection Zones shall be constructed of black welded wire fence, openings 1" by 2", with the longer dimension vertical. This fence shall be 4'-0" tall and installed at designated locations to avoid the irrigation system. Posts shall be steel posts. Fence shall be inspected on a regular basis to maintain a vertical and taut position. (Black or green wooden snow fence may be approved for some events, depending on duration and nature of the event.)
- DIMENSIONS: See Drawings 6-8, pages 19-21, for the extent of existing trees, shrubs, and ground covers, and the DBH of each tree. DBH is a standard landscaping term meaning the diameter of the trunk of a tree at the height of the average person's chest.
- WARNING SIGNS: Provide signs every 25'-0" on center, with text in English

and Spanish:

**TREE PROTECTION ZONE
KEEP OUT
DO NOT REMOVE OR RELOCATE FENCE**

**Zona de protección de árboles
Manténgase fuera de esta area
No retire o remueva la cerca**

Signs shall be 18" x 24", in green lettering, in Times Roman font, on a white background.

b. HEAVY EQUIPMENT NEAR TREES, SHRUBS AND TURF: Prior to construction activity, the NPS must approve the use of any heavy equipment (crane, back hoe, etc.) placed under or near trees or shrubs. Please note that approval for this type of activity is rare. To protect the turf, parking or operation of equipment on parkland turf is generally not permitted without protective decking^{2,3}. If approval is granted, the permit holder must comply with a number of regulations.

- Vehicle protective decking: RGT Pod, Matrax HD, ArmorDeck 3, or approved equal are used. Such products will be light in color, flat backed, interlocking, and heavy duty. Two layers of Enkamat or approved equal is required underneath. This decking arrangement is only allowed to be in place for a maximum of 24 hours.
- Crane Outrigger protection: Each time the crane is positioned, its down rigger's should have four layers of Enkamat or approved equal and two layers of ¾" plywood under them. Tarps should be placed under the crane at all times in case of a spill/leak. This decking use is allowed to be in place for no more than 24 hours. Cranes are to stay 5' off the edge of any hardscape whether operating on the hardscape, which is standard practice, or operating on the turf which would be under only special circumstances.



² Vehicles are permitted on hardscape areas such as walkways if allowed in the terms of the Permit. Vehicle operators must provide protection for hardscape areas that will be used to host any vehicles. The equipment weight, number of tires, estimated tire pressure, and the type of material used for protection must be discussed with the NPS Permit Specialist prior to any staging.

³ Prohibition of vehicles on lawns and fields is a best practice for protecting the health of the turf; this is practiced in major urban parks and designed landscapes throughout the country. Examples of parks prohibiting vehicles on turf include: Central Park (New York, NY), Millennium Park (Chicago, IL), and Patterson Park (Baltimore, MD).

c. TURF PROTECTION: For the purpose of protection, any area not paved shall be treated as lawn. No heavy equipment (cranes, backhoes, etc.), vehicles or stock piling of materials is permitted on turf areas without the approval of the NPS. Limited activity of this sort may only take place with prior, written approval from the NPS, in defined areas and with load spreading techniques per VI. 2b.above. For the protection of the resource, the National Park Service must limit damage to the turf. Events with more than 500 people expected, or tents larger than 500 sq ft, or lasting longer than 24 hours, or requiring flooring, or chair setup will require protective decking for the turf.

Temporary covering of turf substantially reduces wear injury by protecting the plant from tearing and abrasion due to traffic. Temporary covering helps reduce soil compaction although it is not eliminated. Set up for events are encouraged to be configured to avoid concentrating foot traffic and the need for protective decking.

Acceptable Turf Decking Systems: Under most circumstances the type of protection required will be products such as Terraplas, ArmorDeck 1, RGT LED Pod, or approved equal, are ADA-compliant, interlocking mats that are translucent to allow UV light to pass through or provide light to the grass below. These types of materials are considered leading turf protection systems for stadia and other venues such as public parks, racecourses, and private events and are used for walkways, exhibitions, show stands and hospitality areas. These products are quick and easy to fit; allows passage of air, light, and water; perform to high public safety standards; and protect turf from large crowds and structures.

While temporary turf decking helps prevent some damage if used for a short period of time, covering the turfgrass still results in additional stressors such as reduced airflow, restricted moisture infiltration, heat buildup, and reduced light, so seasonally adjusted turf cover time limits are needed.



Pedestrian flooring shall follow the guidelines below:

- Comprised of single-sided white high density yet translucent polypropylene, with a cavity back such as Terraplas, ArmorDeck1, RGT LED Pod or approved equal. Vehicles are not allowed on this type of protective decking.
- Be lightweight—covering must be carried and set in place or removed without vehicular assistance. Hand carts will be allowed on the turf decking.
- Not result in turf damage during removal.
- The cavity back (if specified) must have appropriate clearance above crown of grass (not compress the turf, approximately 1.75” to 2.25”); this depends on the time of year and ground conditions.
- Have holes for air, light, and water to permeate the product.
 - No fabric or other obstructions to turf decking covering holes or blocking light will be allowed below the protective decking.
 - Carpet may be allowed on top of the decking with seasonally defined time

restrictions (see insert below).

Time Limits for Protective Decking

Total turf coverage time including set up:

November 15 to March 14: 10 days

March 15 to May 14: 5 days

May 15 to September 14: 3 days

September 15 to November 14: 5 days

Carpets above the decking with seasonally defined time limits.

May 15 to September 14 carpet allowed for 6 hours after 6 pm

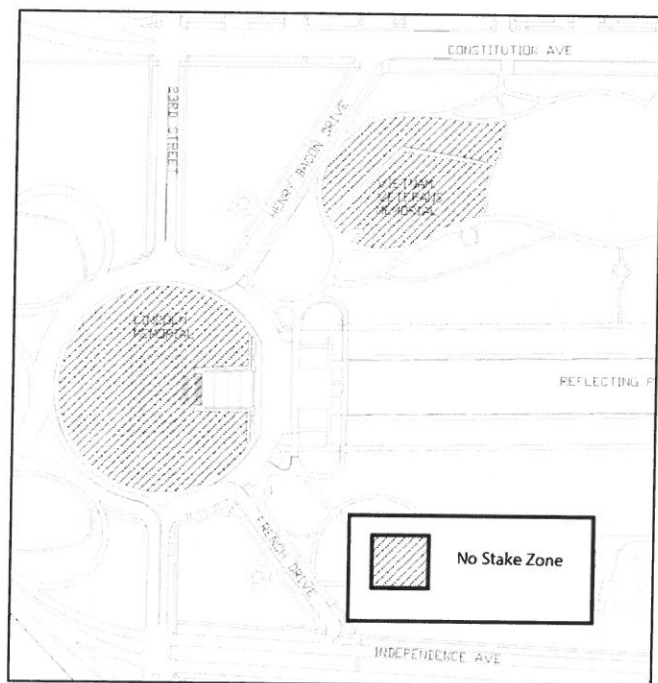
September 15 to May 14 carpet allowed for 12 hours.

- Installed no more than one (1) day prior to the event. Therefore, installation after five (5) pm and working through the night to minimize turf coverage time is permitted with approval from the Superintendent's office.
 - The Permittee will be responsible for paying personnel overtime charges related to the assignment of National Park Service employees and US Park Police for monitoring set-up and take down construction or security beyond an eight hour shift or on weekends.
- Plywood is never an acceptable temporary covering. Plywood blocks nearly all irradiance, thereby shutting down the photosynthetic process within the turfgrass plants. This results in unacceptable decline of turfgrass health. In addition, it is unable to interlock.
- Conditions requiring other solutions. There are conditions that warrant a solid back such as some soft soil conditions, temporary cover for equipment access, or extremely hot weather. In this case Matrax HD, ArmorDeck 2, RGT Pod, or equal is acceptable; but plywood is not ever an acceptable material. An approved equal to these would be translucent or white in color, flat backed, and would lock together with adjoining pieces. Time restrictions are the same as with cavity back above.
- Landscape or other fabrics are also not permitted due to their negative affect on the turf. These effects include heat build up, lack of gas exchange, and the restriction of light.



Products proposed must be approved by the NPS Turf Specialist and affirmed through the permitting process (planning, writing) by the Permit Specialist.

d. IRRIGATION SYSTEM: The permit holder shall identify graphically and in writing how the area over the irrigation system is to be used. All sprinkler heads and irrigation lines shall be marked prior to any permitted activity (see Drawings below for irrigation protection – No Stake Zone). If damage occurs to irrigation system, the permit holder is held liable for any repair or replacement, at no expense to the NPS.



e. MITIGATION OF DAMAGED AREAS: Within forty-eight (48) hours of the removal of all equipment and structures at the end of a special event or demonstration, the NPS will conduct a site inspection to determine if any damage has occurred. The permit holder is responsible for all damage to trees, shrubs, turf, irrigation systems, and other utilities. This includes damage resulting from careless operation of equipment, stockpiling of materials, or tracking of grass areas by equipment. Such damaged areas shall be replaced, repaired, or restored by the permit holder, as directed by the NPS, at no expense to the NPS. All work shall be in accordance with NPS standards and specifications.

f. SUBMITTAL REQUIREMENTS: The permit applicant is required to submit drawings which clearly illustrate how the grounds of the memorial are to be used and protected. As previously stated, restricting activities to designated areas will protect the landscape and prevent additional cost to the permit holder.

VII. TEMPORARY STRUCTURES

Temporary structures include any structure constructed and/or assembled at the memorial solely for the purpose of a special event or demonstration. This includes stages, bleachers, podiums, sound towers, light towers, camera stands, structures for video screens, booths, concession stands, tents, etc., built of any material. Temporary structures may not be positioned on the turf within the Lincoln Circle. Temporary structures may be positioned on the inner two turf areas within the lower approachway above the Reflecting Pool with restrictions. To preserve the Lincoln Memorial's monumental center axis viewshed towards the Capitol, the area from the memorial's raised terrace level to the top of the cornice shall remain open and visible to park visitors at all times. Each temporary structure must comply with all Occupational Safety and Health Association (OSHA) standards, as well as local building codes. The height limit for temporary structures shall be no higher than the top of the cornice (see Drawing 2, page 15 for location of cornice and dimensions). The permit holder is responsible for the security and the protection of their individual structure(s).

a. TENTS AND CHAIRS

It is strongly encouraged that structures be placed on Lincoln's hardscape areas where they will not impact the turf; however, the NPS may allow, under permit, structures on turf, if the Permittee's use of structure and equipment follows the turf protection measures as detailed below and in Section VI 2a. Without the necessary resource protection measures, structures are not permitted on turf panels and must be limited to locations on the hardscape surfaces of the Lincoln Memorial.

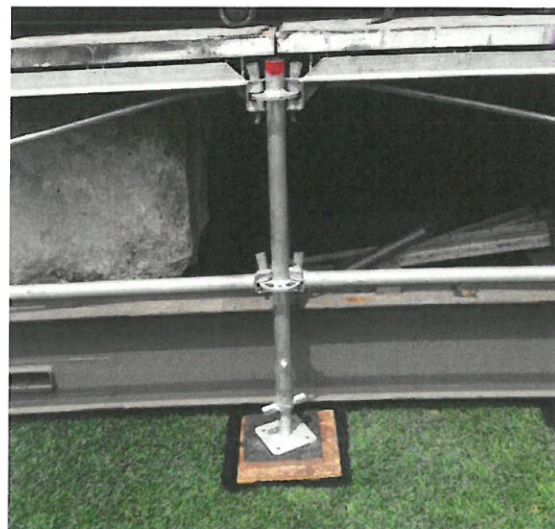
If tents or other temporary structures are allowed on the turf, they must follow the guidelines below:

- Permittee shall provide a certification statement confirming all temporary structures comply with the following requirements: local building/life safety codes, ASCE 7-05, NFPA-101, IBC 2006 and IFC 2006.
- Permittee shall provide drawings for all structures (including foundation/anchoring systems) over 500 square feet in area. Drawings are also required where the total combined area of connected individual structures exceeds 500 square feet. Structures shall be considered connected if they are within 5-feet of each other, share a common foundation/anchor, share a common utility, or are connected by any other means. Temporary walkways shall not be considered when evaluating if structures are connected.
- All temporary structure drawings must be signed and sealed by a professional engineer licensed in the District of Columbia.
- It is strongly encouraged that structures be placed on the park's hardscape areas where they will not impact the turf. However, the NPS may allow, under permit, structures on turf (structures not permitted on center turf areas at WWII, upper circles at Jefferson, Lincoln, and Washington, and the view shed of the Washington Monument), if the Permittee's use of structure and equipment follows the turf protection measures as detailed below. Without the necessary resource protection measures, structures are not permitted on turf and must be limited to locations on the hardscape surfaces.
- If tents or other temporary structures are placed on the turf, they must follow the guidelines below:
- In event areas where there are underground utilities or designated no stake zones, water

filled ballast tanks or concrete blocks will be used on the turf with proper protection decking and seasonal time restrictions. This is to help minimize compaction of the turf by the weight of the ballasts. This also allows maximum access of air, sunlight, and water to the turfgrass.

- Water from tanks may not be dumped on park grounds.
 - Any approved staking cannot take place without a National Park Service official present.
 - Protective decking (guidelines above) will be installed slightly larger than the footprint of the structure and pedestrian pathways to the tent entrance(s).
 - Tent posts, if not placed directly on approved decking (above) will be placed on a 16"x16" wooden pad (3/4" plywood) and two layers of Enkamat 18"x18". Seasonal time limits apply. Event planners should be prepared to sod turf areas in this situation.
 - Tent walls will be put on at the last possible moment before the event. This will allow for air circulation and light penetration for turf health.
 - Chairs, other seating, and other temporary structures will be located on protective decking.
 - All screws, fasteners, and ties should be policed during the build and retained during the removal. They should be made of a non-aluminum or non-plastic material. Cleanup with a magnetic sweeper is required to ensure all fasteners and screws are retrieved.
 - Steel, lumber, vinyl, and other construction materials, etc. should not be left on the turfgrass for a prolonged period of time (more than 4 hours).
- b. METAL STAGING ELEMENTS, ETC: All metal staging elements shall be a non-staining, non-rusting, design. All hard surfaces shall be protected (see Section VI.1. TEMPORARY PROTECTION, HARD SURFACES, page 3-4).
- c. SECURING EQUIPMENT, STAGING ELEMENTS, ETC: Tying or securing equipment or scaffolding directly to any hard surface, metal fixture, or vegetation is strictly prohibited.
- d. TEMPORARY STAGES ON TURF: The park has many locations where stages can be set up on hardscape. However, stages with proper turf protection can be set up in certain turf areas if approved by the NPS in the permit conditions. The stage must be arranged so that as much turf can be protected as possible, this is accomplished by utilizing hardscape areas. Plywood, because of its ability to be modified to the proper size, is allowable for this purpose. Event planners should plan on some turf replacement with thick cut sod where the plywood is used.

- Every effort should be made to locate the stage on hardscape so that the turf can be clear spanned.
- All structures must minimize all points that come in contact with the turf grass, structures on the turf should be on a riser with as few points as possible touching the turf,



- these points should have Enkamat and plywood pads underneath as outlined:
- Each screw jack should have a 16"x16" wooden pad (3/4" plywood) and two layers of Enkamat 18"x18".
 - Three day maximum.
 - Scheduling of set up should include efforts to hold off stage skirting installation until last possible moment and removed immediately after the event. This will allow for maximum light penetration and airflow.
 - Ballasts should be situated on hardscape. If this is not possible, protect turf with four layers of Enkamat and two layers of plywood (3/4"). Cost recovery estimates should include sodding these areas with thick cut sod.
 - All cables (power, audio, etc) shall be encased in a Yellow Jacket wire troth (or approved equal).
 - Where a wire path crosses a known road or walkway, ADA compliant Yellow jacket or approved equal must be used.
 - The troth must be moved on a daily basis to avoid damaging the turf.
 - In a stage situation, cables should be flown over the steel, tied to stage or structure under the stage, and the mix position and not allowed to touch any grass area.
 - Tear-down of the stage and structures should begin immediately following the load out of show productions. Unless conditions due to weather would cause tear down operations to damage the turf.
 - The turf manager will inspect the area for damage after the event in order to determine the extent of turf that will need to be replaced by sod.
- e. POWER SUPPLY: The permit applicant is responsible for providing their own temporary source of electrical power (generators), which should be quiet in nature and design.
- Electrical cables shall be laid on the ground and not suspended. They must be covered, well-marked, and not pose a tripping hazard or an obstruction to the disabled.
 - Where a wire path crosses a known road or walkway, ADA compliant Yellow jacket or approved equal must be used.
 - Protection from fuel leaks (secondary containment) must also be provided.
 - Grounding rods are subject to staking restrictions and cannot be installed in some areas and cannot be installed without a NPS official present. Self grounding generators are preferred.
 - Shall be place on approved pedestrian flooring (described above) rated for generator weight if placed on turf.
- f. DELIVERY OF MATERIALS: When delivering materials, all load limits for individual features of the memorial, as outlined by these guidelines, shall be strictly enforced. If necessary, materials shall be hand carried to the desired location.
- g. SUBMITTAL REQUIREMENTS: The permit applicant shall submit drawings of each staging element and identify where each unit is to be used on site. The structural load

limits of each location, as outlined by these guidelines, shall not be exceeded. Permit applicant must submit drawings stamped by a registered, professional engineer (from one of the following jurisdictions: State of Maryland, Commonwealth of Virginia, or District of Columbia) for any structure that is 50 feet or more in any dimension. Also, see Section VI.1.d. TEMPORARY PROTECTION, HARD SURFACES, ALLOWABLE LIVE LOAD, page 4. Wind loads also shall be calculated and the accompanying documentation stamped by a professional engineer as stated in Section VI. 1. d. and e. above.

VIII. LIGHTING

a. EXISTING LIGHTING: All existing interior and exterior lighting shall remain undisturbed. All existing lighting subject to potential damage by temporary structures or temporary lighting, shall be protected.

b. TEMPORARY LIGHTING: All temporary lighting fixtures and lighting structures shall be of non-staining, non-rusting, materials. Tying or securing temporary lighting directly to any hard surfaces (see Section VI.1. TEMPORARY PROTECTION, HARD SURFACES, page 3), metal fixtures, or vegetation, is strictly prohibited. Heat generated from temporary lighting shall not pose a risk to any works of art, the physical fabric of the memorial, hard surfaces, or vegetation. Temporary lighting cannot be positioned to directly shine onto the Memorial, statue, or murals in the chamber. The light levels generated near or inside the chamber must not alter the exterior visual appearance of the memorial from normal operating conditions.

c. HEIGHT LIMIT: The height limit for lighting structures is no higher than the top of the cornice (see Drawing 2, page 15, for location of cornice and dimensions). Wind loads for vertical structures shall be calculated.

d. POWER SUPPLY: See Section VII.c. POWER SUPPLY, page 12, for power supply requirements.

e. SUBMITTAL REQUIREMENTS: The permit applicant is required to submit a plan illustrating how and where lighting is to be used. This includes the use of any temporary lighting structures.

IX. UTILITIES

The permit holder is responsible for avoiding any utility lines in the work area (see Drawing 10-19, pages 23-32, for utility locations). If existing utilities are damaged in any way, the permit holder shall be held liable.

a. ENVIRONMENTAL SAFETY: As per environmental laws in the District of Columbia, no hazardous material shall be disposed of in the storm sewer system.

b. SANITARY SEWERS: No materials shall be disposed of in sanitary sewers including the emptying of temporary toilets.

X. VIBRATION RESTRICTIONS

Vibration produced by construction equipment and/or amplification (sound systems), within a certain distance from the memorial, poses a danger to the structure. The memorial can be damaged by large vibration amplitudes (how far a structure moves, measured in inches or meters), that can move the foundation and can cause cracking. To avoid damaging vibration, all construction equipment or sound systems must meet the following criteria:

a. RESTRICTIONS:

- Equipment and sound system vibration levels shall not exceed a designated frequency. Frequency is how many times a building moves back and forth each second, in cycles per second. Frequency is measured in Hertz (Hz), where one cycle per second equals one Hertz. Equipment and level of sound systems shall not exceed thirty (30) Hertz (Hz.) per second, as measured at the base of the memorial.

b. SUBMITTALS REQUIREMENTS: The permit applicant shall submit to NPS, written proof that all construction equipment and sound levels fall within the above parameters. In addition to the documentation on frequency (in Hertz), the submittal shall include the weight of the equipment, and if applicable, the type of engine (gasoline, diesel, or electric), and the rotations per minute (RPM) of the engine. In the event there is a question about a certain piece of equipment and the vibration it produces, the permit holder will be required to perform testing at their own expense until the NPS is satisfied that the requirements of this document are being met.

XI. LINCOLN CIRCLE

Lincoln Circle is the main asphalt road, plaza and associated concrete sidewalks and granite curbs that encircle the north, south, east and west sides of the perimeter of the memorial (see Drawing 3, page 16, for location of Lincoln Circle). A pedestrian plaza constructed of concrete pavers completes the circle on the east side in front of the memorial. The east plaza is bordered by a linear arrangement of metal security bollards set in granite and concrete vehicular barriers. Nothing may be attached, secured, or tied to the bollards or to the barriers, including signs, fixtures, fencing, etc. The operation of the retractable bollards located on the north and south sides of the east plaza are under the purview of the United States Park Police (USPP) and must remain operational and unobstructed from view all times.

The east plaza is a pedestrian area. Vehicular traffic on the east plaza is limited to emergency, security and maintenance vehicles. Permit holders may not use the plaza area to construct, secure, or erect temporary structures, facilities, or equipment. In addition, the east plaza may not be used for deliveries or for the temporary staging of materials. Exceptions to this restriction may be made if consistent with the NPS regulations at 36 C.F.R. §§ 7.96(g)(4)(iii), (5)(iv) as determined by the NPS. Deliveries should be designated to the areas outlined in the site access/traffic control plan submittal (see Section II.b. SITE ACCESS, SUBMITTAL

REQUIREMENTS, page 2). Any request to carry large materials through the plaza area requires prior, written approval from the NPS.

a. TEMPORARY PROTECTION: See Section IV. TEMPORARY PROTECTION, page 3. Protection is required on, or within, Lincoln Circle for all staging elements, or heavy equipment (under cranes and out riggers [projecting bracing which stabilizes cranes], etc.) Should any damage occur, the permit holder shall be held liable.

b. RESTRICTIONS: Lincoln Circle weights are limited to 20,000lb single-axle, 34,000lb tandem axle and 80,000lb gross vehicle weight. See the *District of Columbia Municipal Regulations Title 18 Vehicle and Traffic* for additional information. At no time shall loads exceed 150psi on the concrete pavers on the plaza portion of the circle. All outriggers will be shored with a minimum of 4 square feet of dunnage per outrigger to uniformly distribute the combined equipment and material loads.

c. DELIVERIES: See Sections II. SITE ACCESS, page 2 and III. HOURS OF OPERATION, page 2.

XII. THE MEMORIAL (STRUCTURE)

No direct contact with, supporting on, or tying to, any portion of the memorial structure is allowed.

1. APPROACHWAY

The approachway is the gradually stepped, cobblestone and granite plaza in front of the main entrance to the memorial (east elevation), facing the Reflecting Pool. The approachway consists of an upper section, above the east plaza, which leads to the memorial proper, and a lower section extending from the plaza toward the Reflecting Pool. The granite-paved accessible routes are part of the upper approachway (see Drawing 3-5, pages 16-18, for location of approachway). The large Alaska/Hawaii commemorative stone is also part of the upper approachway.

a. TEMPORARY PROTECTION: The permit holder shall follow these guidelines for protection of the approachway (see Section IV. TEMPORARY PROTECTION, page 3). Should any damage occur, the permit holder shall be held liable.

b. MOTORIZED VEHICLES: Motorized vehicles are prohibited from driving up the accessible pedestrian route or driving on the central cobblestone panels.

b. ALLOWABLE LIVE LOAD: The limit for live loading (movable weight including small equipment, light weight vehicles, temporary structures, and people) on the approachway is 100 pounds per square foot (psf). All live loads shall be uniformly distributed. Calculations using allowable stress design or load resistance factor criteria are acceptable, as long as the most stringent of all load combinations is utilized. Calculations, completed by a registered, professional engineer (from one of the following jurisdictions: State of Maryland, Commonwealth of Virginia, or District of Columbia), certifying that the proposed live load is

within the allowable limit shall be submitted for approval.

c. SUBMITTAL REQUIREMENTS: The permit applicant shall identify graphically and in writing how the approachway is to be used (sketches of staging elements, structures, etc.). This submittal shall demonstrate adherence to loads limitations. The NPS will review this submittal and determine if the proposed use of this area is acceptable. Also, see requirements for Allowable Live Load above.

2. RAISED TERRACE

The raised terrace is the grassy, elevated area that surrounds the base of the memorial building (see Drawing 3-5, pages 16-18, for location of raised terrace). This area is restricted for all permitted activities. The raised terrace wall is the granite wall that supports the terrace.

3. MARBLE STEPS

The marble steps, located just before entering the statuary chamber of the memorial, are restricted for all permitted activities (See Drawing 3-5, pages 16-18, for location). Please reference: Code of Federal Regulations, 36, Parks, Forests, and Public Property: 36 C.F.R. § 7.96 (g)(3) (ii)(C).

4. GRANITE STEPS AND GRANITE LANDINGS

An inscription commemorating Dr. Martin Luther King's 1963 "I Have Dream" speech has been carved into the center paver on the topmost granite landing. No temporary structure or facility supports may be set up or erected on the granite stone where the inscription is located, and the inscription must be protected from any temporary structure or facility, trash, dirt, or debris at all times. (See Drawings 3-4, pages 16-17, for location, this also includes granite steps and granite landings at the approachway)

a. TEMPORARY PROTECTION: The permit holder shall follow these guidelines for protection of the granite steps and granite landings (see Section VI. TEMPORARY PROTECTION, page 3). Should any damage occur, the permit holder shall be held liable.

b. ALLOWABLE LIVE LOAD: The limit for live loading on the granite steps and granite landing at the front of the memorial (movable weight including equipment, vehicles, temporary structures, and people) is 100 psf. All live loads shall be uniformly distributed. Calculations using allowable stress design or load resistance factor criteria are acceptable, as long as the most stringent of all load combinations is utilized. Calculations, completed by a registered professional engineer (from one of the following jurisdictions: State of Maryland, Commonwealth of Virginia, or District of Columbia), certifying that the proposed live load is within the allowable limit shall be submitted for approval.

c. SUBMITTAL REQUIREMENTS: The permit applicant shall identify graphically and in writing how the approachway is to be used (sketches of staging elements, structures, etc.). This submittal shall demonstrate adherence to load limitations. The NPS will review this submittal and determine if the proposed use of this area is acceptable. Also, see requirements for

Allowable Live Load above.

5. STATUARY CHAMBER

The statuary chamber, the interior of the memorial which houses the famous statue of Abraham Lincoln, is restricted for all permitted activities, except official Lincoln birthday commemorative events. Public access to the chamber shall remain open at all times (see Drawings 3-5, pages 16-18, for location of statuary chamber). There are times, however, when due to the magnitude of an event or for security reasons, the statuary chamber will be closed during the event. Please reference: Code of Federal Regulations, 36, Parks, Forests, and Public Property: 36 C.F.R. § 7.96 (g)(3)(ii)(C).

a. SUBMITTAL REQUIREMENTS: The permit applicant shall provide a plan, for NPS approval, of how the statuary chamber is to remain open to the public before, during, and after a special event or demonstration.

6. COLONNADE

The colonnade is the row of marble columns which surrounds the memorial and the space these columns create (including the marble floor). This area is restricted for all permitted activities (see Drawings 3-5, pages 16-18, for location of colonnade). Please reference: Code of Federal Regulations, 36, Parks, Forests, and Public Property: 36 C.F.R. § 7.96 (g)(3)(ii)(C).

7. ELEVATOR

Use of the elevator (located off the southeast basement entrance and exhibit space- see Drawing 4, page 17, for location of elevator), for construction purposes, is strictly prohibited to the permit holder. This elevator is for individuals unable to take the stairs, in order to gain access to the statuary chamber. A clear path to the southeast entrance and to the elevator via the accessible routes, must be maintained at all times (see Drawings 3-4, pages 16-17 for location of southeast entrance and accessible routes).

a. SUBMITTAL REQUIREMENTS: The permit holder shall provide a plan, for NPS approval, of how the elevator is to remain open to the public before, during, and after a special event or demonstration.

8. EXHIBIT SPACE

The exhibit space, located through the southeast basement entrance, is off limits to the permit holder during permitted events (but shall remain open to the public). There are times, however, when due to the magnitude of an event or for security reasons, the exhibit space will be closed during the event. This will be determined by the NPS ahead of time. A clear path to the southeast entrance and to the exhibit space via the accessible routes, must be maintained at all times (see Drawing 3, page 16, for location of exhibit space).

a. SUBMITTAL REQUIREMENTS: The permit holder shall provide a plan for NPS approval,

of how the exhibit space is to remain open to the public during a special event or demonstration.

9. REST ROOMS

The rest rooms, which are located off of the exhibit space through the southeast basement door, generally shall remain open to the public before, during, and after a special event or demonstration. However, there are times when due to the magnitude of an event or for security reasons, the rest rooms will be closed during the event. This will be determined by the NPS ahead of time (see Drawing 3, page 16, for location of rest rooms). The restrooms are off-limits to the permit holder.

10. ROOF

For security reasons, the roof of the Lincoln Memorial is restricted for permitted activities (see Drawing 5, page 18, for location of roof). Please reference: Code of Federal Regulations, 36, Parks, Forests, and Public Property: 36 C.F.R. § 7.96 (g)(3)(ii)(C).

XIV. SITE CLEAN-UP

The permit holder is responsible for all site clean-up before, during, and after a special event:

TRASH/DEBRIS PICK-UP: All trash and debris shall be cleared from the grounds and hard surfaces of the memorial immediately before, during and after the conclusion of the special event or demonstration. Arrangements shall be made before a permit is issued for this to occur (local trash collection companies offer this service). Receptacles for this effort shall be provided and removed from the site accordingly by the permit holder. Receptacles must be placed on hard, paved surfaces and must not overflow with trash or debris. Use of clear trash bags is required for all trash receptacles used for the event. All park roads shall be cleaned using a street sweeper. Washing debris and other material into storm sewer catch basins is not acceptable.

The NPS will inspect the site after a special event or demonstration (after all equipment has been removed) to assess the condition of the site. The permit holder is responsible for any additional site cleanup, as determined by and at no additional cost to the NPS.

b. SUBMITTAL REQUIREMENTS: The permit applicant shall demonstrate, before a permit is issued, that arrangements for trash pickup after a special event have been made. The amount of time anticipated for clean up also shall be provided.

XV. NATIONAL PARK SERVICE - POINTS OF CONTACT

a. NATIONAL MALL AND MEMORIAL PARKS:

SUPERINTENDENT: (202) 245-4661

PERMITS OFFICE: (202) 245-4715

900 Ohio Drive, S.W.

Washington, D.C. 20024-2000

XVI. DRAWINGS

XVII. GLOSSARY OF TERMS

(AS THEY RELATE TO THE LINCOLN MEMORIAL)

ALL-TERRAIN VEHICLES: All-terrain vehicles are small, multi-purpose vehicles with large, low pressure tires, which can travel across many different types of ground surfaces. Vehicles of this kind produce low levels of vibration.

ALLOWABLE LIVE LOAD: Allowable live load is the movable weight that the structure of a certain area can safely accommodate. This would include the weight of equipment, vehicles, temporary structures, people, etc. Placing weight greater than the allowable load limit can compromise the structural integrity of the memorial, putting both the structure and public in danger. A load produced by the use and occupancy of the building or other structure that includes construction or environmental loads, such as wind load, snow load, rain load, earthquake and flood load.

AMPLITUDE: When there is a significant source of external vibration, amplitude is how far a structure moves, measured in inches or meters.

APPROACHWAY: The series of gradually stepped, cobblestone and granite plazas in front of the main entrance to the memorial (east elevation), facing the Reflecting Pool. The upper approachway extends from the east plaza portion of the Lincoln Circle up toward the memorial proper. The lower approachway extends from the east plaza toward the Reflecting Pool. The granite-paved accessible route is also part of the upper approachway.

BOLLARDS: Bollards are vertical posts used to direct or control vehicular traffic.

COBBLESTONE: Cobblestones at the Lincoln Memorial are found at the approachway. They are rounded, multi-color pebbles, set into a mortar setting bed.

CORNICE: The molded and projecting horizontal member that crowns the memorial.

DIAMETER AT BREAST HEIGHT (DBH): This is a standard landscape term meaning the diameter of the trunk of a tree at the height of a person's chest.

EAST PLAZA: The east plaza is the section of the Lincoln Circle that has been designated for pedestrians only. It connects the two -upper and lower- sections of the formal approachway entry to the memorial. Structures and equipment are not permitted in this area.

EXHIBIT SPACE: The exhibit space is a small gallery located at the southeast side of the building. The elevator is located in the main exhibit space and rest rooms are adjacent. This area is restricted for permitted events.

FREQUENCY: When there is a significant source of external vibration, frequency is how many times a building moves back and forth each second, in cycles per second. It is measured in Hertz (Hz), where one cycle per second equals one Hz.

GRANITE LANDINGS: Granite landings are located at the upper approachway, and just before you enter the memorial, between the marble steps and the granite steps.

GRANITE STEPS: Granite steps are located at the approachway (as you move up) and are the second to last set of steps before you enter the memorial.

HARD SURFACES: Hard surfaces include those made out of stone (marble, granite, cobblestone [the rounded pebbles found at the approachway], asphalt (surface of roadway), and concrete and concrete pavers (both smooth and with exposed aggregate). This includes hard surfaces at the memorial proper and surrounding steps, plazas, walls, benches, coping (top of walls), ramps, sidewalks, and roadways.

HERTZ: A hertz is a unit of frequency of a periodic process equal to one cycle per second. We use this measurement to determine the amount of vibration a piece of equipment, vehicle, or sound system produces.

IRRIGATION SYSTEM: This is an underground system of piping through which water is disbursed. It is used for the watering of surrounding trees, shrubs, and grass. Above ground sprinkler heads distribute this water to the vegetation.

LINCOLN CIRCLE: Lincoln Circle is the main, asphalt road, concrete paver plaza and associated concrete sidewalks and granite curbs that encircle the perimeter of the memorial. The plaza portion is closed to public vehicular traffic.

MARBLE STEPS: The marble steps are the last set of steps encountered before entry into the memorial (at the main entrance). These steps are restricted for permitted events.

METAL STAGING ELEMENTS: Metal staging elements include any type of metal platform constructed for a special event. This includes stages, bleachers, podiums, sound towers, light towers, camera stands, structures for video screens, booths, concession stands, etc.

MITIGATION: To mitigate is to lessen or improve a situation or condition. If damage is caused to the memorial or landscape, the permit holder is required to mitigate the condition by repairing, removing, or replacing the affected area at no cost to the government. The NPS shall regulate this process.

NATIONAL MALL and MEMORIAL PARKS (NAMA): National Mall and Memorial Parks is a unit of the National Park Service, which manages 1048.5 acres of land in downtown Washington, D.C. This area includes the National Mall and many of the major national monuments (Lincoln Memorial, Jefferson Memorial, Washington Monument, Korean War Memorial, Vietnam Veteran's Memorial, World War II Memorial, etc.).

NATIONAL PARK SERVICE (NPS): The National Park Service is a federal bureau under the United States Department of Interior. It is responsible for 391 national parks, monuments, and historic sites in 49 states, the District of Columbia, American Samoa, Guam, Puerto Rico,

Saipan, and the American Virgin Islands.

PARK POLICE: United States Park Police (USPP) is the law enforcement branch of the National Park Service. Their area of responsibility includes the National Mall and the Lincoln Memorial.

POLYSTYRENE: Polystyrene is a polymer of styrene or a rigid, styrofoam-like material to be used at the memorial to protect hard surfaces (see the definition for Hard Surfaces).

RAISED TERRACE: The raised terrace is the grassy elevated area that surrounds the base of the memorial. The raised terrace wall is the granite wall that supports the terrace.

SECURITY BARRIERS: Security barriers at the Lincoln Memorial include bollards (stationary and retractable), low retaining walls, and decorative concrete blocks.

STATUARY CHAMBER: The statuary chamber is the main, interior portion of the memorial, which houses the famous sculpture of Abraham Lincoln.

SUBMITTAL REQUIREMENTS: These are the items which the permit applicant is required to submit to the National Park Service, for use of the memorial and the memorial grounds for a special event or demonstration. These items correspond to the guidelines in this document. If all of the submittal requirements are satisfactory to the NPS, a permit will be granted for use of the Lincoln Memorial.

TEMPORARY PROTECTION: Temporary protection is the material used to cover or safeguard the hard surfaces (see definition of Hard Surfaces) and landscape of the Lincoln Memorial.

TEMPORARY STRUCTURES: Temporary structures include any structure constructed at the memorial solely for the purpose of a special event or demonstration. This includes stages, bleachers, podiums, sound towers, light towers, camera stands, structures for video screens, booths, concession stands, etc., built of any material.

From: [Vela, Raymond \(David\)](#)
To: [Wallace, George R](#); [Everson, OS-Margaret](#)
Cc: [Tanner, John R](#); [Hambleton, Ryan M](#); [Benge, Shawn T](#)
Subject: Update
Date: Wednesday, April 29, 2020 6:45:40 PM

Hi Folks,

Jeff provided and update after my call with both the region and park this morning regarding the event this Sunday. Here is the latest:

- **Record of Decision:** Kim Fondren in SOL is drafting the ROD for DOI signature. The ROD will include a mention that resource protection guidelines must be followed.
- **Security Perimeter:** USPP met with USSS today. USSS will be requesting a closure that matches the perimeter of our July 4th closure to include Memorial Bridge. Korean War Veterans Memorial and Vietnam Veterans Memorial will be closed for much of Sunday. USSS is ordering bike rack for the perimeter and USPP will call in 100 officers in addition to MPD and USSS support. The large boundary is necessary because of the prominent location of the event. USSS will send their formal request to Lisa with (cc to Jeff) who will forward to Kim.
- **Event:** It will be a Town Hall format with POTUS and potentially two other participants sitting on stools at the base of the Lincoln Statue. They talked through the lighting requirements with FOX as well as floor protection methods, cable runs, etc. and they don't anticipate problems. They will finalize in a walk-through tomorrow morning.
- **Public Participation:** We will confirm tomorrow that there is no seated audience and that they still plan to have some public on site to walk up and ask questions.
- **POTUS Movements:** Jeff reviewed the proposed movements with USPP, and they concur.

I truly valued and appreciated the discussion that we had with Margaret yesterday regarding the sensitivity and importance of the Memorials and their chambers. The recent Apollo 50th event illuminating the Washington Monument was an example of the importance in setting a very high standard (in this case, a Congressional Resolution).

We had the following language - "In response to H.J. Res 60, the Secretary of the Interior has directed the National Park Service (NPS), from July 16 through July 20, 2019, to allow a once-in-a-lifetime commemorative event to project film footage and associated imagery of the Apollo 11 Mission onto the facade of the Washington Monument." We can discuss these interests further.

Have a great day.

David Vela
Deputy Director,
Exercising the Authority of the Director

National Park Service
Washington, DC
(202) 208-4621

From: [DOI, WatchOffice](#)
Subject: DOI Emergency Management Common Operating Picture 05032020
Date: Sunday, May 3, 2020 7:59:58 AM

Good Morning,

The Interior Operations Center has published the [DOI Common Operating Picture](#) for your review. As a reminder, due to the enhanced graphics and heavy emphasis on mapping, the report will need to be viewed on the DOI network via desktop/laptop. ***If prompted, select "AD" when clicking the link above.***

Below is an Executive Summary of today's report:

CORONAVIRUS

Current Situation:

- Globally (As of May 3, 2020 – WHO):
 - Confirmed Cases: [3,318,755 \(+85,564\)](#)
 - Deaths: [236,431 \(+8,942\)](#)
- United States (As of May 3, 2020 – JHU):
 - Confirmed Cases: [1,133,069 \(+28,908\)](#)
 - Deaths: [66,385 \(+1,317\)](#)
- Department of the Interior (As of May 2, 2020 – Bureau/Office Reporting)
 - Confirmed Cases: 77 (+0)
 - Deaths: 4 (+0)
 - Recovered: [20 \(+2\)](#)

The latest situation summary updates are available on the [CDC](#) and [WHO](#) websites.

A [COVID-2019 Action Tracker](#) has been established to display established state and local mitigation strategies. This website is a compilation by state of known confirmed cases, travel restrictions, state government and school operating status, National Guard activations, social gathering restrictions, restaurant/bar closures, and other response actions. Data compilation courtesy of AEI.

DOI Bureaus and Offices Impacts/Reports:

- **FWS** – Four (+0) FWS employees have tested positive for COVID-19, and [54 \(-12\)](#) FWS employees are under self-quarantine. [Two \(+2\) FWS employees have recovered from the virus.](#) [On May 1, a previously reported presumptive positive FWS employee received a negative test result for COVID-19.](#)
- **NPS / USPP** – NPS is reporting that 29 (+0) employees have tested positive for COVID-19. [The management of the NPS COVID-19 Pandemic response is being transferred from an Incident Management Team \(IMT\) to a longer term solution, and the current IMT is scheduled to demobilize on May 8. The Adaptive Recovery Coordinator has met with staff at the Main Interior Building to discuss demobilization and the future organization. The IMT submitted an updated Respiratory Protection Plan and Frequently Asked Questions \(FAQs\) that now provide a link to DOI Talent for Occupational Safety and Health Administration \(OSHA\) training videos. An Interior Business Center \(IBC\) Order/Status Summary for the Distribution Centers was sent out to Regional Logistics Section Chiefs and Distribution Center Leads. A PPE Flow Chart for the Inventory, Supply, and Ordering System was created and disseminated, and guidance was provided to the Distribution](#)

Center Leads on the types of items that will be available to order. The IMT provided support to the Interior Regions 6, 7, and 8 Safety Officer, and answered a USGS request regarding educational safety material. A solicitor review was facilitated to provide for a restricted opening at the Lake Mead National Recreation Area, and another package was reviewed and provided for the use of park facilities by a municipality. An update of the known park openings was provided for leadership, and the IMT reviewed packages for parks providing modifications to operations for increased access.

Other Local, State, Federal Government:

- **National/State/Local overview** – There are 27,763 confirmed positive COVID-19 individuals in the NCR as of May 3. In CA, the Department of Food and Agriculture (CDFA) surveyed the agricultural personal protective equipment (PPE) needs of 46 counties, and 76% of the counties reported that they have had difficulty fulfilling their PPE needs. The National Guard is assisting the NJ Office of Emergency Management in reopening a wing of the East Orange General Hospital by constructing hospital beds for COVID-19 relief. In NY, the state is beginning to move medical equipment from “downstate” locations to “upstate” locations due to a shift in positive cases, and the New York City Mayor is going to open some streets in the five boroughs to pedestrians and cyclists on May 4 to promote social distancing. In NJ, Hillsborough County homeless camps were provided sinks, toilets, fencing, and other supplies and services due to COVID-19.
- **FEMA** – The FEMA Administrator has been delegated the authority to approve requests for the Crisis Counseling Assistance and Training program, or Crisis Counseling program during the COVID-19 pandemic. Additionally, FEMA has approved VA to receive three Battelle Critical Care Decontamination Systems (CCDS) that can collectively sterilize up to 240,000 units of PPE per day for reuse. The three systems will be operational in the Town of Blacksburg, the City of Newport News, and Chesterfield County within the next week.
- **HHS** – HHS is reporting that a pharmaceutical company announced its ability to provide several million rounds of Remdesivir next year for use against COVID-19.
- **CDC** – The CDC updated the [Interim Guidance](#) “Criteria for Return to Work for Healthcare Personnel with Confirmed or Suspected COVID-19”. The Guidance includes return to work practices and work restrictions. The CDC has also launched a [national viral genomics consortium](#) to better map SARS-CoV-2 (virus that causes COVID-19) transmission, which will greatly expand the use of whole genome sequencing of the COVID-19 virus. This national network of sequencing laboratories will speed the release of SARS-CoV-2 sequence data into the public domain to help public health response teams to better understand how the virus is spreading, both nationally and in their communities. This will also assist public health officials with interrupting chains of transmission, preventing new cases, and protecting and saving lives.
- **DHS** – The USGC is currently monitoring 25 commercial vessels with crew or passengers embarking from a coronavirus port of interest and scheduled to arrive in U.S. ports in next 24 hours.
- **DOD** – All patients are being transferred or discharged from the Javits Center in New York City (NYC), and DOD personnel and equipment will be withdrawn by May 5. DOD is also reporting that 729 personnel supporting ten NYC hospitals are working on a phased exit from the facilities by May 6. Additionally, a plan is being developed for small teams of USNS Mercy personnel to support shoreside operations in CA.

- **VA** – On May 1, the VA announced, in cooperation with the Mayo Clinic, to undergo a series of clinical trials and investigations to determine whether blood transfusions from people who recovered from COVID-19 can help those who are still experiencing symptoms.

Significant Open Source Media:

- **FOX 13** – Zion National Park announces plans to reopen starting May 13
- **Los Angeles Times** – Drugs for heartburn, gout and depression now being tested as coronavirus treatments
- **FOX Business** – Online coronavirus scams to avoid and the red flags that give them away
- **The Hill** – HHS making 1K coronavirus tests available as senators return to DC
- **WTVR** – COVID-19 in Virginia: 4 new outbreaks reported Saturday

Other Incidents

- The USGS reported that a magnitude 5.4 earthquake occurred on May 2 at 7:13 a.m. EDT, approximately 3.5 miles to the south of Tallaboa, Puerto Rico at a depth of 5.5 miles. The USGS issued an Orange Prompt Assessment of Global Earthquakes for Response (PAGER) alert, indicating that significant damage is likely and the disaster is potentially widespread. A Green PAGER alert was issued for shaking-related fatalities, indicating a low likelihood for casualties. The USGS reported that the earthquake occurred in the same region as the January earthquake sequence and is an aftershock from the January 7 magnitude 6.4 event. The May 2 earthquake falls within expectations for the sequence laid out in the USGS [aftershock forecast](#), which was updated a few days ago to indicate a 20% chance of an earthquake, magnitude 5 or higher, during the period of April 28 to May 28. The USGS [ShakeMap](#) indicates very strong shaking locally, and reports indicate that damage was caused locally to older structures, as well as widespread power outages. FEMA is reporting no casualties, and power has been either restored or re-routed as of this morning. The U.S. Fish and Wildlife Service has accounted for personnel located in the area of the earthquake and reports no known personal property or facility impacts. This will be a final update for this incident, unless information is received indicating impacts to DOI personnel or facilities.
- The National Park Service and the U.S. Park Police, in cooperation with local, state, and federal partners, will implement [road and area closures](#) around the western end of the National Mall in Washington D.C. today as security measures while President Trump is at the Lincoln Memorial. The Lincoln Memorial and surrounding grounds will be closed from 6:00 a.m. until midnight, and there will be no public access nor opportunity to see the President while he is at the memorial.

There have been no additional reports of impacts to DOI personnel or facilities beyond those included in the DOI Common Operating Picture.

If you have any questions or require additional assistance, please contact the Interior Operations Center.

Distribution:

Assistant Secretaries
Bureau Heads
Deputy Assistant Secretaries
EM Coordinators and Alternates

EM-ICAT
EM-Incident Support Team
EM-Regional Emergency Management Contacts
IOS Senior Officials

V/r,

Spencer Fenton
Jaimie Gillespie

Interior Operations Center
Office of Emergency Management
U.S. Department of the Interior
Main Phone: 202-208-4108
Toll Free: 877-246-1373
Secure: 202-208-7064
Fax: 202-208-3421
Email: DOI_Watch_Office@ios.doi.gov

From: [Benemelis, Isabel M](#)
To: [Eisenman, Theresa M](#)
Subject: FW: [EXTERNAL] Who can use the Lincoln Memorial?
Date: Monday, May 4, 2020 3:42:53 PM

Looks good.

From: Litterst, Michael D <Mike_Litterst@nps.gov>
Sent: Monday, May 4, 2020 3:40 PM
To: Interior Press <interior_press@ios.doi.gov>
Subject: Fw: [EXTERNAL] Who can use the Lincoln Memorial?

Follow up from *Washingtonian* magazine regarding use of the Lincoln Memorial. Propose the following response. Or since it deals with a Secretarial action, should I refer her to InteriorPress?

"Permits are not being issued for any events until May 16. Anyone seeking to use the memorial before then would need a similar Record of Determination from the Secretary."

Mike

~~~~~

Mike Litterst  
Chief of Communications  
National Mall and Memorial Parks

Cell: (202) 306-4166

---

**From:** Jane Recker <[jrecker@washingtonian.com](mailto:jrecker@washingtonian.com)>  
**Sent:** Monday, May 4, 2020 3:09 PM  
**To:** Litterst, Michael D <[Mike\\_Litterst@nps.gov](mailto:Mike_Litterst@nps.gov)>  
**Subject:** Re: Fw: [EXTERNAL] Who can use the Lincoln Memorial?

Okay, I see though that NPS isn't accepting applications for permits for assembly on the Mall through May 15 though. So, for all intents and purposes, does that mean only the President has the authority to use the Memorial for the next two weeks? Since NPS isn't accepting applications at the moment, is there anyone else who would even be able to seek use of the Memorial?

Jane Recker

On Mon, May 4, 2020 at 3:00 PM Litterst, Michael D <[Mike\\_Litterst@nps.gov](mailto:Mike_Litterst@nps.gov)> wrote:

Still on background - anyone can use the steps of the memorial by getting a permit, but a similar ROD would be needed from the Secretary to use the interior.



Mike

~~~~~  
Mike Litterst
Chief of Communications
National Mall and Memorial Parks

Cell: (202) 306-4166

From: Jane Recker <jrecker@washingtonian.com>
Sent: Monday, May 4, 2020 2:55 PM
To: Litterst, Michael D <Mike_Litterst@nps.gov>
Subject: Re: Fw: [EXTERNAL] Who can use the Lincoln Memorial?

Hi Mike, thanks for the quick response!

Just want to clarify: does this mean that other individuals would have the capacity to hold a town hall there, but they would need to arrange it through the Secretary of the Interior?

Let me know, thanks!

Jane Recker

On Mon, May 4, 2020 at 2:51 PM Litterst, Michael D <Mike_Litterst@nps.gov> wrote:

Hi, Jane:

The following statement is attributable to me:

"The Lincoln Memorial holds a special place in the hearts of all Americans as one of our nation's revered and iconic national monuments. Since its dedication nearly 100 years ago, the Lincoln Memorial has been used as a backdrop for countless events, demonstrations and speeches by the American people, including numerous presidents."

Background

Per usual policy, a Record of Determination was issued with respect to the closure and securing the area. As described in the [Record of Determination for the temporary closure of portions of the Lincoln Memorial](#): "due to the extraordinary crisis that the American people have endured and the need for the President to exercise a core governmental function to address the Nation about an ongoing public-health crisis," Secretary of the Interior David Bernhardt exercised his authority to facilitate the opportunity for the

President to conduct the interview within the Lincoln Memorial.

Hope this helps,

Mike

~~~~~

Mike Litterst  
Chief of Communications  
National Mall and Memorial Parks

Cell: (202) 306-4166

---

**From:** Jane Recker <[jrecker@washingtonian.com](mailto:jrecker@washingtonian.com)>  
**Sent:** Monday, May 4, 2020 12:04 PM  
**To:** News Media, NPS <[newsmedia@nps.gov](mailto:newsmedia@nps.gov)>  
**Subject:** [EXTERNAL] Who can use the Lincoln Memorial?

Hello, my name is Jane Recker, I'm a reporter with Washingtonian Magazine.

President Trump held a town hall at the Lincoln Memorial this Sunday. I was just wondering, who is allowed to do this? Would major news outlets, Mayor Bowser, or other important figures be able to hold a town hall from the steps of the Lincoln? Or is this a unique Presidential privilege.

Let me know, thanks so much!

Jane Recker

--

**JANE RECKER**  
Assistant Editor  
**Washingtonian Media**  
W. 202.739.2452  
[jrecker@washingtonian.com](mailto:jrecker@washingtonian.com)  
1828 L Street, NW, Suite 200, Washington, DC 20036  
[Washingtonian](#) | [Washingtonian Welcome Guide](#)  
[Washingtonian Weddings](#) | [Washingtonian Events](#) | [Washingtonian Custom Media](#)  
We are a WBENC Certified WBE/WOSB.

--

**JANE RECKER**  
Assistant Editor  
**Washingtonian Media**  
W. 202.739.2452

[jrecker@washingtonian.com](mailto:jrecker@washingtonian.com)

1828 L Street, NW, Suite 200, Washington, DC 20036

[Washingtonian](#) | [Washingtonian Welcome Guide](#)

[Washingtonian Weddings](#) | [Washingtonian Events](#) | [Washingtonian Custom Media](#)

We are a WBENC Certified WBE/WOSB.

--

**JANE RECKER**

Assistant Editor

**Washingtonian Media**

W. 202.739.2452

[jrecker@washingtonian.com](mailto:jrecker@washingtonian.com)

1828 L Street, NW, Suite 200, Washington, DC 20036



[Washingtonian](#) | [Washingtonian Welcome Guide](#)

[Washingtonian Weddings](#) | [Washingtonian Events](#) | [Washingtonian Custom Media](#)

We are a WBENC Certified WBE/WOSB.

**From:** [Eisenman, Theresa M](#)  
**To:** [Benemelis, Isabel M](#)  
**Subject:** RE: [EXTERNAL] Who can use the Lincoln Memorial?  
**Date:** Monday, May 4, 2020 3:35:22 PM

---

Thank you

---

**From:** Benemelis, Isabel M <[isabel\\_benemelis@ios.doi.gov](mailto:isabel_benemelis@ios.doi.gov)>  
**Sent:** Monday, May 4, 2020 3:32 PM  
**To:** Eisenman, Theresa M <[theresa\\_eisenman@ios.doi.gov](mailto:theresa_eisenman@ios.doi.gov)>  
**Subject:** FW: [EXTERNAL] Who can use the Lincoln Memorial?

Theresa – Mike Litterst from NPS worked directly with Nick on media requests for the Lincoln Memorial event. Was not aware. The inquiry below is the first one I've seen. Just wanted to be sure you were aware.

---

**From:** Litterst, Michael D <[Mike\\_Litterst@nps.gov](mailto:Mike_Litterst@nps.gov)>  
**Sent:** Monday, May 4, 2020 3:22 PM  
**To:** Benemelis, Isabel M <[isabel\\_benemelis@ios.doi.gov](mailto:isabel_benemelis@ios.doi.gov)>  
**Subject:** Re: [EXTERNAL] Who can use the Lincoln Memorial?

Sorry, Isabel. Nick and I have been communicating on this issue for the past week, so I just went directly to him when these inquiries came in. So the statements were reviewed and approved, but I should have remembered to go through the proper chain. Sorry about that!

Hope you're staying well!

Mike

~~~~~

Mike Litterst
Chief of Communications
National Mall and Memorial Parks

Cell: (202) 306-4166

From: Benemelis, Isabel M <isabel_benemelis@ios.doi.gov>
Sent: Monday, May 4, 2020 3:17 PM
To: Litterst, Michael D <Mike_Litterst@nps.gov>
Subject: FW: [EXTERNAL] Who can use the Lincoln Memorial?

Hi Mike!
Hope this finds you healthy and well.
Just a reminder to send these inquiries and the proposed response through Interior Press for

review.
Be well,
Isabel

From: Litterst, Michael D <Mike_Litterst@nps.gov>
Sent: Monday, May 4, 2020 2:51 PM
To: Jane Recker <jrecker@washingtonian.com>
Subject: Fw: [EXTERNAL] Who can use the Lincoln Memorial?

Hi, Jane:

The following statement is attributable to me:

"The Lincoln Memorial holds a special place in the hearts of all Americans as one of our nation's revered and iconic national monuments. Since its dedication nearly 100 years ago, the Lincoln Memorial has been used as a backdrop for countless events, demonstrations and speeches by the American people, including numerous presidents."

Background

Per usual policy, a Record of Determination was issued with respect to the closure and securing the area. As described in the [Record of Determination for the temporary closure of portions of the Lincoln Memorial](#): "due to the extraordinary crisis that the American people have endured and the need for the President to exercise a core governmental function to address the Nation about an ongoing public-health crisis," Secretary of the Interior David Bernhardt exercised his authority to facilitate the opportunity for the President to conduct the interview within the Lincoln Memorial.

Hope this helps,

Mike

~~~~~

Mike Litterst  
Chief of Communications  
National Mall and Memorial Parks

Cell: (202) 306-4166

---

**From:** Jane Recker <[jrecker@washingtonian.com](mailto:jrecker@washingtonian.com)>  
**Sent:** Monday, May 4, 2020 12:04 PM  
**To:** News Media, NPS <[newsmedia@nps.gov](mailto:newsmedia@nps.gov)>  
**Subject:** [EXTERNAL] Who can use the Lincoln Memorial?

Hello, my name is Jane Recker, I'm a reporter with Washingtonian Magazine.

President Trump held a town hall at the Lincoln Memorial this Sunday. I was just wondering, who is allowed to do this? Would major news outlets, Mayor Bowser, or other important figures be able to hold a town hall from the steps of the Lincoln? Or is this a unique Presidential privilege.

Let me know, thanks so much!

Jane Recker

--

**JANE RECKER**

Assistant Editor

**Washingtonian Media**

W. 202.739.2452

[jrecker@washingtonian.com](mailto:jrecker@washingtonian.com)

1828 L Street, NW, Suite 200, Washington, DC 20036



[Washingtonian](#) | [Washingtonian Welcome Guide](#)

[Washingtonian Weddings](#) | [Washingtonian Events](#) | [Washingtonian Custom Media](#)

We are a WBENC Certified WBE/WOSB.

**From:** [Benemelis, Isabel M](#)  
**To:** [Litterst, Michael D](#)  
**Subject:** RE: [EXTERNAL] Who can use the Lincoln Memorial?  
**Date:** Monday, May 4, 2020 3:23:02 PM

---

No worries. Thanks so much.

---

**From:** Litterst, Michael D <Mike\_Litterst@nps.gov>  
**Sent:** Monday, May 4, 2020 3:22 PM  
**To:** Benemelis, Isabel M <isabel\_benemelis@ios.doi.gov>  
**Subject:** Re: [EXTERNAL] Who can use the Lincoln Memorial?

Sorry, Isabel. Nick and I have been communicating on this issue for the past week, so I just went directly to him when these inquiries came in. So the statements were reviewed and approved, but I should have remembered to go through the proper chain. Sorry about that!

Hope you're staying well!

Mike

~~~~~

Mike Litterst
Chief of Communications
National Mall and Memorial Parks

Cell: (202) 306-4166

From: Benemelis, Isabel M <isabel_benemelis@ios.doi.gov>
Sent: Monday, May 4, 2020 3:17 PM
To: Litterst, Michael D <Mike_Litterst@nps.gov>
Subject: FW: [EXTERNAL] Who can use the Lincoln Memorial?

Hi Mike!
Hope this finds you healthy and well.
Just a reminder to send these inquiries and the proposed response through Interior Press for review.
Be well,
Isabel

From: Litterst, Michael D <Mike_Litterst@nps.gov>
Sent: Monday, May 4, 2020 2:51 PM
To: Jane Recker <jrecker@washingtonian.com>
Subject: Fw: [EXTERNAL] Who can use the Lincoln Memorial?

Hi, Jane:

The following statement is attributable to me:

"The Lincoln Memorial holds a special place in the hearts of all Americans as one of our nation's revered and iconic national monuments. Since its dedication nearly 100 years ago, the Lincoln Memorial has been used as a backdrop for countless events, demonstrations and speeches by the American people, including numerous presidents."

Background

Per usual policy, a Record of Determination was issued with respect to the closure and securing the area. As described in the [Record of Determination for the temporary closure of portions of the Lincoln Memorial](#): "due to the extraordinary crisis that the American people have endured and the need for the President to exercise a core governmental function to address the Nation about an ongoing public-health crisis," Secretary of the Interior David Bernhardt exercised his authority to facilitate the opportunity for the President to conduct the interview within the Lincoln Memorial.

Hope this helps,

Mike

~~~~~

Mike Litterst  
Chief of Communications  
National Mall and Memorial Parks

Cell: (202) 306-4166

---

**From:** Jane Recker <[jrecker@washingtonian.com](mailto:jrecker@washingtonian.com)>  
**Sent:** Monday, May 4, 2020 12:04 PM  
**To:** News Media, NPS <[newsmedia@nps.gov](mailto:newsmedia@nps.gov)>  
**Subject:** [EXTERNAL] Who can use the Lincoln Memorial?

Hello, my name is Jane Recker, I'm a reporter with Washingtonian Magazine.

President Trump held a town hall at the Lincoln Memorial this Sunday. I was just wondering, who is allowed to do this? Would major news outlets, Mayor Bowser, or other important figures be able to hold a town hall from the steps of the Lincoln? Or is this a unique Presidential privilege.

Let me know, thanks so much!

Jane Recker



--

**JANE RECKER**

Assistant Editor

**Washingtonian Media**

W. 202.739.2452

[jrecker@washingtonian.com](mailto:jrecker@washingtonian.com)

1828 L Street, NW, Suite 200, Washington, DC 20036



[Washingtonian](#) | [Washingtonian Welcome Guide](#)

[Washingtonian Weddings](#) | [Washingtonian Events](#) | [Washingtonian Custom Media](#)

We are a WBENC Certified WBE/WOSB.

**From:** [Deere, Judd P. EOP/WHO](#)  
**To:** [Goodwin, Nicholas R](#)  
**Subject:** [EXTERNAL] Re: Lincoln Memorial Inquiries  
**Date:** Wednesday, April 29, 2020 3:55:45 PM  
**Attachments:** [image001.png](#)  
[image002.png](#)  
[image003.png](#)  
[image004.png](#)

---

Push to me

Sent from my iPhone

On Apr 29, 2020, at 3:53 PM, Goodwin, Nicholas R  
<[nicholas\\_goodwin@ios.doi.gov](mailto:nicholas_goodwin@ios.doi.gov)> wrote:

Hey Judd,  
Do you have a general WH Press Inquiry email address to push reporters to for the Lincoln Memorial? Or do you want us to push them to you directly?

Thanks,  
Nicholas Goodwin  
Communications Director  
Office of the Secretary  
Department of the Interior  
(202) 412-2249

[<image001.png>](#)  
[<image002.png>](#)  
[<image003.png>](#)  
[<image004.png>](#)

**From:** [Goodwin, Nicholas R](#)  
**To:** [Litterst, Michael D](#); [Picavet, Alexandra M](#); [Roulett, Stephanie A](#)  
**Subject:** RE: [EXTERNAL] Questions in town hall  
**Date:** Thursday, April 30, 2020 9:30:02 AM  
**Attachments:** [image001.png](#)  
[image002.png](#)  
[image003.png](#)  
[image004.png](#)

---

I'll work to get you more information. In the meantime, I'm fine with you saying this: "The event is fully compliant with all legal requirements."

Nicholas Goodwin  
Office of the Secretary  
Department of the Interior  
(202) 412-2249



---

**From:** Litterst, Michael D <Mike\_Litterst@nps.gov>  
**Sent:** Wednesday, April 29, 2020 4:48 PM  
**To:** Goodwin, Nicholas R <nicholas\_goodwin@ios.doi.gov>; Picavet, Alexandra M <Alexandra\_Picavet@nps.gov>; Roulett, Stephanie A <Stephanie\_Roulett@nps.gov>  
**Subject:** Fwd: [EXTERNAL] Questions in town hall

I realize the solicitors are driving this bus, but if the WH isn't going to provide any information, we are going to need to be prepared to talk about the instrument under which this event is taking place, especially since it's being done without a permit.

---

Mike Litterst  
Chief of Communications  
National Mall and Memorial Parks  
Ph: 202-306-4166

---

**From:** Rob Hotakainen <[rhotakainen@eenews.net](mailto:rhotakainen@eenews.net)>  
**Sent:** Wednesday, April 29, 2020 4:24:55 PM  
**To:** Litterst, Michael D <[Mike\\_Litterst@nps.gov](mailto:Mike_Litterst@nps.gov)>  
**Subject:** Fwd: [EXTERNAL] Questions  
Back to you. Let me know if you'll release a copy of the permit as you always have in the past.  
Thanks, rob

**Rob Hotakainen**  
National parks, oceans and fisheries reporter  
**E&E NEWS**  
[rhotakainen@eenews.net](mailto:rhotakainen@eenews.net)  
[202-446-0477](tel:202-446-0477)  
Twitter: @HotakainenRob  
[122 C Street NW, 7th floor, Washington, DC, 20001](https://www.eenews.net)  
[www.eenews.net](https://www.eenews.net) | [@EENewsUpdates](#)  
Greenwire, E&E Daily, E&E News PM, Climatewire, Energywire

Begin forwarded message:

**From:** "Deere, Judd P. EOP/WHO" <(b) (6)>  
**Date:** April 29, 2020 at 4:21:21 PM EDT  
**To:** Rob Hotakainen <[rhotakainen@eenews.net](mailto:rhotakainen@eenews.net)>  
**Cc:** Michael D Litterst <[mike\\_litterst@nps.gov](mailto:mike_litterst@nps.gov)>  
**Subject:** Re: [EXTERNAL] Questions

Off record— I can't speak to permits. For cost and payment, I'd refer you to Fox News.

Sent from my iPhone

On Apr 29, 2020, at 4:15 PM, Rob Hotakainen  
<[rhotakainen@eenews.net](mailto:rhotakainen@eenews.net)> wrote:

Hi Judd, Mike Litterst steered me your way. Can you fill me in on permit, conditions, cost, who's paying? Thanks much

**Rob Hotakainen**

National parks, oceans and fisheries reporter

**E&E NEWS**

[rhotakainen@eenews.net](mailto:rhotakainen@eenews.net)

[202-446-0477](tel:202-446-0477)

Twitter: @HotakainenRob

[122 C Street NW, 7th floor, Washington, DC, 20001](https://www.eenews.net)

[>www.eenews.net<](https://www.eenews.net) | [@EENewsUpdates](https://www.eenews.net)

Greenwire, E&E Daily, E&E News PM, Climatewire, Energywire

Begin forwarded message:

**From:** "Litterst, Michael D" <[Mike\\_Litterst@nps.gov](mailto:Mike_Litterst@nps.gov)>  
**Date:** April 29, 2020 at 3:59:51 PM EDT  
**To:** Rob Hotakainen <[rhotakainen@eenews.net](mailto:rhotakainen@eenews.net)>  
**Subject:** Re: [EXTERNAL] Questions

Rob:

It's a White House event; you'll need to check with them for details. Judd Deere is point of contact -

(b) (6)

Mike

~~~~~

Mike Litterst

Chief of Communications

National Mall and Memorial Parks

Cell: (202) 306-4166

From: Rob Hotakainen <rhotakainen@eenews.net>

Sent: Wednesday, April 29, 2020 3:45 PM

To: Litterst, Michael D <Mike_Litterst@nps.gov>

Subject: [EXTERNAL] Questions

Hi Mike, can you fill me in on this? Permit required, conditions, who's paying, etc? Thanks and I hope all is well,
Rob

NEW YORK – April 29, 2020 — FOX News Channel (FNC) will host a two-hour virtual town hall with President Donald Trump on Sunday, May 3rd from 7-9 PM/ET. Co-moderated by chief political anchor and executive editor of *Special Report*, Bret Baier and anchor and executive editor of *The Story*, Martha MacCallum, the socially-distanced forum entitled ***America Together: Returning to Work***, will take place live from the Lincoln Memorial in Washington D.C., where President Trump will answer viewer-submitted questions from 7:15-8:45 PM/ET.

Rob Hotakainen

National parks, oceans and fisheries reporter

E&E NEWS

rhotakainen@eenews.net

[202-446-0477](tel:202-446-0477)

Twitter: @HotakainenRob

[122 C Street NW, 7th floor, Washington, DC, 20001](https://www.eenews.net)

[>www.eenews.net<](https://www.eenews.net) | [@EENewsUpdates](https://twitter.com/EENewsUpdates)

Greenwire, E&E Daily, E&E News PM, Climatewire, Energywire

From: [Goodwin, Nicholas R](#)
To: [Litterst, Michael D](#)
Subject: RE: [EXTERNAL] Questions on permits for Trump town hall
Date: Thursday, April 30, 2020 10:52:28 AM
Attachments: [image001.png](#)
[image002.png](#)
[image003.png](#)
[image004.png](#)

Did you reply with "The interview is fully compliant with all legal requirements."?

Nicholas Goodwin

Office of the Secretary

Department of the Interior

(202) 412-2249



From: Litterst, Michael D <Mike_Litterst@nps.gov>

Sent: Thursday, April 30, 2020 10:45 AM

To: Goodwin, Nicholas R <nicholas_goodwin@ios.doi.gov>

Subject: Fw: [EXTERNAL] Questions on permits for Trump town hall

See below for what E&E plans to run regarding permits for Sunday. Let me know if there's something else you'd like me to provide him with.

~~~~~

Mike Litterst

Chief of Communications

National Mall and Memorial Parks

Cell: (202) 306-4166

---

**From:** Rob Hotakainen <[rhotakainen@eenews.net](mailto:rhotakainen@eenews.net)>

**Sent:** Thursday, April 30, 2020 10:37 AM

**To:** Litterst, Michael D <[Mike\\_Litterst@nps.gov](mailto:Mike_Litterst@nps.gov)>

**Subject:** Re: [EXTERNAL] Questions

Ok I've got NPS down for no comment on this but will point out that permits have been made public in the past.

**Rob Hotakainen**

National parks, oceans and fisheries reporter

**E&E NEWS**

[rhotakainen@eenews.net](mailto:rhotakainen@eenews.net)

[202-446-0477](tel:202-446-0477)

Twitter: @HotakainenRob

[122 C Street NW, 7th floor, Washington, DC, 20001](#)

[www.eenews.net](http://www.eenews.net) | [@EENewsUpdates](#)

Greenwire, E&E Daily, E&E News PM, Climatewire, Energywire

On Apr 29, 2020, at 4:24 PM, Rob Hotakainen <[rhotakainen@eenews.net](mailto:rhotakainen@eenews.net)> wrote:

Back to you. Let me know if you'll release a copy of the permit as you always have in the past. Thanks, rob

**Rob Hotakainen**

National parks, oceans and fisheries reporter

**E&E NEWS**

[rhotakainen@eenews.net](mailto:rhotakainen@eenews.net)

[202-446-0477](tel:202-446-0477)

Twitter: @HotakainenRob

[122 C Street NW, 7th floor, Washington, DC, 20001](#)

[www.eenews.net](http://www.eenews.net) | [@EENewsUpdates](#)

Greenwire, E&E Daily, E&E News PM, Climatewire, Energywire

Begin forwarded message:

**From:** "Deere, Judd P. EOP/WHO" (b) (6)  
**Date:** April 29, 2020 at 4:21:21 PM EDT  
**To:** Rob Hotakainen <[rhotakainen@eenews.net](mailto:rhotakainen@eenews.net)>  
**Cc:** Michael D Litterst <[mike\\_litterst@nps.gov](mailto:mike_litterst@nps.gov)>  
**Subject:** Re: [EXTERNAL] Questions

Off record— I can't speak to permits. For cost and payment, I'd refer you to Fox News.

Sent from my iPhone

On Apr 29, 2020, at 4:15 PM, Rob Hotakainen  
<[rhotakainen@eenews.net](mailto:rhotakainen@eenews.net)> wrote:

Hi Judd, Mike Litterst steered me your way. Can you fill me in on permit, conditions, cost, who's paying? Thanks much

**Rob Hotakainen**

National parks, oceans and fisheries reporter

**E&E NEWS**

[rhotakainen@eenews.net](mailto:rhotakainen@eenews.net)

[202-446-0477](tel:202-446-0477)

Twitter: @HotakainenRob

[122 C Street NW, 7th floor, Washington, DC, 20001](#)

[www.eenews.net](http://www.eenews.net) | [@EENewsUpdates](#)

Greenwire, E&E Daily, E&E News PM, Climatewire, Energywire

Begin forwarded message:

**From:** "Litterst, Michael D"  
<[Mike\\_Litterst@nps.gov](mailto:Mike_Litterst@nps.gov)>  
**Date:** April 29, 2020 at 3:59:51 PM EDT  
**To:** Rob Hotakainen  
<[rhotakainen@eenews.net](mailto:rhotakainen@eenews.net)>  
**Subject: Re: [EXTERNAL] Questions**

Rob:

It's a White House event; you'll need to check with them for details. Judd Deere is point of contact -

(b) (6)

Mike

~~~~~

Mike Litterst
Chief of Communications
National Mall and Memorial Parks
Cell: (202) 306-4166

From: Rob Hotakainen
<rhotakainen@eenews.net>
Sent: Wednesday, April 29, 2020 3:45 PM
To: Litterst, Michael D
<Mike_Litterst@nps.gov>
Subject: [EXTERNAL] Questions

Hi Mike, can you fill me in on this? Permit required, conditions, who's paying, etc? Thanks and I hope all is well, Rob

NEW YORK – April 29, 2020 — FOX News Channel (FNC) will host a two-hour virtual town hall with President Donald Trump on Sunday, May 3rd from 7-9 PM/ET. Co-moderated by chief political anchor and executive editor of *Special Report*, Bret Baier and anchor and executive editor of *The Story*, Martha MacCallum, the socially-distanced forum entitled ***America Together: Returning to Work***, will take place live from the Lincoln Memorial in Washington D.C., where President Trump will answer viewer-submitted questions from 7:15-8:45 PM/ET.

Rob Hotakainen
National parks, oceans and fisheries reporter
E&E NEWS

rhotakainen@eenews.net

[202-446-0477](tel:202-446-0477)

Twitter: @HotakainenRob

[122 C Street NW, 7th floor, Washington, DC,
20001](#)

[>www.eenews.net<](http://www.eenews.net) | [@EENewsUpdates](#)

Greenwire, E&E Daily, E&E News PM,
Climatewire, Energywire

From: [Litterst, Michael D](#)
To: [Katie Rogers](#)
Subject: Fw: [EXTERNAL] From NPS.gov: Lincoln Memorial Fox News Event
Date: Monday, May 4, 2020 1:26:54 PM

Hi, Katie!

Good to hear from you; it's been awhile!

You can attribute the following statement to me:

"The Lincoln Memorial holds a special place in the hearts of all Americans as one of our nation's revered and iconic national monuments. Since its dedication nearly 100 years ago, the Lincoln Memorial has been used as a backdrop for countless events, demonstrations and speeches by the American people, including numerous presidents. The National Park Service participated in walkthroughs with officials from the White House, Department of the Interior, Fox News and other pertinent federal agencies leading up to Sunday's interview."

Hope this helps and that you're staying well,

Mike

~~~~~

Mike Litterst  
Chief of Communications  
National Mall and Memorial Parks

Cell: (202) 306-4166

---

**From:** Ask NPS, NPS <AskNPS@nps.gov>  
**Sent:** Monday, May 4, 2020 11:46 AM  
**To:** Liming, Katelyn M <Katelyn\_Liming@nps.gov>; News Media, NPS <newsmedia@nps.gov>; Litterst, Michael D <Mike\_Litterst@nps.gov>  
**Subject:** Fw: [EXTERNAL] From NPS.gov: Lincoln Memorial Fox News Event

See below NYT inquiry. Thanks!

Cynthia Hernandez

---

Office of Communications  
National Park Service

---

**From:** no-reply@nps.gov <no-reply@nps.gov>  
**Sent:** Monday, May 4, 2020 11:44 AM  
**To:** Ask NPS, NPS <AskNPS@nps.gov>  
**Subject:** [EXTERNAL] From NPS.gov: Lincoln Memorial Fox News Event

Email submitted from: katie.rogers@nytimes.com at /orgs/1207/contactus.htm

Use katie.rogers@nytimes.com to reply to this message

Category: Information

I'm working on a piece about a Lincoln Memorial event and am doing some reporting on how that particular location was picked for the Fox News interview with President Trump last night. When was the NPS first contacted about this, and which organization initially reached out to start the planning? Has a president ever used the Lincoln Memorial as an interview backdrop before? I sent a message to Mike Litterst but backstopping here in case he's not the right person. Thanks, Katie Rogers White House Correspondent The New York Times 646 584 6589

**From:** [Goodwin, Nicholas R](#)  
**To:** [Interior Press](#)  
**Subject:** RE: [EXTERNAL] ABC News question on Lincoln Memorial event  
**Date:** Tuesday, May 5, 2020 12:13:31 PM  
**Attachments:** [image001.png](#)  
[image002.png](#)  
[image003.png](#)  
[image004.png](#)

---

I will handle.

Nicholas Goodwin  
Office of the Secretary  
Department of the Interior  
(202) 412-2249



---

**From:** Ebbs, Stephanie <Stephanie.Ebbs@abc.com>  
**Sent:** Tuesday, May 5, 2020 12:03 PM  
**To:** Interior Press <interior\_press@ios.doi.gov>  
**Subject:** [EXTERNAL] ABC News question on Lincoln Memorial event

Hey everyone,

I have a few questions to follow up on the event at the Lincoln Memorial on Sunday and the secretary's order to allow that event.

Was the decision to hold an event at the Lincoln Memorial suggested by the White House or the department? Was the event originally planned for the memorial steps and then changed to take place inside?

Why did the secretary's order refer to the event as an "address" when it was scheduled as a "virtual town hall" where the president would be interviewed? Was the secretary aware of Fox News's role in the event?

Does the secretary or the department have any concerns about the political nature of the event?

Thank you

Stephanie Ebbs  
ABC News- Washington  
202-875-4377

**From:** [Goodwin, Nicholas R](#)  
**To:** [Ebbs, Stephanie](#)  
**Cc:** [Interior Press](#)  
**Subject:** RE: [EXTERNAL] ABC News question on Lincoln Memorial event  
**Date:** Tuesday, May 5, 2020 2:32:33 PM  
**Attachments:** [image005.png](#)  
[image006.png](#)  
[image007.png](#)  
[image008.png](#)  
[image009.png](#)  
[image010.png](#)  
[image011.png](#)  
[image012.png](#)

---

Hey Stephanie,

Responses to your questions below. Thanks!

**General statement from NPS (fine to attribute to DOI or me if need be):**

The Lincoln Memorial holds a special place in the hearts of all Americans as one of our nation's revered and iconic national monuments. Since its dedication nearly 100 years ago, the Lincoln Memorial has been used as a backdrop for countless events, demonstrations and speeches by the American people, including numerous presidents. The National Park Service participated in walkthroughs with officials from the White House, Department of the Interior, Fox News and other pertinent federal agencies leading up to Sunday's interview.

The virtual town hall was fully compliant with all legal requirements. In a moment of national unity, President Trump spoke to millions of Americans on television from the Lincoln Memorial, one of the most iconic and unifying symbols in the world, with a message of hope and optimism about the American dream, healing our country, and rebuilding our booming economy so that we are stronger than ever before.

**Q: Was the decision to hold an event at the Lincoln Memorial suggested by the White House or the department? Was the event originally planned for the memorial steps and then changed to take place inside?**

A: As the Secretary stated in the Record of Determination, "the President has, very deliberately, made the decision to address this national crisis at the Lincoln Memorial. . . Such an action will allow the President and the Nation to use Lincoln's powerful presence and the solemnity of the Memorial to reflect on and draw from our Nation's better angels, and to remind all of us that we can knit our often-divided Nation together in a time of trial." There was never a decision to host the town hall on the steps of the Lincoln Memorial.

**Q: Why did the secretary's order refer to the event as an "address" when it was scheduled as a "virtual town hall" where the president would be interviewed? Was the secretary aware of Fox News's role in the event?**

A: The Record of Determination (which is not an "order") refers to the President's addressing, or "speaking directly to," the American people, which occurred through a town hall format involving questions from both citizens and the media hosts.

**Q: Does the secretary or the department have any concerns about the political nature of the event?**

A: It is incorrect to refer to the town hall as having a "political nature." As stated in the Record of Determination, the town hall was "an official message to the American people."

Nicholas Goodwin  
Office of the Secretary  
Department of the Interior  
(202) 412-2249



---

**From:** Ebbs, Stephanie <Stephanie.Ebbs@abc.com>  
**Sent:** Tuesday, May 5, 2020 12:15 PM  
**To:** Goodwin, Nicholas R <nicholas\_goodwin@ios.doi.gov>  
**Subject:** Re: [EXTERNAL] ABC News question on Lincoln Memorial event

EOB today, if you can. I'm on calls for the next hour or two so I'll get back to it after that

Stephanie Ebbs  
202-875-4377

---

**From:** "Goodwin, Nicholas R" <[nicholas\\_goodwin@ios.doi.gov](mailto:nicholas_goodwin@ios.doi.gov)>  
**Date:** Tuesday, May 5, 2020 at 12:13 PM  
**To:** Stephanie Ebbs <[Stephanie.Ebbs@abc.com](mailto:Stephanie.Ebbs@abc.com)>  
**Subject:** RE: [EXTERNAL] ABC News question on Lincoln Memorial event

Hey Stephanie,

What's your deadline?

Nicholas Goodwin  
Office of the Secretary  
Department of the Interior  
(202) 412-2249



---

**From:** Ebbs, Stephanie <[Stephanie.Ebbs@abc.com](mailto:Stephanie.Ebbs@abc.com)>  
**Sent:** Tuesday, May 5, 2020 12:03 PM  
**To:** Interior Press <[interior\\_press@ios.doi.gov](mailto:interior_press@ios.doi.gov)>  
**Subject:** [EXTERNAL] ABC News question on Lincoln Memorial event

Hey everyone,

I have a few questions to follow up on the event at the Lincoln Memorial on Sunday and the

secretary's order to allow that event.

Was the decision to hold an event at the Lincoln Memorial suggested by the White House or the department? Was the event originally planned for the memorial steps and then changed to take place inside?

Why did the secretary's order refer to the event as an "address" when it was scheduled as a "virtual town hall" where the president would be interviewed? Was the secretary aware of Fox News's role in the event?

Does the secretary or the department have any concerns about the political nature of the event?

Thank you

Stephanie Ebbs  
ABC News- Washington  
202-875-4377

**From:** [Deere, Judd P. EOP/WHO](#)  
**To:** [Rachel Frazin](#)  
**Cc:** [Gidley, Hogan H. EOP/WHO](#); [Interior Press](#)  
**Subject:** Re: [EXTERNAL] Re: Chair Grijalva to Trump, Sec. Bernhardt: May 15 Campaign-Style Event at Lincoln Memorial is Inappropriate, Needs to be Canceled  
**Date:** Friday, May 1, 2020 3:42:38 PM  
**Attachments:** [image002.png](#)

---

Off record— this is the first time I'm seeing this inquiry. It's a virtual townhall. How does he think it's campaign related?

Sent from my iPhone

On May 1, 2020, at 3:38 PM, Rachel Frazin <[rfrazin@thehill.com](mailto:rfrazin@thehill.com)> wrote:

Hi all,

I'm hoping to file on this shortly. Should I be expecting a comment?

Thanks,  
Rachel Frazin  
Energy and Environment Reporter, The Hill

On Fri, May 1, 2020 at 1:16 PM Rachel Frazin <[rfrazin@thehill.com](mailto:rfrazin@thehill.com)> wrote:

Hi there,

Rachel with The Hill here. I hope you are doing well.

I was wondering if you might want to respond to this letter criticizing the president's upcoming appearance at the Lincoln Memorial? Are you expecting there to be a crowd at this event?

Thanks,  
Rachel Frazin  
Energy and Environment Reporter, The Hill

----- Forwarded message -----

From: **Sarvana, Adam** <[Adam.Sarvana@mail.house.gov](mailto:Adam.Sarvana@mail.house.gov)>  
Date: Fri, May 1, 2020 at 12:51 PM  
Subject: Chair Grijalva to Trump, Sec. Bernhardt: May 15 Campaign-Style Event at Lincoln Memorial is Inappropriate, Needs to be Canceled  
To:

<image002.png>



**May 1, 2020**

Media Contacts: Adam Sarvana

(202) 225-6065 or (202) 578-6626 mobile

## Chair Grijalva to Trump, Sec. Bernhardt: May 15 Campaign-Style Event at Lincoln Memorial is Inappropriate, Needs to be Canceled

*Washington, D.C.* – Chair Raúl M. Grijalva (D-Ariz.) [wrote](#) to President Trump and Interior Secretary David Bernhardt today urging them to cancel the president’s inappropriate campaign-style rally scheduled for May 15 at the Lincoln Memorial, which is supposedly closed for events [through at least May 15](#) due to the coronavirus pandemic.

“Much like your efforts to keep national parks open and to avoid closing businesses, this sort of ‘leadership’ is out of touch with what Americans want or need,” Grijalva writes. The full letter is available at <https://bit.ly/2SqrVH<>.

Trump announced the event without announcing enforceable social distancing measures, and Grijalva points out that such an event on the National Mall “will encourage a crowd.” Beyond the immediate risk to attendees, Grijalva writes, “At worst, this campaign style event will signal to millions that they no longer need to social distance.”

Trump has come under withering scrutiny in recent days for his incoherent press briefings, unsupported medical claims and inconsistent messaging about his administration’s level of responsibility for responding to a national emergency. Grijalva writes that holding a campaign-style rally in public on federal property, without clear social distancing measures, “only serves to continue this pattern of confusion and misinformation.”

Ultimately, Grijalva points out, the real issue is the president’s role as a national leader: “Using your position as President to flout public health mandates, park closures, and park permitting processes to discuss reopening America is highly inappropriate while case numbers are on the rise here in D.C., in my home state of Arizona, and in towns, counties, and cities across the nation. I assure you, Mr. President, that opening the country too soon is not in America’s best interest, even if you think it is in your political interest.”

The Lincoln Memorial event comes less than a month after the Interior Department, in a widely criticized decision, kept Grand Canyon National Park open until an employee for one of the park’s contractors [contracted COVID-19](#). Chair Grijalva [led the push](#) to close the park in the interest of public health, which Secretary Bernhardt ignored until the risks became too obvious to ignore.

###

Stay in touch with Democrats on the House Natural Resources Committee

[Website](#) – [Facebook](#) – [Twitter](#) – [Newsletter](#)

**From:** [Eisenman, Theresa M](#)  
**To:** [Litterst, Michael D](#); [Interior Press](#)  
**Subject:** RE: [EXTERNAL] Who can use the Lincoln Memorial?  
**Date:** Monday, May 4, 2020 4:00:17 PM

---

Nevermind ... I jumped ahead ... please disregard and go with Nicks' edits.

---

**From:** Eisenman, Theresa M <[theresa\\_eisenman@ios.doi.gov](mailto:theresa_eisenman@ios.doi.gov)>  
**Sent:** Monday, May 4, 2020 4:00 PM  
**To:** Litterst, Michael D <[Mike\\_Litterst@nps.gov](mailto:Mike_Litterst@nps.gov)>; Interior Press <[interior\\_press@ios.doi.gov](mailto:interior_press@ios.doi.gov)>  
**Subject:** RE: [EXTERNAL] Who can use the Lincoln Memorial?

I think the response is good and best coming from you since you handled the first round on the record. Not sure if you worked with SOL on this issue. If so, might run it past them ... otherwise this looks good.

---

**From:** Litterst, Michael D <[Mike\\_Litterst@nps.gov](mailto:Mike_Litterst@nps.gov)>  
**Sent:** Monday, May 4, 2020 3:40 PM  
**To:** Interior Press <[interior\\_press@ios.doi.gov](mailto:interior_press@ios.doi.gov)>  
**Subject:** Fw: [EXTERNAL] Who can use the Lincoln Memorial?

Follow up from *Washingtonian* magazine regarding use of the Lincoln Memorial. Propose the following response. Or since it deals with a Secretarial action, should I refer her to InteriorPress?

"Permits are not being issued for any events until May 16. Anyone seeking to use the memorial before then would need a similar Record of Determination from the Secretary."

Mike

~~~~~

Mike Litterst
Chief of Communications
National Mall and Memorial Parks

Cell: (202) 306-4166

From: Jane Recker <jrecker@washingtonian.com>
Sent: Monday, May 4, 2020 3:09 PM
To: Litterst, Michael D <Mike_Litterst@nps.gov>
Subject: Re: Fw: [EXTERNAL] Who can use the Lincoln Memorial?

Okay, I see though that NPS isn't accepting applications for permits for assembly on the Mall through May 15 though. So, for all intents and purposes, does that mean only the President has the authority

to use the Memorial for the next two weeks? Since NPS isn't accepting applications at the moment, is there anyone else who would even be able to seek use of the Memorial?

Jane Recker

On Mon, May 4, 2020 at 3:00 PM Litterst, Michael D <Mike_Litterst@nps.gov> wrote:

Still on background - anyone can use the steps of the memorial by getting a permit, but a similar ROD would be needed from the Secretary to use the interior.

Mike

~~~~~

Mike Litterst  
Chief of Communications  
National Mall and Memorial Parks

Cell: (202) 306-4166

---

**From:** Jane Recker <[jrecker@washingtonian.com](mailto:jrecker@washingtonian.com)>  
**Sent:** Monday, May 4, 2020 2:55 PM  
**To:** Litterst, Michael D <[Mike\\_Litterst@nps.gov](mailto:Mike_Litterst@nps.gov)>  
**Subject:** Re: Fw: [EXTERNAL] Who can use the Lincoln Memorial?

Hi Mike, thanks for the quick response!

Just want to clarify: does this mean that other individuals would have the capacity to hold a town hall there, but they would need to arrange it through the Secretary of the Interior?

Let me know, thanks!

Jane Recker

On Mon, May 4, 2020 at 2:51 PM Litterst, Michael D <[Mike\\_Litterst@nps.gov](mailto:Mike_Litterst@nps.gov)> wrote:

Hi, Jane:

The following statement is attributable to me:

"The Lincoln Memorial holds a special place in the hearts of all Americans as one of our nation's revered and iconic national monuments. Since its dedication nearly 100 years ago, the Lincoln Memorial has been used as a backdrop for countless events, demonstrations and speeches by the American people, including numerous presidents."

## Background

Per usual policy, a Record of Determination was issued with respect to the closure and securing the area. As described in the [Record of Determination for the temporary closure of portions of the Lincoln Memorial](#): "due to the extraordinary crisis that the American people have endured and the need for the President to exercise a core governmental function to address the Nation about an ongoing public-health crisis," Secretary of the Interior David Bernhardt exercised his authority to facilitate the opportunity for the President to conduct the interview within the Lincoln Memorial.

Hope this helps,

Mike

~~~~~

Mike Litterst
Chief of Communications
National Mall and Memorial Parks

Cell: (202) 306-4166

From: Jane Recker <jrecker@washingtonian.com>
Sent: Monday, May 4, 2020 12:04 PM
To: News Media, NPS <newsmedia@nps.gov>
Subject: [EXTERNAL] Who can use the Lincoln Memorial?

Hello, my name is Jane Recker, I'm a reporter with Washingtonian Magazine.

President Trump held a town hall at the Lincoln Memorial this Sunday. I was just wondering, who is allowed to do this? Would major news outlets, Mayor Bowser, or other important figures be able to hold a town hall from the steps of the Lincoln? Or is this a unique Presidential privilege.

Let me know, thanks so much!

Jane Recker

--

JANE RECKER
Assistant Editor
Washingtonian Media
W. 202.739.2452
jrecker@washingtonian.com
1828 L Street, NW, Suite 200, Washington, DC 20036

[Washingtonian](#) | [Washingtonian Welcome Guide](#)

[Washingtonian Weddings](#) | [Washingtonian Events](#) | [Washingtonian Custom Media](#)

We are a WBENC Certified WBE/WOSB.

--

JANE RECKER

Assistant Editor

Washingtonian Media

W. 202.739.2452

jrecker@washingtonian.com

1828 L Street, NW, Suite 200, Washington, DC 20036

[Washingtonian](#) | [Washingtonian Welcome Guide](#)

[Washingtonian Weddings](#) | [Washingtonian Events](#) | [Washingtonian Custom Media](#)

We are a WBENC Certified WBE/WOSB.

--

JANE RECKER

Assistant Editor

Washingtonian Media

W. 202.739.2452

jrecker@washingtonian.com

1828 L Street, NW, Suite 200, Washington, DC 20036



[Washingtonian](#) | [Washingtonian Welcome Guide](#)

[Washingtonian Weddings](#) | [Washingtonian Events](#) | [Washingtonian Custom Media](#)

We are a WBENC Certified WBE/WOSB.

From: [Goodwin, Nicholas R](#)
To: [Litterst, Michael D](#); [Interior Press](#)
Subject: RE: [EXTERNAL] Who can use the Lincoln Memorial?
Date: Monday, May 4, 2020 3:58:48 PM
Attachments: [image001.png](#)
[image002.png](#)
[image003.png](#)
[image004.png](#)

"Currently, special events and demonstrations are not permitted on the Mall through May 15. Any other type of request would be considered as appropriate on a case by case basis."

Nicholas Goodwin
Office of the Secretary
Department of the Interior
(202) 412-2249



From: Litterst, Michael D <Mike_Litterst@nps.gov>
Sent: Monday, May 4, 2020 3:40 PM
To: Interior Press <interior_press@ios.doi.gov>
Subject: Fw: [EXTERNAL] Who can use the Lincoln Memorial?

Follow up from *Washingtonian* magazine regarding use of the Lincoln Memorial. Propose the following response. Or since it deals with a Secretarial action, should I refer her to InteriorPress?

"Permits are not being issued for any events until May 16. Anyone seeking to use the memorial before then would need a similar Record of Determination from the Secretary."

Mike

~~~~~

Mike Litterst  
Chief of Communications  
National Mall and Memorial Parks

Cell: (202) 306-4166

---

**From:** Jane Recker <[jrecker@washingtonian.com](mailto:jrecker@washingtonian.com)>  
**Sent:** Monday, May 4, 2020 3:09 PM  
**To:** Litterst, Michael D <[Mike\\_Litterst@nps.gov](mailto:Mike_Litterst@nps.gov)>  
**Subject:** Re: Fw: [EXTERNAL] Who can use the Lincoln Memorial?

Okay, I see though that NPS isn't accepting applications for permits for assembly on the Mall through

May 15 though. So, for all intents and purposes, does that mean only the President has the authority to use the Memorial for the next two weeks? Since NPS isn't accepting applications at the moment, is there anyone else who would even be able to seek use of the Memorial?

Jane Recker

On Mon, May 4, 2020 at 3:00 PM Litterst, Michael D <[Mike\\_Litterst@nps.gov](mailto:Mike_Litterst@nps.gov)> wrote:

Still on background - anyone can use the steps of the memorial by getting a permit, but a similar ROD would be needed from the Secretary to use the interior.

Mike

~~~~~

Mike Litterst
Chief of Communications
National Mall and Memorial Parks

Cell: (202) 306-4166

From: Jane Recker <jrecker@washingtonian.com>
Sent: Monday, May 4, 2020 2:55 PM
To: Litterst, Michael D <Mike_Litterst@nps.gov>
Subject: Re: Fw: [EXTERNAL] Who can use the Lincoln Memorial?

Hi Mike, thanks for the quick response!

Just want to clarify: does this mean that other individuals would have the capacity to hold a town hall there, but they would need to arrange it through the Secretary of the Interior?

Let me know, thanks!

Jane Recker

On Mon, May 4, 2020 at 2:51 PM Litterst, Michael D <Mike_Litterst@nps.gov> wrote:

Hi, Jane:

The following statement is attributable to me:

"The Lincoln Memorial holds a special place in the hearts of all Americans as one of our nation's revered and iconic national monuments. Since its dedication nearly 100 years ago, the Lincoln Memorial has been used as a backdrop for countless events,

demonstrations and speeches by the American people, including numerous presidents.”

Background

Per usual policy, a Record of Determination was issued with respect to the closure and securing the area. As described in the [Record of Determination for the temporary closure of portions of the Lincoln Memorial](#): "due to the extraordinary crisis that the American people have endured and the need for the President to exercise a core governmental function to address the Nation about an ongoing public-health crisis," Secretary of the Interior David Bernhardt exercised his authority to facilitate the opportunity for the President to conduct the interview within the Lincoln Memorial.

Hope this helps,

Mike

~~~~~

Mike Litterst  
Chief of Communications  
National Mall and Memorial Parks

Cell: (202) 306-4166

---

**From:** Jane Recker <[jrecker@washingtonian.com](mailto:jrecker@washingtonian.com)>  
**Sent:** Monday, May 4, 2020 12:04 PM  
**To:** News Media, NPS <[newsmedia@nps.gov](mailto:newsmedia@nps.gov)>  
**Subject:** [EXTERNAL] Who can use the Lincoln Memorial?

Hello, my name is Jane Recker, I'm a reporter with Washingtonian Magazine.

President Trump held a town hall at the Lincoln Memorial this Sunday. I was just wondering, who is allowed to do this? Would major news outlets, Mayor Bowser, or other important figures be able to hold a town hall from the steps of the Lincoln? Or is this a unique Presidential privilege.

Let me know, thanks so much!

Jane Recker

--

**JANE RECKER**  
Assistant Editor  
**Washingtonian Media**  
W. 202.739.2452  
[jrecker@washingtonian.com](mailto:jrecker@washingtonian.com)  
1828 L Street, NW, Suite 200, Washington, DC 20036

[Washingtonian](#) | [Washingtonian Welcome Guide](#)  
[Washingtonian Weddings](#) | [Washingtonian Events](#) | [Washingtonian Custom Media](#)  
We are a WBENC Certified WBE/WOSB.

--

**JANE RECKER**

Assistant Editor

**Washingtonian Media**

W. 202.739.2452

[jrecker@washingtonian.com](mailto:jrecker@washingtonian.com)

1828 L Street, NW, Suite 200, Washington, DC 20036

[Washingtonian](#) | [Washingtonian Welcome Guide](#)

[Washingtonian Weddings](#) | [Washingtonian Events](#) | [Washingtonian Custom Media](#)

We are a WBENC Certified WBE/WOSB.

--

**JANE RECKER**

Assistant Editor

**Washingtonian Media**

W. 202.739.2452

[jrecker@washingtonian.com](mailto:jrecker@washingtonian.com)

1828 L Street, NW, Suite 200, Washington, DC 20036



[Washingtonian](#) | [Washingtonian Welcome Guide](#)

[Washingtonian Weddings](#) | [Washingtonian Events](#) | [Washingtonian Custom Media](#)

We are a WBENC Certified WBE/WOSB.

**From:** [Everson, Margaret E](#)  
**To:** [Riddaugh, Andrew M. EOP/WHO](#)  
**Cc:** [Wallace, George R](#)  
**Subject:** Addition to Lincoln interview  
**Date:** Friday, May 1, 2020 7:33:09 PM

---

Andrew,

I hope you are well and things are progressing. Could you please add George (Rob) Wallace, Assistant Secretary for Fish Wildlife and Parks to the credentials list for Sunday. Call me if you need anything, I plan to be onsite early afternoon but happy to come by anytime or field questions as needed.

Thank you

Margaret

**From:** [Everson, OS-Margaret](#)  
**To:** [MacGregor, Katharine S](#); [Zerzan, Gregory P](#); [Wallace, George R](#)  
**Subject:** Lincoln interview  
**Date:** Sunday, May 3, 2020 11:02:29 AM

---

There are no credentials for this evening's interview. You will just need to give your name and show your government ID badge. Please let me know approximately when you will be on site and if you have any problems getting in. Thank you.

Margaret

Get [Outlook for iOS](#)